

RIPK2 Antibody (C-term)
Purified Rabbit Polyclonal Antibody (Pab)
Catalog # AP7818b**Specification**

RIPK2 Antibody (C-term) - Product Information

Application	IHC-P, WB,E
Primary Accession	O43353
Other Accession	NP_003812
Reactivity	Human, Mouse
Host	Rabbit
Clonality	Polyclonal
Isotype	Rabbit IgG
Calculated MW	61195
Antigen Region	458-488

RIPK2 Antibody (C-term) - Additional Information**Gene ID** 8767**Other Names**

Receptor-interacting serine/threonine-protein kinase 2, CARD-containing interleukin-1 beta-converting enzyme-associated kinase, CARD-containing IL-1 beta ICE-kinase, RIP-like-interacting CLARP kinase, Receptor-interacting protein 2, RIP-2, Tyrosine-protein kinase RIPK2, RIPK2, CARDIAK, RICK, RIP2

Target/Specificity

This RIPK2 antibody is generated from rabbits immunized with a KLH conjugated synthetic peptide between 458-488 amino acids from the C-terminal region of human RIPK2.

Dilution

IHC-P~~1:50~100

WB~~1:1000

E~~Use at an assay dependent concentration.

Format

Purified polyclonal antibody supplied in PBS with 0.09% (W/V) sodium azide. This antibody is purified through a protein A column, followed by peptide affinity purification.

Storage

Maintain refrigerated at 2-8°C for up to 2 weeks. For long term storage store at -20°C in small aliquots to prevent freeze-thaw cycles.

Precautions

RIPK2 Antibody (C-term) is for research use only and not for use in diagnostic or therapeutic procedures.

RIPK2 Antibody (C-term) - Protein Information

Name RIPK2 {ECO:0000303|PubMed:30026309, ECO:0000312|HGNC:HGNC:10020}

Function Serine/threonine/tyrosine-protein kinase that plays an essential role in modulation of innate and adaptive immune responses (PubMed:[14638696](#), PubMed:[17054981](#), PubMed:[21123652](#), PubMed:[28656966](#), PubMed:[9575181](#), PubMed:[9642260](#)). Acts as a key effector of NOD1 and NOD2 signaling pathways: upon activation by bacterial peptidoglycans, NOD1 and NOD2 oligomerize and recruit RIPK2 via CARD-CARD domains, leading to the formation of RIPK2 filaments (PubMed:[17054981](#), PubMed:[17562858](#), PubMed:[21123652](#), PubMed:[22607974](#), PubMed:[28656966](#), PubMed:[29452636](#), PubMed:[30026309](#)). Once recruited, RIPK2 autophosphorylates and undergoes 'Lys-63'-linked polyubiquitination by E3 ubiquitin ligases XIAP, BIRC2 and BIRC3, as well as 'Met-1'-linked (linear) polyubiquitination by the LUBAC complex, becoming a scaffolding protein for downstream effectors (PubMed:[22607974](#), PubMed:[28545134](#), PubMed:[29452636](#), PubMed:[30026309](#), PubMed:[30279485](#), PubMed:[30478312](#)). 'Met-1'-linked polyubiquitin chains attached to RIPK2 recruit IKBKG/NEMO, which undergoes 'Lys-63'-linked polyubiquitination in a RIPK2-dependent process (PubMed:[17562858](#), PubMed:[22607974](#), PubMed:[29452636](#), PubMed:[30026309](#)). 'Lys-63'-linked polyubiquitin chains attached to RIPK2 serve as docking sites for TAB2 and TAB3 and mediate the recruitment of MAP3K7/TAK1 to IKBKG/NEMO, inducing subsequent activation of IKBKB/IKK (PubMed:[18079694](#)). In turn, NF-kappa-B is released from NF-kappa-B inhibitors and translocates into the nucleus where it activates the transcription of hundreds of genes involved in immune response, growth control, or protection against apoptosis (PubMed:[18079694](#)). The protein kinase activity is dispensable for the NOD1 and NOD2 signaling pathways (PubMed:[29452636](#), PubMed:[30026309](#)). Contributes to the tyrosine phosphorylation of the guanine exchange factor ARHGEF2 through Src tyrosine kinase leading to NF-kappa-B activation by NOD2 (PubMed:[21887730](#)). Also involved in adaptive immunity: plays a role during engagement of the T-cell receptor (TCR) in promoting BCL10 phosphorylation and subsequent NF-kappa-B activation (PubMed:[14638696](#)). Plays a role in the inactivation of RHOA in response to NGFR signaling (PubMed:[26646181](#)).

Cellular Location

Cytoplasm. Cell membrane; Peripheral membrane protein. Endoplasmic reticulum. Note=Recruited to the cell membrane by NOD2 following stimulation by bacterial peptidoglycans

Tissue Location

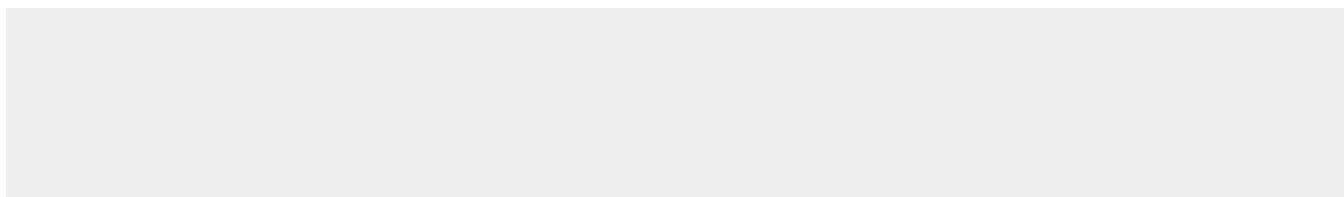
Detected in heart, brain, placenta, lung, peripheral blood leukocytes, spleen, kidney, testis, prostate, pancreas and lymph node.

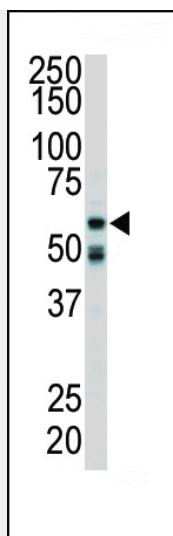
RIPK2 Antibody (C-term) - Protocols

Provided below are standard protocols that you may find useful for product applications.

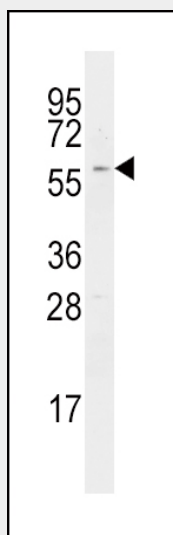
- [Western Blot](#)
- [Blocking Peptides](#)
- [Dot Blot](#)
- [Immunohistochemistry](#)
- [Immunofluorescence](#)
- [Immunoprecipitation](#)
- [Flow Cytometry](#)
- [Cell Culture](#)

RIPK2 Antibody (C-term) - Images

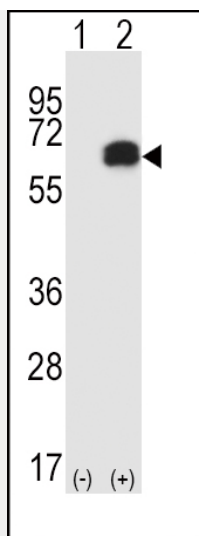




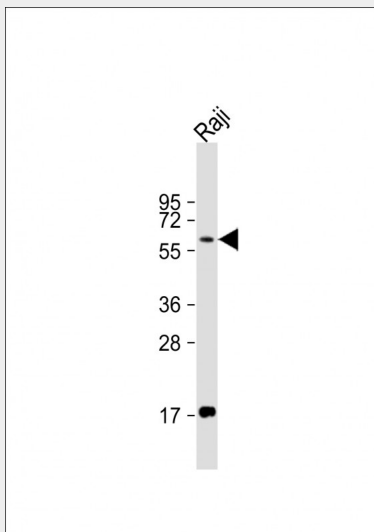
Western blot analysis of anti-RIPK2 Pab (Cat. #AP7818b) in mouse cerebellum tissue lysate. RIPK2 (arrow) was detected using purified Pab. Secondary HRP-anti-rabbit was used for signal visualization with chemiluminescence.



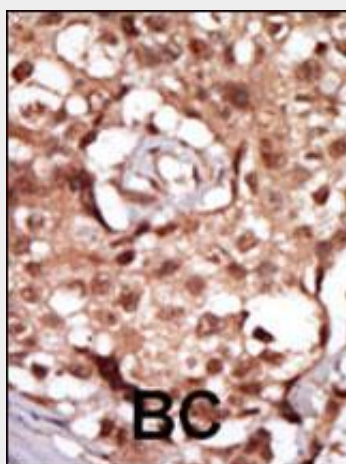
Western blot analysis of anti-RIPK2 Pab (Cat. #AP7818b) in Ramos cell line lysates (35ug/lane). RIPK2 (arrow) was detected using the purified Pab.



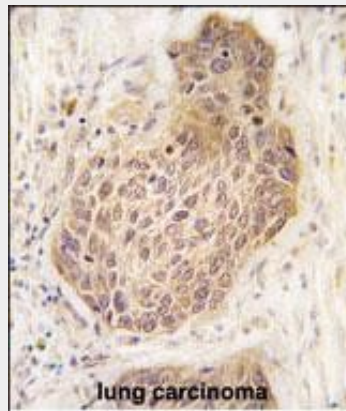
Western blot analysis of RIPK2 (arrow) using rabbit polyclonal RIPK2 Antibody (D474) (Cat.#AP7818b). 293 cell lysates (2 ug/lane) either nontransfected (Lane 1) or transiently transfected (Lane 2) with the RIPK2 gene.



Anti-RIPK2 Antibody (D474) at 1:1000 dilution + Raji whole cell lysate Lysates/proteins at 20 µg per lane. Secondary Goat Anti-Rabbit IgG, (H+L), Peroxidase conjugated at 1/10000 dilution. Predicted band size : 61 kDa Blocking/Dilution buffer: 5% NFDm/TBST.



Formalin-fixed and paraffin-embedded human cancer tissue reacted with the primary antibody, which was peroxidase-conjugated to the secondary antibody, followed by AEC staining. This data demonstrates the use of this antibody for immunohistochemistry; clinical relevance has not been evaluated. BC = breast carcinoma; HC = hepatocarcinoma.



Formalin-fixed and paraffin-embedded human lung carcinoma tissue reacted with RIPK2 Antibody (C-term) (Cat.#AP7818b), which was peroxidase-conjugated to the secondary antibody, followed by DAB staining. This data demonstrates the use of this antibody for immunohistochemistry; clinical relevance has not been evaluated.

RIPK2 Antibody (C-term) - Background

RIPK2 is a member of the receptor-interacting protein (RIP) family of serine/threonine protein kinases. The encoded protein contains a C-terminal recruitment domain (CARD), and is a component of signaling complexes in both the innate and adaptive immune pathways. It is a potent activator of NF-kappaB and inducer of apoptosis in response to various stimuli.

RIPK2 Antibody (C-term) - References

Clark, H.F., et al., Genome Res. 13(10):2265-2270 (2003).
Stehlik, C., et al., J. Biol. Chem. 278(34):31941-31949 (2003).
Chen, Y.R., et al., Biochemistry 42(20):6310-6320 (2003).
Munz, B., et al., Mol. Cell. Biol. 22(16):5879-5886 (2002).
Chin, A.I., et al., Nature 416(6877):190-194 (2002).