

**TESK2 Antibody (Center C225)**  
**Purified Rabbit Polyclonal Antibody (Pab)**  
**Catalog # AP7821f****Specification**

---

**TESK2 Antibody (Center C225) - Product Information**

Application	IHC-P, WB,E
Primary Accession	<a href="#">O96S53</a>
Other Accession	<a href="#">O924U5</a> , <a href="#">O8VCT9</a>
Reactivity	Human
Predicted	Mouse, Rat
Host	Rabbit
Clonality	Polyclonal
Isotype	Rabbit IgG
Calculated MW	63639
Antigen Region	210-240

**TESK2 Antibody (Center C225) - Additional Information****Gene ID** 10420**Other Names**

Dual specificity testis-specific protein kinase 2, Testicular protein kinase 2, TESK2

**Target/Specificity**

This TESK2 antibody is generated from rabbits immunized with a KLH conjugated synthetic peptide between 210-240 amino acids from the Central region of human TESK2.

**Dilution**

IHC-P~~1:10~50

WB~~1:500

E~~Use at an assay dependent concentration.

**Format**

Purified polyclonal antibody supplied in PBS with 0.09% (W/V) sodium azide. This antibody is prepared by Saturated Ammonium Sulfate (SAS) precipitation followed by dialysis against PBS.

**Storage**

Maintain refrigerated at 2-8°C for up to 2 weeks. For long term storage store at -20°C in small aliquots to prevent freeze-thaw cycles.

**Precautions**

TESK2 Antibody (Center C225) is for research use only and not for use in diagnostic or therapeutic procedures.

**TESK2 Antibody (Center C225) - Protein Information****Name** TESK2

**Function** Dual specificity protein kinase activity catalyzing autophosphorylation and phosphorylation of exogenous substrates on both serine/threonine and tyrosine residues. Phosphorylates cofilin at 'Ser- 3'. May play an important role in spermatogenesis.

**Cellular Location**

Nucleus.

**Tissue Location**

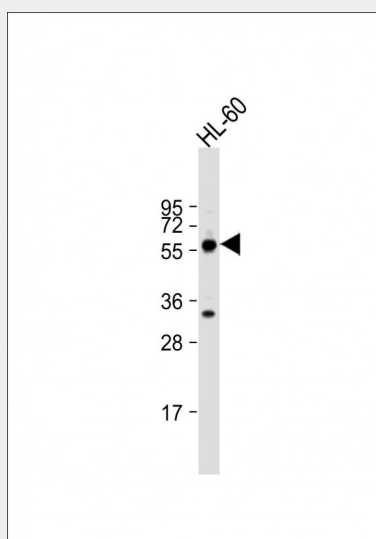
Predominantly expressed in testis and prostate. Found predominantly in non-germinal Sertoli cells

**TESK2 Antibody (Center C225) - Protocols**

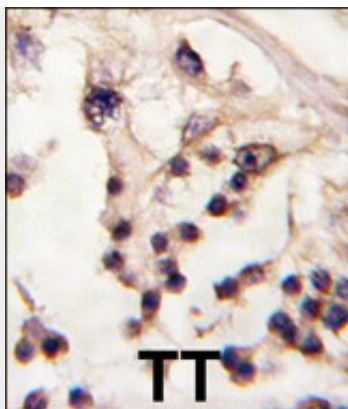
Provided below are standard protocols that you may find useful for product applications.

- [Western Blot](#)
- [Blocking Peptides](#)
- [Dot Blot](#)
- [Immunohistochemistry](#)
- [Immunofluorescence](#)
- [Immunoprecipitation](#)
- [Flow Cytometry](#)
- [Cell Culture](#)

**TESK2 Antibody (Center C225) - Images**



Anti-TESK2 Antibody (Center) at 1:500 dilution + HL-60 whole cell lysate Lysates/proteins at 20 µg per lane. Secondary Goat Anti-Rabbit IgG, (H+L), Peroxidase conjugated at 1/10000 dilution. Predicted band size : 64 kDa Blocking/Dilution buffer: 5% NFDM/TBST.



Formalin-fixed and paraffin-embedded human testis tissue reacted with TESK2 antibody (Center)(Cat.#AP7812f), which was peroxidase-conjugated to the secondary antibody, followed by DAB staining. This data demonstrates the use of this antibody for immunohistochemistry; clinical relevance has not been evaluated.

#### **TESK2 Antibody (Center C225) - Background**

TESK2 is a dual specificity protein kinase activity catalyzing autophosphorylation and phosphorylation of exogenous substrates on both serine/threonine and tyrosine residues. TESK2 phosphorylates cofilin at Ser-3. It may play an important role in spermatogenesis. This nuclear enzyme is thought to be activated by autophosphorylation on Ser-219. Expression is predominantly in testis and prostate, with highest concentrations in nongerminal Sertoli cells.

#### **TESK2 Antibody (Center C225) - References**

Toshima,J.,J. Biol. Chem. 276 (33), 31449-31458 (2001)  
Rosok,O., Genomics 61 (1), 44-54 (1999)