

SARS2 Antibody (Center)
Purified Rabbit Polyclonal Antibody (Pab)
Catalog # AP7837c**Specification**

SARS2 Antibody (Center) - Product Information

| | |
|-------------------|------------------------|
| Application | WB, IHC-P,E |
| Primary Accession | Q9NP81 |
| Reactivity | Human |
| Host | Rabbit |
| Clonality | Polyclonal |
| Isotype | Rabbit IgG |
| Calculated MW | 58283 |
| Antigen Region | 315-344 |

SARS2 Antibody (Center) - Additional Information**Gene ID** 54938**Other Names**

Serine--tRNA ligase, mitochondrial, SerRSmt, Seryl-tRNA synthetase, SerRS, Seryl-tRNA(Ser/Sec) synthetase, SARS2, SARSM

Target/Specificity

This SARS2 antibody is generated from rabbits immunized with a KLH conjugated synthetic peptide between 315-344 amino acids from the Central region of human SARS2.

Dilution

WB~~1:1000

IHC-P~~1:10~50

E~~Use at an assay dependent concentration.

Format

Purified polyclonal antibody supplied in PBS with 0.09% (W/V) sodium azide. This antibody is prepared by Saturated Ammonium Sulfate (SAS) precipitation followed by dialysis against PBS.

Storage

Maintain refrigerated at 2-8°C for up to 2 weeks. For long term storage store at -20°C in small aliquots to prevent freeze-thaw cycles.

Precautions

SARS2 Antibody (Center) is for research use only and not for use in diagnostic or therapeutic procedures.

SARS2 Antibody (Center) - Protein Information**Name** SARS2

Synonyms SARSM

Function Catalyzes the attachment of serine to tRNA(Ser). Is also probably able to aminoacylate tRNA(Sec) with serine, to form the misacylated tRNA L-seryl-tRNA(Sec), which will be further converted into selenocysteiny-tRNA(Sec).

Cellular Location

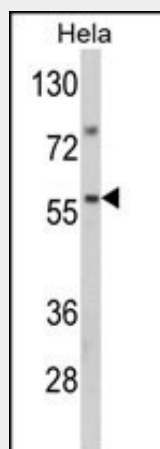
Mitochondrion matrix {ECO:0000250|UniProtKB:Q9N0F3}

SARS2 Antibody (Center) - Protocols

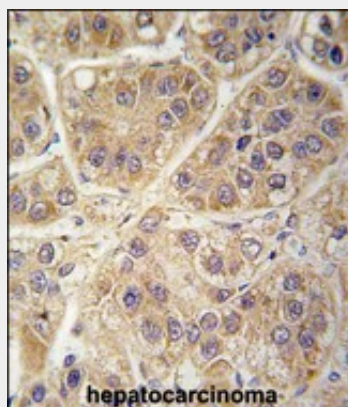
Provided below are standard protocols that you may find useful for product applications.

- [Western Blot](#)
- [Blocking Peptides](#)
- [Dot Blot](#)
- [Immunohistochemistry](#)
- [Immunofluorescence](#)
- [Immunoprecipitation](#)
- [Flow Cytometry](#)
- [Cell Culture](#)

SARS2 Antibody (Center) - Images



Western blot analysis of SARS2 Antibody (Center) (Cat. #AP7837c) in HeLa cell line lysates (35ug/lane). SARS2 (arrow) was detected using the purified Pab.



Formalin-fixed and paraffin-embedded human hepatocarcinoma tissue reacted with SARS2 antibody (Center) (Cat.#AP7837c), which was peroxidase-conjugated to the secondary antibody, followed by DAB staining. This data demonstrates the use of this antibody for immunohistochemistry; clinical relevance has not been evaluated.

SARS2 Antibody (Center) - Background

SARS2 catalyzes the attachment of serine to tRNA(Ser). It is also able to aminoacylate tRNA(Sec) with serine, to form the misacylated tRNA L-seryl-tRNA(Sec), which will be further converted into selenocysteinyI-tRNA(Sec).

SARS2 Antibody (Center) - References

- Muller,T., Acta Neuropathol. 110 (4), 426-430 (2005)
Gibbons,W.J. Jr., Biochem. Biophys. Res. Commun. 317 (3), 774-778 (2004)
Yokogawa,T., J. Biol. Chem. 275 (26), 19913-19920 (2000)