

ALDH1L1 Antibody (C-term)
Purified Rabbit Polyclonal Antibody (Pab)
Catalog # AP7848B**Specification**

ALDH1L1 Antibody (C-term) - Product Information

Application	IHC-P, WB,E
Primary Accession	O75891
Reactivity	Human, Mouse
Host	Rabbit
Clonality	Polyclonal
Isotype	Rabbit IgG
Calculated MW	98829
Antigen Region	717-746

ALDH1L1 Antibody (C-term) - Additional Information**Gene ID** 10840**Other Names**

Cytosolic 10-formyltetrahydrofolate dehydrogenase, 10-FTHFDH, FDH, Aldehyde dehydrogenase family 1 member L1, ALDH1L1, FTHFD

Target/Specificity

This ALDH1L1 antibody is generated from rabbits immunized with a KLH conjugated synthetic peptide between 717-746 amino acids from the C-terminal region of human ALDH1L1.

Dilution

IHC-P~~1:10~50

WB~~1:1000

E~~Use at an assay dependent concentration.

Format

Purified polyclonal antibody supplied in PBS with 0.09% (W/V) sodium azide. This antibody is prepared by Saturated Ammonium Sulfate (SAS) precipitation followed by dialysis against PBS.

Storage

Maintain refrigerated at 2-8°C for up to 2 weeks. For long term storage store at -20°C in small aliquots to prevent freeze-thaw cycles.

Precautions

ALDH1L1 Antibody (C-term) is for research use only and not for use in diagnostic or therapeutic procedures.

ALDH1L1 Antibody (C-term) - Protein Information**Name** ALDH1L1 ([HGNC:3978](#))

Synonyms FTHFD

Function Cytosolic 10-formyltetrahydrofolate dehydrogenase that catalyzes the NADP(+)-dependent conversion of 10-formyltetrahydrofolate to tetrahydrofolate and carbon dioxide (PubMed:[19933275](#), PubMed:[21238436](#)). May also have an NADP(+)-dependent aldehyde dehydrogenase activity towards formaldehyde, acetaldehyde, propionaldehyde, and benzaldehyde (By similarity).

Cellular Location

Cytoplasm, cytosol.

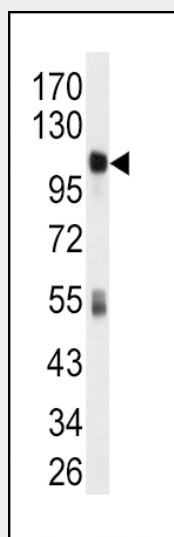
Tissue Location

Highly expressed in liver, pancreas and kidney.

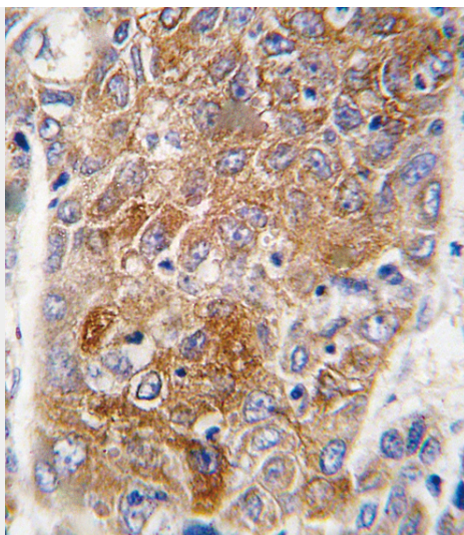
ALDH1L1 Antibody (C-term) - Protocols

Provided below are standard protocols that you may find useful for product applications.

- [Western Blot](#)
- [Blocking Peptides](#)
- [Dot Blot](#)
- [Immunohistochemistry](#)
- [Immunofluorescence](#)
- [Immunoprecipitation](#)
- [Flow Cytometry](#)
- [Cell Culture](#)

ALDH1L1 Antibody (C-term) - Images

Western blot analysis of anti-ALDH1L1 Antibody (C-term) (Cat.#AP7848b) in mouse liver tissue lysates (35ug/lane). ALDH1L1 (arrow) was detected using the purified Pab.



Formalin-fixed and paraffin-embedded human hepatocarcinoma tissue reacted with ALDH1L1 antibody (C-term), which was peroxidase-conjugated to the secondary antibody, followed by DAB staining. This data demonstrates the use of this antibody for immunohistochemistry; clinical relevance has not been evaluated.

ALDH1L1 Antibody (C-term) - Background

ALDH1L1 catalyzes the conversion of 10-formyltetrahydrofolate, NADP, and water to tetrahydrofolate, NADPH, and carbon dioxide. The encoded protein belongs to the aldehyde dehydrogenase family and is responsible for formate oxidation in vivo. Deficiencies in this gene can result in an accumulation of formate and subsequent methanol poisoning.

ALDH1L1 Antibody (C-term) - References

Hosgood, H.D. III, Carcinogenesis 29 (10), 1938-1943 (2008)
Lee, K.M., Hum. Genet. 122 (5), 525-533 (2007)