

FKBP1B Antibody (N-term E6)
Purified Rabbit Polyclonal Antibody (Pab)
Catalog # AP7868a**Specification**

FKBP1B Antibody (N-term E6) - Product Information

Application	IF, WB,E
Primary Accession	P68106
Other Accession	P97534 , Q8HYX6 , Q9Z2I2 , P68107 , P62943 , P26883 , P62942 , P18203
Reactivity	Human, Mouse
Predicted	Bovine, Rabbit, Rat
Host	Rabbit
Clonality	Polyclonal
Isotype	Rabbit IgG
Calculated MW	11783
Antigen Region	1-30

FKBP1B Antibody (N-term E6) - Additional Information**Gene ID** 2281**Other Names**

Peptidyl-prolyl cis-trans isomerase FKBP1B, PPIase FKBP1B, 126 kDa FK506-binding protein, 126 kDa FKBP, FKBP-126, FK506-binding protein 1B, FKBP-1B, Immunophilin FKBP126, Rotamase, h-FKBP-12, FKBP1B, FKBP126, FKBP1L, FKBP9, OTK4

Target/Specificity

This FKBP1B antibody is generated from rabbits immunized with a KLH conjugated synthetic peptide between 1-30 amino acids from the N-terminal region of human FKBP1B.

Dilution

IF~~1:10~50

WB~~1:1000

E~~Use at an assay dependent concentration.

Format

Purified polyclonal antibody supplied in PBS with 0.09% (W/V) sodium azide. This antibody is prepared by Saturated Ammonium Sulfate (SAS) precipitation followed by dialysis against PBS.

Storage

Maintain refrigerated at 2-8°C for up to 2 weeks. For long term storage store at -20°C in small aliquots to prevent freeze-thaw cycles.

Precautions

FKBP1B Antibody (N-term E6) is for research use only and not for use in diagnostic or therapeutic procedures.

FKBP1B Antibody (N-term E6) - Protein Information

Name FKBP1B ([HGNC:3712](#))

Function Has the potential to contribute to the immunosuppressive and toxic effects of FK506 and rapamycin. PPlases accelerate the folding of proteins. It catalyzes the cis-trans isomerization of proline imidic peptide bonds in oligopeptides.

Cellular Location

Cytoplasm. Sarcoplasmic reticulum

Tissue Location

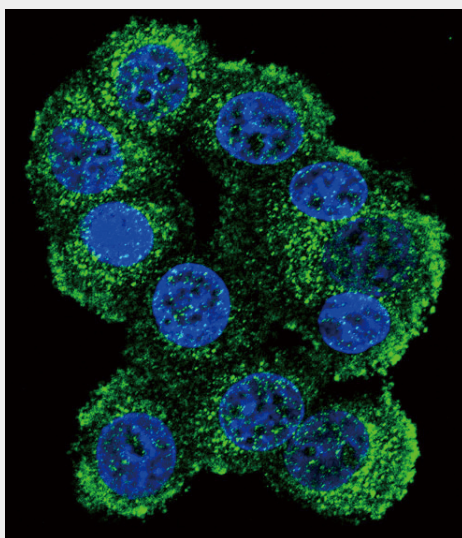
Detected in heart muscle (at protein level). Isoform 1 and isoform 2 are ubiquitous with highest levels in brain and thymus.

FKBP1B Antibody (N-term E6) - Protocols

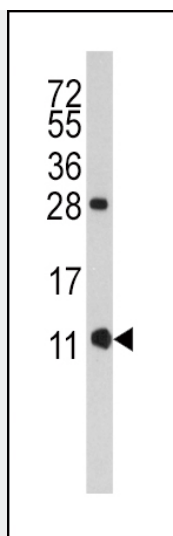
Provided below are standard protocols that you may find useful for product applications.

- [Western Blot](#)
- [Blocking Peptides](#)
- [Dot Blot](#)
- [Immunohistochemistry](#)
- [Immunofluorescence](#)
- [Immunoprecipitation](#)
- [Flow Cytometry](#)
- [Cell Culture](#)

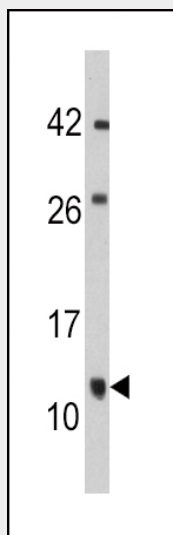
FKBP1B Antibody (N-term E6) - Images



Confocal immunofluorescent analysis of FKBP1B Antibody (N-term E6)(Cat#AP7868a) with 293 cell followed by Alexa Fluor 488-conjugated goat anti-rabbit IgG (green). DAPI was used to stain the cell nuclear (blue).



Western blot analysis of anti-FKBP1B Antibody (N-term E6) (Cat.#AP7868a) in CEM cell line lysates (35ug/lane). FKBP1B (arrow) was detected using the purified Pab.



Western blot analysis of anti-FKBP1B Antibody (N-term E6) (Cat.#AP7868a) in mouse cerebellum tissue lysates (35ug/lane). FKBP1B (arrow) was detected using the purified Pab.

FKBP1B Antibody (N-term E6) - Background

FKBP1B is a member of the immunophilin protein family, which play a role in immunoregulation and basic cellular processes involving protein folding and trafficking. This protein is a cis-trans prolyl isomerase that binds the immunosuppressants FK506 and rapamycin. The protein is highly similar to the FK506-binding protein 1A. Its physiological role is thought to be in excitation-contraction coupling in cardiac muscle.

FKBP1B Antibody (N-term E6) - References

Arakawa H., Nagase H. Biochem. Biophys. Res. Commun. 200:836-843(1994)
Lam E., Martin M.M., Timmerman A.P. Biol. Chem. 270:26511-26522(1995)
Deivanayagam C.C., Carson M. Acta Crystallogr. D 56:266-271(2000)