

**AMPD3 Antibody (Center)**  
**Purified Rabbit Polyclonal Antibody (Pab)**  
**Catalog # AP7869c****Specification**

---

**AMPD3 Antibody (Center) - Product Information**

Application	WB,E
Primary Accession	<a href="#">Q01432</a>
Reactivity	Human, Mouse
Host	Rabbit
Clonality	Polyclonal
Isotype	Rabbit IgG
Antigen Region	325-356

**AMPD3 Antibody (Center) - Additional Information****Gene ID** 272**Other Names**

AMP deaminase 3, AMP deaminase isoform E, Erythrocyte AMP deaminase, AMPD3

**Target/Specificity**

This AMPD3 antibody is generated from rabbits immunized with a KLH conjugated synthetic peptide between 325-356 amino acids from the Central region of human AMPD3.

**Dilution**

WB~~1:1000

E~~Use at an assay dependent concentration.

**Format**

Purified polyclonal antibody supplied in PBS with 0.09% (W/V) sodium azide. This antibody is purified through a protein A column, followed by peptide affinity purification.

**Storage**

Maintain refrigerated at 2-8°C for up to 2 weeks. For long term storage store at -20°C in small aliquots to prevent freeze-thaw cycles.

**Precautions**

AMPD3 Antibody (Center) is for research use only and not for use in diagnostic or therapeutic procedures.

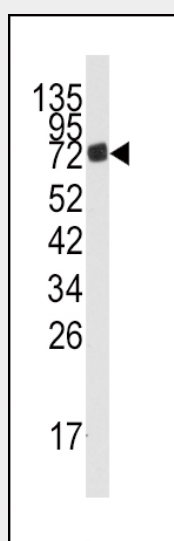
**AMPD3 Antibody (Center) - Protein Information****Name** AMPD3 ([HGNC:470](#))**Function** AMP deaminase plays a critical role in energy metabolism.

## AMPD3 Antibody (Center) - Protocols

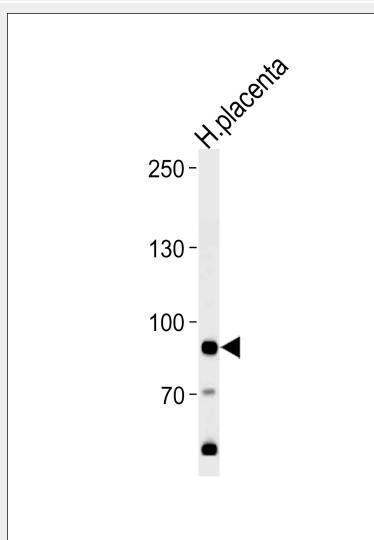
Provided below are standard protocols that you may find useful for product applications.

- [Western Blot](#)
- [Blocking Peptides](#)
- [Dot Blot](#)
- [Immunohistochemistry](#)
- [Immunofluorescence](#)
- [Immunoprecipitation](#)
- [Flow Cytometry](#)
- [Cell Culture](#)

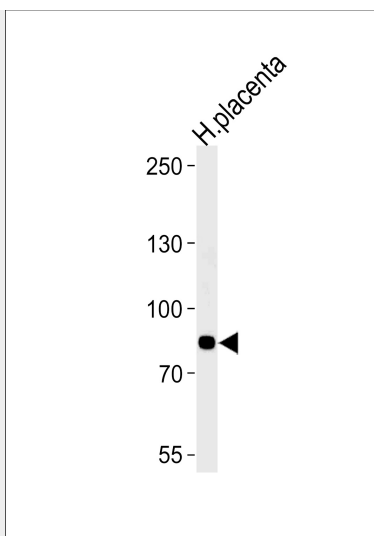
## AMPD3 Antibody (Center) - Images



Western blot analysis of anti-AMPD3 Antibody (Center) (Cat.#AP7869c) in mouse lung tissue lysates (35ug/lane). AMPD3 (arrow) was detected using the purified Pab.



AMPD3 Antibody (Center) (Cat.# AP7869c) western blot analysis in human placenta tissue lysates (35ug/lane). This demonstrates the AMPD3 antibody detected the AMPD3 protein (arrow).



AMPD3 Antibody (Center) (Cat.# AP7869c) western blot analysis in human placenta tissue lysate (35ug/lane). This demonstrates that the AMPD3 antibody detected AMPD3 protein (arrow).

#### **AMPD3 Antibody (Center) - Background**

AMPD3 is a member of the AMP deaminase gene family. This protein is a highly regulated enzyme that catalyzes the hydrolytic deamination of adenosine monophosphate to inosine monophosphate, a branch point in the adenylate catabolic pathway. The protein is the erythrocyte (E) isoforms, whereas other family members isoforms predominate in muscle (M) and liver (L) cells. Mutations in this gene lead to the clinically asymptomatic, autosomal recessive condition erythrocyte AMP deaminase deficiency.

#### **AMPD3 Antibody (Center) - References**

Mahnke-Zizelman D.K., Eddy R. Biochim. Biophys. Acta 1306:75-92(1996)  
Yamada Y., Goto H., Wakamatsu N., Ogasawara N. Hum. Mutat. 17:78-78(2001)