

ESRRG Antibody (Center)
Purified Rabbit Polyclonal Antibody (Pab)
Catalog # AP7870c**Specification**

ESRRG Antibody (Center) - Product Information

Application	WB,E
Primary Accession	P62508
Other Accession	P62510 , P62509
Reactivity	Human
Predicted	Mouse, Rat
Host	Rabbit
Clonality	Polyclonal
Isotype	Rabbit IgG
Calculated MW	51306
Antigen Region	189-221

ESRRG Antibody (Center) - Additional Information**Gene ID** 2104**Other Names**

Estrogen-related receptor gamma, ERR gamma-2, Estrogen receptor-related protein 3, Nuclear receptor subfamily 3 group B member 3, ESRRG, ERR3, ERRG2, KIAA0832, NR3B3

Target/Specificity

This ESRRG antibody is generated from rabbits immunized with a KLH conjugated synthetic peptide between 189-221 amino acids from the Central region of human ESRRG.

Dilution

WB~~1:500-1:1000

E~~Use at an assay dependent concentration.

Format

Purified polyclonal antibody supplied in PBS with 0.09% (W/V) sodium azide. This antibody is prepared by Saturated Ammonium Sulfate (SAS) precipitation followed by dialysis against PBS.

Storage

Maintain refrigerated at 2-8°C for up to 2 weeks. For long term storage store at -20°C in small aliquots to prevent freeze-thaw cycles.

Precautions

ESRRG Antibody (Center) is for research use only and not for use in diagnostic or therapeutic procedures.

ESRRG Antibody (Center) - Protein Information**Name** ESRRG

Synonyms ERR3, ERRG2, KIAA0832, NR3B3

Function Orphan receptor that acts as a transcription activator in the absence of bound ligand. Binds specifically to an estrogen response element and activates reporter genes controlled by estrogen response elements (By similarity). Induces the expression of PERM1 in the skeletal muscle.

Cellular Location

Nucleus.

Tissue Location

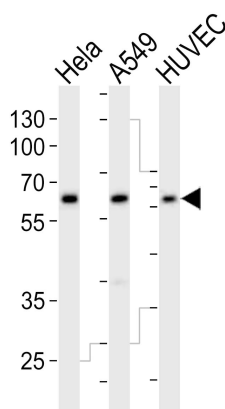
Expressed in the heart, kidney, brain, lung, bone marrow, adrenal gland, trachea, spinal cord and thyroid gland

ESRRG Antibody (Center) - Protocols

Provided below are standard protocols that you may find useful for product applications.

- [Western Blot](#)
- [Blocking Peptides](#)
- [Dot Blot](#)
- [Immunohistochemistry](#)
- [Immunofluorescence](#)
- [Immunoprecipitation](#)
- [Flow Cytometry](#)
- [Cell Culture](#)

ESRRG Antibody (Center) - Images



Western blot analysis of lysates from HeLa, A549, HUVEC cell line (from left to right), using ESRRG Antibody (Center)(Cat. #AP7870c). AP7870c was diluted at 1:1000 at each lane. A goat anti-rabbit IgG H&L(HRP) at 1:10000 dilution was used as the secondary antibody. Lysates at 20ug per lane.

ESRRG Antibody (Center) - Background

ESRRG is an orphan receptor that acts as transcription activator in the absence of bound ligand. This protein binds specifically to an estrogen response element and activates reporter genes

controlled by estrogen response elements.

ESRRG Antibody (Center) - References

Chen F., Zhang Q., McDonald T. Gene 228:101-109(1999)

Heard D.J., Norby P.L. Mol. Endocrinol. 14:382-392(2000)

Hong H., Yang L., Stallcup M.R.J. Biol. Chem. 274:22618-22626(1999)