

**GMFG Antibody (C-term)**  
**Purified Rabbit Polyclonal Antibody (Pab)**  
**Catalog # AP7871b****Specification**

---

**GMFG Antibody (C-term) - Product Information**

Application	IHC-P, WB,E
Primary Accession	<a href="#">O60234</a>
Other Accession	<a href="#">Q9ERL7</a> , <a href="#">Q56JZ9</a>
Reactivity	Human
Predicted	Bovine, Mouse
Host	Rabbit
Clonality	Polyclonal
Isotype	Rabbit IgG
Calculated MW	16801
Antigen Region	101-131

**GMFG Antibody (C-term) - Additional Information****Gene ID** 9535**Other Names**

Glia maturation factor gamma, GMF-gamma, GMFG

**Target/Specificity**

This GMFG antibody is generated from rabbits immunized with a KLH conjugated synthetic peptide between 101-131 amino acids from the C-terminal region of human GMFG.

**Dilution**

IHC-P~~1:50~100

WB~~1:1000

E~~Use at an assay dependent concentration.

**Format**

Purified polyclonal antibody supplied in PBS with 0.09% (W/V) sodium azide. This antibody is prepared by Saturated Ammonium Sulfate (SAS) precipitation followed by dialysis against PBS.

**Storage**

Maintain refrigerated at 2-8°C for up to 2 weeks. For long term storage store at -20°C in small aliquots to prevent freeze-thaw cycles.

**Precautions**

GMFG Antibody (C-term) is for research use only and not for use in diagnostic or therapeutic procedures.

**GMFG Antibody (C-term) - Protein Information****Name** GMFG

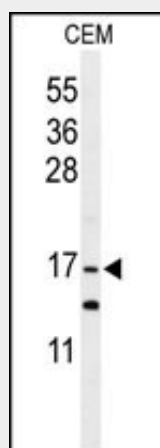
**Tissue Location**

Expressed predominantly in lung, heart and placenta

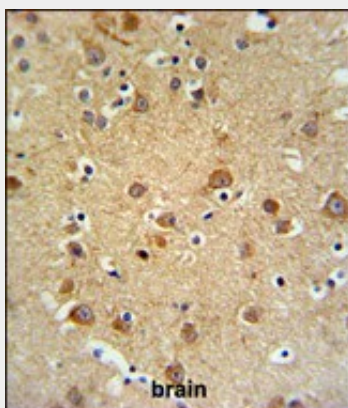
**GMFG Antibody (C-term) - Protocols**

Provided below are standard protocols that you may find useful for product applications.

- [Western Blot](#)
- [Blocking Peptides](#)
- [Dot Blot](#)
- [Immunohistochemistry](#)
- [Immunofluorescence](#)
- [Immunoprecipitation](#)
- [Flow Cytometry](#)
- [Cell Culture](#)

**GMFG Antibody (C-term) - Images**

Western blot analysis of GMFG Antibody (C-term) (Cat. #AP7871b) in CEM cell line lysates (35ug/lane). GMFG (arrow) was detected using the purified Pab.



GMFG Antibody (C-term) (Cat. #AP7871b) IHC analysis in formalin fixed and paraffin embedded brain tissue followed by peroxidase conjugation of the secondary antibody and DAB staining. This data demonstrates the use of the GMFG Antibody (C-term) for immunohistochemistry. Clinical relevance has not been evaluated.

**GMFG Antibody (C-term) - Background**

Glia maturation factor gamma (GMFG) is a cytokine-responsive protein in erythropoietin-induced and granulocyte-colony stimulating factor-induced hematopoietic lineage development. It may be involved in glial differentiation, neural regeneration, and inhibition of tumor cell proliferation.

#### **GMFG Antibody (C-term) - References**

Shi,Y., Genomics Proteomics Bioinformatics 4 (3), 145-155 (2006)  
Kawai,Y., Biochim. Biophys. Acta 1625 (3), 246-252 (2003)  
Peters,N., Neurogenetics 2 (3), 163-166 (1999)