

CYP21A2 Antibody (N-term)
Purified Rabbit Polyclonal Antibody (Pab)
Catalog # AP7880a**Specification**

CYP21A2 Antibody (N-term) - Product Information

Application	WB,E
Primary Accession	P08686
Reactivity	Human
Host	Rabbit
Clonality	Polyclonal
Isotype	Rabbit IgG
Calculated MW	56001
Antigen Region	59-87

CYP21A2 Antibody (N-term) - Additional Information**Gene ID** 1589**Other Names**

Steroid 21-hydroxylase, 21-OHase, Cytochrome P-450c21, Cytochrome P450 21, Cytochrome P450 XXI, Cytochrome P450-C21, Cytochrome P450-C21B, CYP21A2, CYP21, CYP21B

Target/Specificity

This CYP21A2 antibody is generated from rabbits immunized with a KLH conjugated synthetic peptide between 59-87 amino acids from the N-terminal region of human CYP21A2.

Dilution

WB~~1:1000

E~~Use at an assay dependent concentration.

Format

Purified polyclonal antibody supplied in PBS with 0.09% (W/V) sodium azide. This antibody is prepared by Saturated Ammonium Sulfate (SAS) precipitation followed by dialysis against PBS.

Storage

Maintain refrigerated at 2-8°C for up to 2 weeks. For long term storage store at -20°C in small aliquots to prevent freeze-thaw cycles.

Precautions

CYP21A2 Antibody (N-term) is for research use only and not for use in diagnostic or therapeutic procedures.

CYP21A2 Antibody (N-term) - Protein Information**Name** CYP21A2**Synonyms** CYP21, CYP21B

Function A cytochrome P450 monooxygenase that plays a major role in adrenal steroidogenesis. Catalyzes the hydroxylation at C-21 of progesterone and 17alpha-hydroxyprogesterone to respectively form 11- deoxycorticosterone and 11-deoxycortisol, intermediate metabolites in the biosynthetic pathway of mineralocorticoids and glucocorticoids (PubMed:[10602386](#), PubMed:[16984992](#), PubMed:[22014889](#), PubMed:[25855791](#), PubMed:[27721825](#)). Mechanistically, uses molecular oxygen inserting one oxygen atom into a substrate, and reducing the second into a water molecule, with two electrons provided by NADPH via cytochrome P450 reductase (CPR; NADPH-ferrihemoprotein reductase) (PubMed:[25855791](#)).

Cellular Location

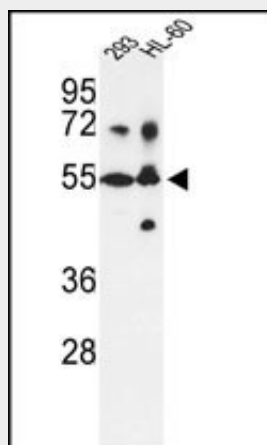
Endoplasmic reticulum membrane; Peripheral membrane protein. Microsome membrane; Peripheral membrane protein

CYP21A2 Antibody (N-term) - Protocols

Provided below are standard protocols that you may find useful for product applications.

- [Western Blot](#)
- [Blocking Peptides](#)
- [Dot Blot](#)
- [Immunohistochemistry](#)
- [Immunofluorescence](#)
- [Immunoprecipitation](#)
- [Flow Cytometry](#)
- [Cell Culture](#)

CYP21A2 Antibody (N-term) - Images



Western blot analysis of CYP21A2 Antibody (N-term) (Cat.#AP7880a) in 293, HL-60 cell line lysates (35ug/lane). CYP21A2 (arrow) was detected using the purified Pab.

CYP21A2 Antibody (N-term) - Background

CYP21A2 is a member of the cytochrome P450 superfamily of enzymes. The cytochrome P450 proteins are monooxygenases which catalyze many reactions involved in drug metabolism and synthesis of cholesterol, steroids and other lipids. This protein localizes to the endoplasmic reticulum and hydroxylates steroids at the 21 position. Its activity is required for the synthesis of steroid hormones including cortisol and aldosterone. Mutations in CYP21A2 gene cause congenital adrenal hyperplasia.

CYP21A2 Antibody (N-term) - References

Guerra-Junior,G., Clin. Exp. Immunol. 155 (2), 182-188 (2009)
Abid,F., Clin. Chem. Lab. Med. 46 (12), 1707-1713 (2008)
Nelson,D.R., Pharmacogenetics 14 (1), 1-18 (2004)