

**CYP4X1 Antibody (N-term)**  
**Purified Rabbit Polyclonal Antibody (Pab)**  
**Catalog # AP7885a**

**Specification**

---

**CYP4X1 Antibody (N-term) - Product Information**

Application	WB, IHC-P,E
Primary Accession	<a href="#">Q8N118</a>
Reactivity	Human
Host	Rabbit
Clonality	Polyclonal
Isotype	Rabbit IgG
Calculated MW	58875
Antigen Region	157-183

**CYP4X1 Antibody (N-term) - Additional Information**

**Gene ID** 260293

**Other Names**

Cytochrome P450 4X1, CYP4X1, CYP4X1

**Target/Specificity**

This CYP4X1 antibody is generated from rabbits immunized with a KLH conjugated synthetic peptide between 157-183 amino acids from the N-terminal region of human CYP4X1.

**Dilution**

WB~~1:1000

IHC-P~~1:10~50

**Format**

Purified polyclonal antibody supplied in PBS with 0.09% (W/V) sodium azide. This antibody is prepared by Saturated Ammonium Sulfate (SAS) precipitation followed by dialysis against PBS.

**Storage**

Maintain refrigerated at 2-8°C for up to 2 weeks. For long term storage store at -20°C in small aliquots to prevent freeze-thaw cycles.

**Precautions**

CYP4X1 Antibody (N-term) is for research use only and not for use in diagnostic or therapeutic procedures.

**CYP4X1 Antibody (N-term) - Protein Information**

**Name** CYP4X1 {ECO:0000303|PubMed:18549450, ECO:0000312|HGNC:HGNC:20244}

**Function** A cytochrome P450 monooxygenase that selectively catalyzes the epoxidation of the last double bond of the arachidonoyl moiety of anandamide, potentially modulating

endocannabinoid signaling. Has no hydroxylase activity toward various fatty acids, steroids and prostaglandins. Mechanistically, uses molecular oxygen inserting one oxygen atom into a substrate, and reducing the second into a water molecule, with two electrons provided by NADPH via cytochrome P450 reductase (CPR; NADPH-ferrihemoprotein reductase).

#### Cellular Location

Endoplasmic reticulum membrane {ECO:0000250|UniProtKB:Q6A152}; Single-pass membrane protein. Microsome membrane {ECO:0000250|UniProtKB:Q6A152}; Single-pass membrane protein

#### Tissue Location

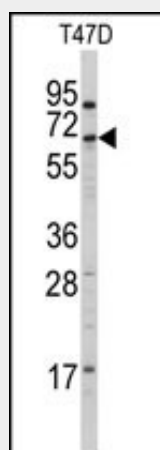
Expressed in brain, heart, kidney and skin and, at lower levels, in skeletal muscle and liver (PubMed:16478468, PubMed:18549450). In the brain, high levels are detected in amygdala and lower levels in globus pallidus and cerebellum (PubMed:18549450) In the heart, very high levels in aorta, but very low levels in other heart regions (PubMed:16478468, PubMed:18549450). Also expressed in breast, prostate and colon (PubMed:18549450)

### CYP4X1 Antibody (N-term) - Protocols

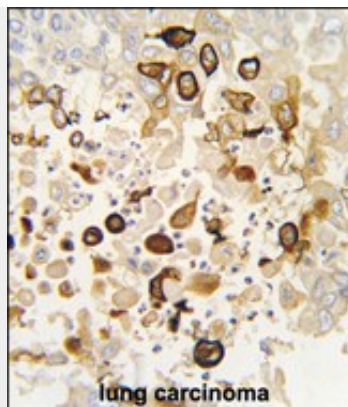
Provided below are standard protocols that you may find useful for product applications.

- [Western Blot](#)
- [Blocking Peptides](#)
- [Dot Blot](#)
- [Immunohistochemistry](#)
- [Immunofluorescence](#)
- [Immunoprecipitation](#)
- [Flow Cytometry](#)
- [Cell Culture](#)

### CYP4X1 Antibody (N-term) - Images



Western blot analysis of anti-CYP4X1 Antibody (N-term) (Cat.#AP7885a) in T47D cell line lysates (35ug/lane). CYP4X1 (arrow) was detected using the purified Pab.



Formalin-fixed and paraffin-embedded human lung carcinoma tissue reacted with CYP4X1 antibody (N-term), which was peroxidase-conjugated to the secondary antibody, followed by DAB staining. This data demonstrates the use of this antibody for immunohistochemistry; clinical relevance has not been evaluated.

#### **CYP4X1 Antibody (N-term) - Background**

CYP4X1 is a member of the cytochrome P450 superfamily of enzymes. The cytochrome P450 proteins are monooxygenases which catalyze many reactions involved in drug metabolism and synthesis of cholesterol, steroids and other lipids. The expression pattern of a similar rat protein suggests that this protein may be involved in neurovascular function in the brain.

#### **CYP4X1 Antibody (N-term) - References**

Savas,U., Arch. Biochem. Biophys. 436 (2), 377-385 (2005)  
Nelson,D.R., Pharmacogenetics 14 (1), 1-18 (2004)  
Bylund,J., Biochem. Biophys. Res. Commun. 296 (3), 677-684 (2002)