

**ALOX5AP Antibody (Center)**  
**Purified Rabbit Polyclonal Antibody (Pab)**  
**Catalog # AP7897c****Specification**

---

**ALOX5AP Antibody (Center) - Product Information**

Application	IHC-P, WB,E
Primary Accession	<a href="#">P20292</a>
Other Accession	<a href="#">P20291</a> , <a href="#">P30357</a> , <a href="#">P30356</a> , <a href="#">P30355</a> , <a href="#">Q2PG08</a> , <a href="#">Q148F2</a> , <a href="#">P30358</a>
Reactivity	Human
Predicted	Bovine, Monkey, Mouse, Pig, Rabbit, Rat, Sheep
Host	Rabbit
Clonality	Polyclonal
Isotype	Rabbit IgG
Calculated MW	18157
Antigen Region	86-117

**ALOX5AP Antibody (Center) - Additional Information****Gene ID** 241**Other Names**

Arachidonate 5-lipoxygenase-activating protein, FLAP, MK-886-binding protein, ALOX5AP, FLAP

**Target/Specificity**

This ALOX5AP antibody is generated from rabbits immunized with a KLH conjugated synthetic peptide between 86-117 amino acids from the Central region of human ALOX5AP.

**Dilution**

IHC-P~~1:10~50

WB~~1:1000

E~~Use at an assay dependent concentration.

**Format**

Purified polyclonal antibody supplied in PBS with 0.09% (W/V) sodium azide. This antibody is prepared by Saturated Ammonium Sulfate (SAS) precipitation followed by dialysis against PBS.

**Storage**

Maintain refrigerated at 2-8°C for up to 2 weeks. For long term storage store at -20°C in small aliquots to prevent freeze-thaw cycles.

**Precautions**

ALOX5AP Antibody (Center) is for research use only and not for use in diagnostic or therapeutic procedures.

**ALOX5AP Antibody (Center) - Protein Information**

**Name** ALOX5AP

**Synonyms** FLAP

**Function** Required for leukotriene biosynthesis by ALOX5 (5-lipoxygenase). Anchors ALOX5 to the membrane. Binds arachidonic acid, and could play an essential role in the transfer of arachidonic acid to ALOX5. Binds to MK-886, a compound that blocks the biosynthesis of leukotrienes.

**Cellular Location**

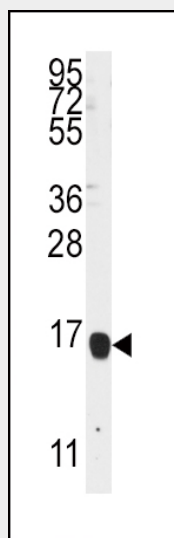
Nucleus membrane; Multi-pass membrane protein. Endoplasmic reticulum membrane; Multi-pass membrane protein

**ALOX5AP Antibody (Center) - Protocols**

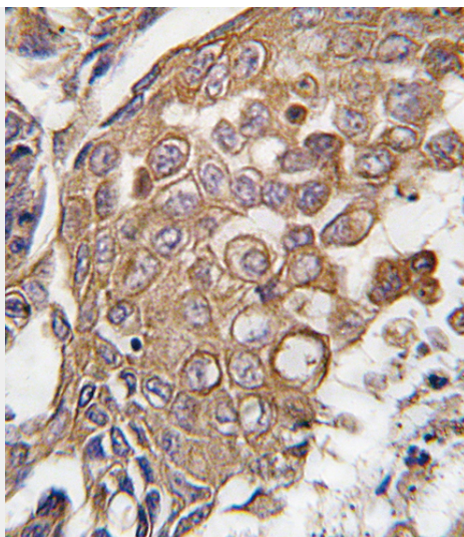
Provided below are standard protocols that you may find useful for product applications.

- [Western Blot](#)
- [Blocking Peptides](#)
- [Dot Blot](#)
- [Immunohistochemistry](#)
- [Immunofluorescence](#)
- [Immunoprecipitation](#)
- [Flow Cytometry](#)
- [Cell Culture](#)

**ALOX5AP Antibody (Center) - Images**



Western blot analysis of anti-ALOX5AP Antibody (Center) (Cat.#AP7897c) in K562 cell line lysates (35ug/lane). ALOX5AP (arrow) was detected using the purified Pab.



Formalin-fixed and paraffin-embedded human lung carcinoma tissue reacted with ALOX5AP antibody (Center), which was peroxidase-conjugated to the secondary antibody, followed by DAB staining. This data demonstrates the use of this antibody for immunohistochemistry; clinical relevance has not been evaluated.

#### **ALOX5AP Antibody (Center) - Background**

ALOX5AP is a protein which, with 5-lipoxygenase, is required for leukotriene synthesis. Leukotrienes are arachidonic acid metabolites which have been implicated in various types of inflammatory responses, including asthma, arthritis and psoriasis. This protein localizes to the plasma membrane. Inhibitors of its function impede translocation of 5-lipoxygenase from the cytoplasm to the cell membrane and inhibit 5-lipoxygenase activation.

#### **ALOX5AP Antibody (Center) - References**

Zintzaras,E., Am. J. Epidemiol. 169 (5), 523-532 (2009)  
Crosslin,D.R., Hum. Genet. 125 (2), 217-229 (2009)  
Steinhilber,D., Pharm Acta Helv 69 (1), 3-14 (1994)