

**MLK2 Antibody (C-term)**  
**Purified Rabbit Polyclonal Antibody (Pab)**  
**Catalog # AP7920a****Specification**

---

**MLK2 Antibody (C-term) - Product Information**

Application	IHC-P, WB,E
Primary Accession	<a href="#">Q02779</a>
Reactivity	Human
Host	Rabbit
Clonality	Polyclonal
Isotype	Rabbit IgG
Antigen Region	628-659

**MLK2 Antibody (C-term) - Additional Information****Gene ID** 4294**Other Names**

Mitogen-activated protein kinase kinase kinase 10, Mixed lineage kinase 2, Protein kinase MST, MAP3K10, MLK2, MST

**Target/Specificity**

This MLK2 antibody is generated from rabbits immunized with a KLH conjugated synthetic peptide between 628-659 amino acids from the C-terminal region of human MLK2.

**Dilution**

IHC-P~~1:50~100

WB~~1:1000

E~~Use at an assay dependent concentration.

**Format**

Purified polyclonal antibody supplied in PBS with 0.09% (W/V) sodium azide. This antibody is prepared by Saturated Ammonium Sulfate (SAS) precipitation followed by dialysis against PBS.

**Storage**

Maintain refrigerated at 2-8°C for up to 2 weeks. For long term storage store at -20°C in small aliquots to prevent freeze-thaw cycles.

**Precautions**

MLK2 Antibody (C-term) is for research use only and not for use in diagnostic or therapeutic procedures.

**MLK2 Antibody (C-term) - Protein Information****Name** MAP3K10**Synonyms** MLK2, MST

**Function** Activates the JUN N-terminal pathway.

**Tissue Location**

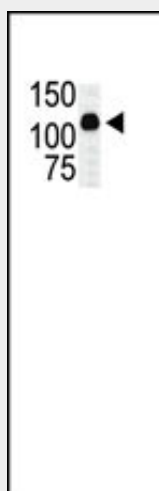
Expressed in brain and skeletal muscle.

**MLK2 Antibody (C-term) - Protocols**

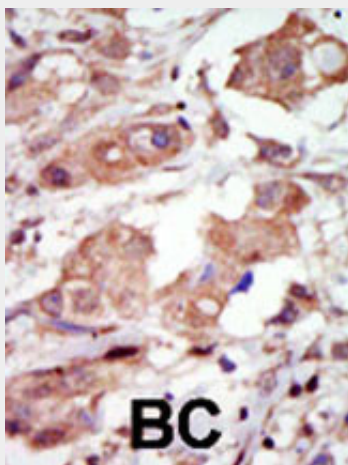
Provided below are standard protocols that you may find useful for product applications.

- [Western Blot](#)
- [Blocking Peptides](#)
- [Dot Blot](#)
- [Immunohistochemistry](#)
- [Immunofluorescence](#)
- [Immunoprecipitation](#)
- [Flow Cytometry](#)
- [Cell Culture](#)

**MLK2 Antibody (C-term) - Images**



The anti-MLK2 Pab (Cat. #AP7920a) is used in Western blot to detect MLK2 in transfected COS7 cell lysate. Data is kindly provided by Drs. M.K. Barthwal and A. Rana from Texas A&M University, Health Science Center (Temple, TX).



Formalin-fixed and paraffin-embedded human cancer tissue reacted with the primary antibody, which was peroxidase-conjugated to the secondary antibody, followed by DAB staining. This data demonstrates the use of this antibody for immunohistochemistry; clinical relevance has not been evaluated. BC = breast carcinoma; HC = hepatocarcinoma.

**MLK2 Antibody (C-term) - Background**

MLK2 is a member of the serine/threonine kinase family. This kinase has been shown to activate MAPK8/JNK and MKK4/SEK1, and this kinase itself can be phosphorylated, and thus activated by JNK kinases. This kinase functions preferentially on the JNK signaling pathway, and is reported to be involved in nerve growth factor (NGF) induced neuronal apoptosis.

**MLK2 Antibody (C-term) - References**

Dorow, D.S., et al., Eur. J. Biochem. 234(2):492-500 (1995).  
Kato, M., et al., Oncogene 10(7):1447-1451 (1995).  
Dorow, D.S., et al., Eur. J. Biochem. 213(2):701-710 (1993).

**MLK2 Antibody (C-term) - Citations**

- [Mixed lineage kinase-3 stabilizes and functionally cooperates with TRIBBL-3 to compromise mitochondrial integrity in cytokine-induced death of pancreatic beta cells.](#)
- [Mixed lineage kinase 2 and hippocampin are localized in Lewy bodies of Parkinson's disease.](#)