

SGK2 Antibody (C-term)
Purified Rabbit Polyclonal Antibody (Pab)
Catalog # AP7947b**Specification**

SGK2 Antibody (C-term) - Product Information

Application	IHC-P, WB,E
Primary Accession	Q9HBY8
Reactivity	Human
Host	Rabbit
Clonality	Polyclonal
Isotype	Rabbit IgG
Calculated MW	41175
Antigen Region	395-426

SGK2 Antibody (C-term) - Additional Information**Gene ID** 10110**Other Names**

Serine/threonine-protein kinase Sgk2, Serum/glucocorticoid-regulated kinase 2, SGK2

Target/Specificity

This SGK2 antibody is generated from rabbits immunized with a KLH conjugated synthetic peptide between 395-426 amino acids from the C-terminal region of human SGK2.

Dilution

IHC-P~~1:50~100

WB~~1:1000

E~~Use at an assay dependent concentration.

Format

Purified polyclonal antibody supplied in PBS with 0.09% (W/V) sodium azide. This antibody is prepared by Saturated Ammonium Sulfate (SAS) precipitation followed by dialysis against PBS.

Storage

Maintain refrigerated at 2-8°C for up to 2 weeks. For long term storage store at -20°C in small aliquots to prevent freeze-thaw cycles.

Precautions

SGK2 Antibody (C-term) is for research use only and not for use in diagnostic or therapeutic procedures.

SGK2 Antibody (C-term) - Protein Information**Name** SGK2**Function** Serine/threonine-protein kinase which is involved in the regulation of a wide variety of

ion channels, membrane transporters, cell growth, survival and proliferation. Up-regulates Na(+) channels: SCNN1A/ENAC, K(+) channels: KCNA3/Kv1.3, KCNE1 and KCNQ1, amino acid transporter: SLC6A19, glutamate transporter: SLC1A6/EAAT4, glutamate receptors: GRIA1/GLUR1 and GRIK2/GLUR6, Na(+)/H(+) exchanger: SLC9A3/NHE3, and the Na(+)/K(+) ATPase.

Cellular Location

Cytoplasm. Nucleus

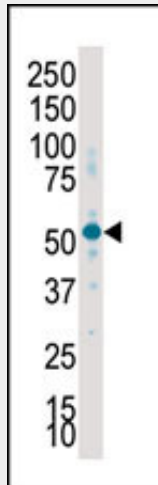
Tissue Location

Highly expressed in liver, kidney and pancreas, and at lower levels in brain.

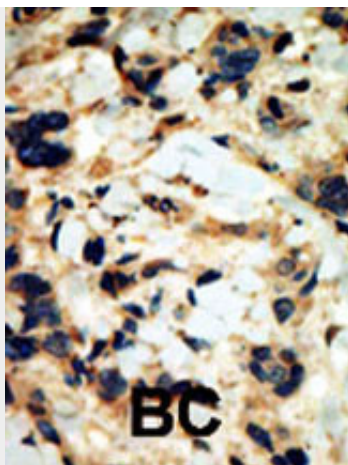
SGK2 Antibody (C-term) - Protocols

Provided below are standard protocols that you may find useful for product applications.

- [Western Blot](#)
- [Blocking Peptides](#)
- [Dot Blot](#)
- [Immunohistochemistry](#)
- [Immunofluorescence](#)
- [Immunoprecipitation](#)
- [Flow Cytometry](#)
- [Cell Culture](#)

SGK2 Antibody (C-term) - Images

Western blot analysis of anti-SKG2 Pab (Cat. #AP7947b) in placenta lysate. SKG2 (arrow) was detected using purified Pab. Secondary HRP-anti-rabbit was used for signal visualization with chemiluminescence.



Formalin-fixed and paraffin-embedded human cancer tissue reacted with the primary antibody, which was peroxidase-conjugated to the secondary antibody, followed by DAB staining. This data demonstrates the use of this antibody for immunohistochemistry; clinical relevance has not been evaluated. BC = breast carcinoma; HC = hepatocarcinoma.

SGK2 Antibody (C-term) - Background

SGK2, a Ser/Thr protein kinase, is similar to serum- and glucocorticoid-induced protein kinase (SGK), but this gene product is not induced by serum or glucocorticoids. Expression is induced in response to signals that activate phosphatidylinositol 3-kinase, which is also true for SGK.

SGK2 Antibody (C-term) - References

Friedrich, B., et al., Pflugers Arch. 445(6):693-696 (2003).
Embark, H.M., et al., Pflugers Arch. 445(5):601-606 (2003).
Gamper, N., et al., Pflugers Arch. 445(1):60-66 (2002).
Lang, F., et al., Sci. STKE 2001 (108), RE17 (2001).
Kobayashi, T., et al., Biochem. J. 344 Pt 1, 189-197 (1999).

SGK2 Antibody (C-term) - Citations

- [Progression Risk Score Estimation Based on Immunostaining Data in Oral Cancer Using Unsupervised Hierarchical Clustering Analysis: A Retrospective Study in Taiwan](#)