

LHB Antibody (C-term)
Purified Rabbit Polyclonal Antibody (Pab)
Catalog # AP7982b**Specification**

LHB Antibody (C-term) - Product Information

Application	IHC-P, WB,E
Primary Accession	P01229
Reactivity	Human
Host	Rabbit
Clonality	Polyclonal
Isotype	Rabbit IgG
Calculated MW	15345
Antigen Region	78-104

LHB Antibody (C-term) - Additional Information**Gene ID** 3972**Other Names**

Lutropin subunit beta, Lutropin beta chain, Luteinizing hormone subunit beta, LH-B, LSH-B, LSH-beta, LHB

Target/Specificity

This LHB antibody is generated from rabbits immunized with a KLH conjugated synthetic peptide between 78-104 amino acids from the C-terminal region of human LHB.

Dilution

IHC-P~~1:10~50

WB~~1:1000

E~~Use at an assay dependent concentration.

Format

Purified polyclonal antibody supplied in PBS with 0.09% (W/V) sodium azide. This antibody is prepared by Saturated Ammonium Sulfate (SAS) precipitation followed by dialysis against PBS.

Storage

Maintain refrigerated at 2-8°C for up to 2 weeks. For long term storage store at -20°C in small aliquots to prevent freeze-thaw cycles.

Precautions

LHB Antibody (C-term) is for research use only and not for use in diagnostic or therapeutic procedures.

LHB Antibody (C-term) - Protein Information**Name** LHB

Function Promotes spermatogenesis and ovulation by stimulating the testes and ovaries to synthesize steroids.

Cellular Location

Secreted.

Tissue Location

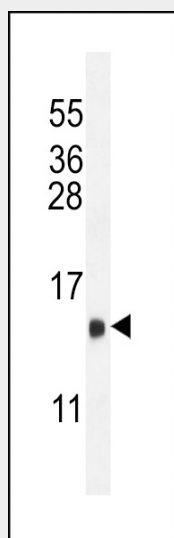
Pituitary gland.

LHB Antibody (C-term) - Protocols

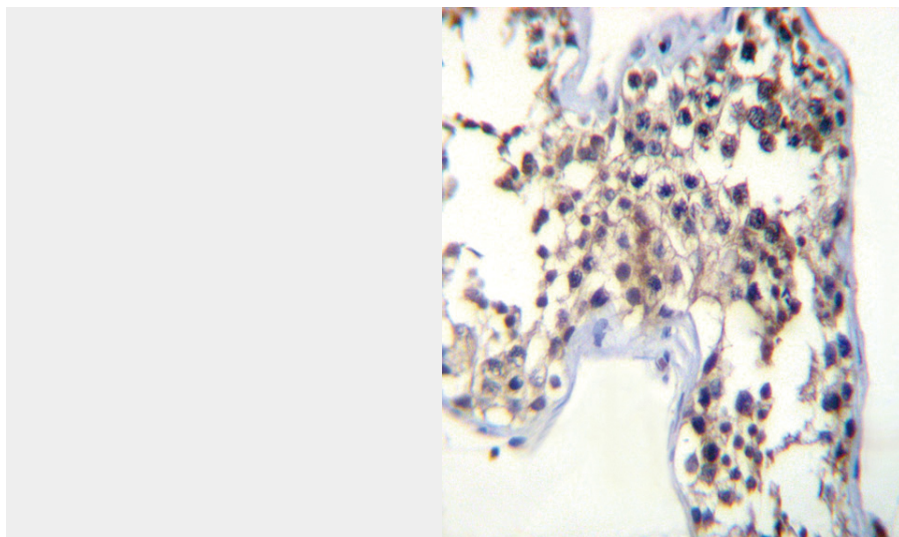
Provided below are standard protocols that you may find useful for product applications.

- [Western Blot](#)
- [Blocking Peptides](#)
- [Dot Blot](#)
- [Immunohistochemistry](#)
- [Immunofluorescence](#)
- [Immunoprecipitation](#)
- [Flow Cytometry](#)
- [Cell Culture](#)

LHB Antibody (C-term) - Images



LHB Antibody (C-term) (Cat. #AP7982b) western blot analysis in mouse heart tissue lysates (35ug/lane). This demonstrates the LHB antibody detected the LHB protein (arrow).



LHB Antibody (C-term) (Cat. #AP7982b) immunohistochemistry analysis in formalin fixed and paraffin embedded human testis tissue followed by peroxidase conjugation of the secondary antibody and DAB staining. This data demonstrates the use of LHB Antibody (C-term) for immunohistochemistry. Clinical relevance has not been evaluated.

LHB Antibody (C-term) - Background

LHB is a member of the glycoprotein hormone beta chain family and is the beta subunit of luteinizing hormone (LH). Glycoprotein hormones are heterodimers consisting of a common alpha subunit and a unique beta subunit which confers biological specificity. LH is expressed in the pituitary gland and promotes spermatogenesis and ovulation by stimulating the testes and ovaries to synthesize steroids.

LHB Antibody (C-term) - References

Lofrano-Porto, A., N. Engl. J. Med. 357 (9), 897-904 (2007)
Liu, S., Endocr. J. 52 (6), 781-784 (2005)
Keutmann, H.T., Mol. Endocrinol. 6 (6), 904-913 (1992)