

**CYP3A43 Antibody (Center)**  
**Purified Rabbit Polyclonal Antibody (Pab)**  
**Catalog # AP7999c****Specification**

---

**CYP3A43 Antibody (Center) - Product Information**

Application	IF, FC, WB,E
Primary Accession	<a href="#">Q9HB55</a>
Reactivity	Human
Host	Rabbit
Clonality	Polyclonal
Isotype	Rabbit IgG
Antigen Region	242-270

**CYP3A43 Antibody (Center) - Additional Information****Gene ID** 64816**Other Names**

Cytochrome P450 3A43, CYP3A43

**Target/Specificity**

This CYP3A43 antibody is generated from rabbits immunized with a KLH conjugated synthetic peptide between 242-270 amino acids from the Central region of human CYP3A43.

**Dilution**

IF~~1:10~50

FC~~1:10~50

WB~~1:2000

E~~Use at an assay dependent concentration.

**Format**

Purified polyclonal antibody supplied in PBS with 0.09% (W/V) sodium azide. This antibody is prepared by Saturated Ammonium Sulfate (SAS) precipitation followed by dialysis against PBS.

**Storage**

Maintain refrigerated at 2-8°C for up to 2 weeks. For long term storage store at -20°C in small aliquots to prevent freeze-thaw cycles.

**Precautions**

CYP3A43 Antibody (Center) is for research use only and not for use in diagnostic or therapeutic procedures.

**CYP3A43 Antibody (Center) - Protein Information****Name** CYP3A43**Function** Exhibits low testosterone 6-beta-hydroxylase activity.

**Cellular Location**

Endoplasmic reticulum membrane; Peripheral membrane protein. Microsome membrane; Peripheral membrane protein

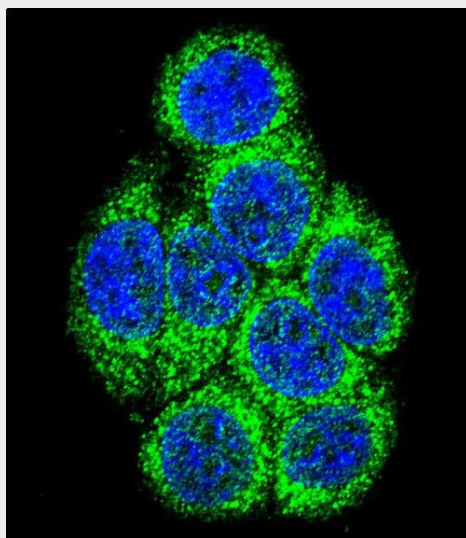
**Tissue Location**

Highest expression level in prostate. Also expressed in liver, kidney, pancreas, fetal liver and fetal skeletal muscle.

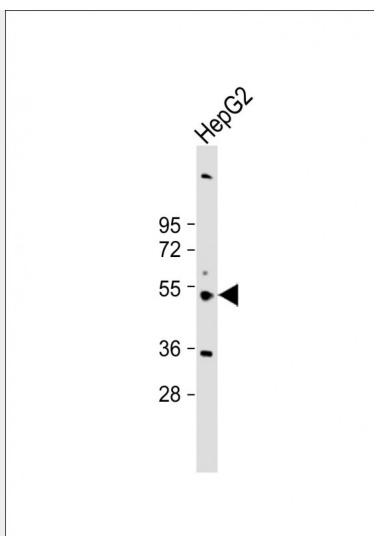
**CYP3A43 Antibody (Center) - Protocols**

Provided below are standard protocols that you may find useful for product applications.

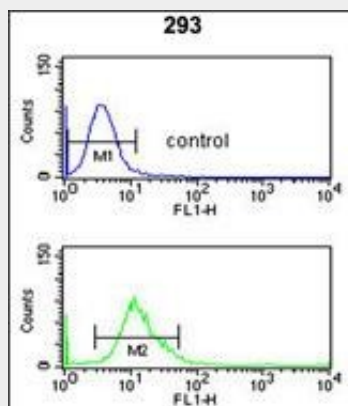
- [Western Blot](#)
- [Blocking Peptides](#)
- [Dot Blot](#)
- [Immunohistochemistry](#)
- [Immunofluorescence](#)
- [Immunoprecipitation](#)
- [Flow Cytometry](#)
- [Cell Culture](#)

**CYP3A43 Antibody (Center) - Images**

Confocal immunofluorescent analysis of CYP3A43 Antibody (Center)(Cat#AP7999c) with 293 cell followed by Alexa Fluor 488-conjugated goat anti-rabbit IgG (green). DAPI was used to stain the cell nuclear (blue).



Anti-CYP3A43 Antibody (Center) at 1:2000 dilution + HepG2 whole cell lysate Lysates/proteins at 20 µg per lane. Secondary Goat Anti-Rabbit IgG, (H+L), Peroxidase conjugated at 1/10000 dilution. Predicted band size : 58 kDa Blocking/Dilution buffer: 5% NFDM/TBST.



CYP3A43 Antibody (Center) (Cat. #AP7999c) flow cytometry analysis of 293 cells (bottom histogram) compared to a negative control cell (top histogram). FITC-conjugated goat-anti-rabbit secondary antibodies were used for the analysis.

### CYP3A43 Antibody (Center) - Background

CYP3A43 is a member of the cytochrome P450 superfamily of enzymes. The cytochrome P450 proteins are monooxygenases which catalyze many reactions involved in drug metabolism and synthesis of cholesterol, steroids and other lipids. This protein has a low level of testosterone hydroxylase activity. Although it bears homology to some drug-metabolizing cytochrome P450s, the protein unknown whether the enzyme is also involved in xenobiotic metabolism.

### CYP3A43 Antibody (Center) - References

Domanski T.L., Finta C. Mol. Pharmacol. 59:386-392(2001)  
Westlind A., Malmebo S. Biochem. Biophys. Res. Commun. 281:1349-1355(2001)  
Cauffiez C., Lo-Guidice J.-M. Hum. Mutat. 23:101-101(2004)

### CYP3A43 Antibody (Center) - Citations

- [Functional expression and comparative characterization of four feline P450 cytochromes using fluorescent substrates.](#)