

GLK Antibody (C-term)
Purified Rabbit Polyclonal Antibody (Pab)
Catalog # AP8005B**Specification**

GLK Antibody (C-term) - Product Information

Application	IHC-P, WB,E
Primary Accession	Q8IVH8
Reactivity	Human
Host	Rabbit
Clonality	Polyclonal
Isotype	Rabbit IgG
Calculated MW	101316
Antigen Region	423-453

GLK Antibody (C-term) - Additional Information**Gene ID** 8491**Other Names**

Mitogen-activated protein kinase kinase kinase kinase 3, Germinal center kinase-related protein kinase, GLK, MAPK/ERK kinase kinase kinase 3, MEK kinase kinase 3, MEKKK 3, MAP4K3, RAB8IPL1

Target/Specificity

This GLK antibody is generated from rabbits immunized with a KLH conjugated synthetic peptide between 423-453 amino acids from the C-terminal region of human GLK.

Dilution

IHC-P~~1:50~100

WB~~1:1000

E~~Use at an assay dependent concentration.

Format

Purified polyclonal antibody supplied in PBS with 0.09% (W/V) sodium azide. This antibody is prepared by Saturated Ammonium Sulfate (SAS) precipitation followed by dialysis against PBS.

Storage

Maintain refrigerated at 2-8°C for up to 2 weeks. For long term storage store at -20°C in small aliquots to prevent freeze-thaw cycles.

Precautions

GLK Antibody (C-term) is for research use only and not for use in diagnostic or therapeutic procedures.

GLK Antibody (C-term) - Protein Information**Name** MAP4K3 ([HGNC:6865](#))

Synonyms RAB8IPL1

Function Serine/threonine kinase that plays a role in the response to environmental stress. Appears to act upstream of the JUN N-terminal pathway (PubMed:[9275185](#)). Activator of the Hippo signaling pathway which plays a pivotal role in organ size control and tumor suppression by restricting proliferation and promoting apoptosis. MAP4Ks act in parallel to and are partially redundant with STK3/MST2 and STK4/MST2 in the phosphorylation and activation of LATS1/2, and establish MAP4Ks as components of the expanded Hippo pathway (PubMed:[26437443](#)).

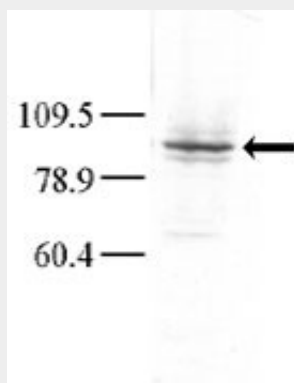
Tissue Location

Ubiquitously expressed in all tissues examined, with high levels in heart, brain, placenta, skeletal muscle, kidney and pancreas and lower levels in lung and liver

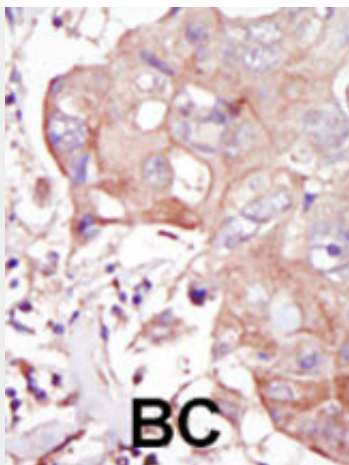
GLK Antibody (C-term) - Protocols

Provided below are standard protocols that you may find useful for product applications.

- [Western Blot](#)
- [Blocking Peptides](#)
- [Dot Blot](#)
- [Immunohistochemistry](#)
- [Immunofluorescence](#)
- [Immunoprecipitation](#)
- [Flow Cytometry](#)
- [Cell Culture](#)

GLK Antibody (C-term) - Images

Western blot analysis of anti-GLK Pab (Cat. #AP8005b) in HeLa cell lysate. Dilution for anti-GLK was 1:100; dilution for secondary goat anti-rabbit-HRP was 1:7000. A chemiluminescent kit was used for development of the Western blot. Data and protocol courtesy of Dr. Richard Lu, Partners HealthCare System at Harvard University.



Formalin-fixed and paraffin-embedded human cancer tissue reacted with the primary antibody, which was peroxidase-conjugated to the secondary antibody, followed by DAB staining. This data demonstrates the use of this antibody for immunohistochemistry; clinical relevance has not been evaluated. BC = breast carcinoma; HC = hepatocarcinoma.

GLK Antibody (C-term) - Background

GLK is a member of the Ste20 family of serine/threonine protein kinases. The protein belongs to the subfamily that consists of members, such as germinal center kinase (GCK), that are characterized by an N-terminal catalytic domain and C-terminal regulatory domain. The kinase activity of the encoded protein can be stimulated by UV radiation and tumor necrosis factor- α . The protein specifically activates the c-Jun N-terminal kinase (JNK) signaling pathway. Evidence suggests that it functions upstream of mitogen-activated protein kinase kinase kinase 1 (MEKK1). This gene previously was referred to as RAB8-interacting protein-like 1 (RAB8IPL1), but it has been renamed mitogen-activated protein kinase kinase kinase 3 (MAP4K3).

GLK Antibody (C-term) - References

Diener, K., et al., Proc. Natl. Acad. Sci. U.S.A. 94(18):9687-9692 (1997).