

p70 S6Kbeta Antibody (C-term)
Purified Rabbit Polyclonal Antibody (Pab)
Catalog # AP8009a

Specification

p70 S6Kbeta Antibody (C-term) - Product Information

Application	WB,E
Primary Accession	Q9UBS0
Reactivity	Human
Host	Rabbit
Clonality	Polyclonal
Isotype	Rabbit IgG
Antigen Region	452-482

p70 S6Kbeta Antibody (C-term) - Additional Information

Gene ID 6199

Other Names

Ribosomal protein S6 kinase beta-2, S6K-beta-2, S6K2, 70 kDa ribosomal protein S6 kinase 2, P70S6K2, p70-S6K 2, S6 kinase-related kinase, SRK, Serine/threonine-protein kinase 14B, p70 ribosomal S6 kinase beta, S6K-beta, p70 S6 kinase beta, p70 S6K-beta, p70 S6KB, p70-beta, RPS6KB2, STK14B

Target/Specificity

This p70 S6Kbeta antibody is generated from rabbits immunized with a KLH conjugated synthetic peptide between 452-482 amino acids from the C-terminal region of human p70 S6Kbeta.

Dilution

WB~~1:1000

E~~Use at an assay dependent concentration.

Format

Purified polyclonal antibody supplied in PBS with 0.09% (W/V) sodium azide. This antibody is prepared by Saturated Ammonium Sulfate (SAS) precipitation followed by dialysis against PBS.

Storage

Maintain refrigerated at 2-8°C for up to 2 weeks. For long term storage store at -20°C in small aliquots to prevent freeze-thaw cycles.

Precautions

p70 S6Kbeta Antibody (C-term) is for research use only and not for use in diagnostic or therapeutic procedures.

p70 S6Kbeta Antibody (C-term) - Protein Information

Name RPS6KB2

Synonyms STK14B

Function Phosphorylates specifically ribosomal protein S6 (PubMed:[29750193](#)). Seems to act downstream of mTOR signaling in response to growth factors and nutrients to promote cell proliferation, cell growth and cell cycle progression in an alternative pathway regulated by MEAK7 (PubMed:[29750193](#)).

Cellular Location

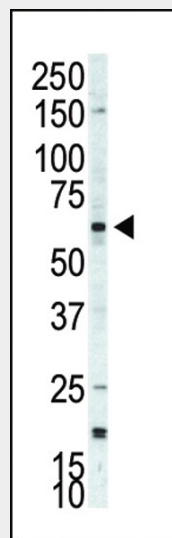
Cytoplasm. Nucleus.

p70 S6Kbeta Antibody (C-term) - Protocols

Provided below are standard protocols that you may find useful for product applications.

- [Western Blot](#)
- [Blocking Peptides](#)
- [Dot Blot](#)
- [Immunohistochemistry](#)
- [Immunofluorescence](#)
- [Immunoprecipitation](#)
- [Flow Cytometry](#)
- [Cell Culture](#)

p70 S6Kbeta Antibody (C-term) - Images



Western blot analysis of anti-p70S6Kbeta Pab (Cat. #AP8009a) in A375 cell lysate. p70S6Kbeta (arrow) was detected using purified Pab. Secondary HRP-anti-rabbit was used for signal visualization with chemiluminescence.

p70 S6Kbeta Antibody (C-term) - Background

This gene encodes a member of the RSK (ribosomal S6 kinase) family of serine/threonine kinases. This kinase contains 2 nonidentical kinase catalytic domains and phosphorylates the S6 ribosomal protein and eucaryotic translation initiation factor 4B. Phosphorylation of S6 leads to an increase in protein synthesis and cell proliferation.

p70 S6Kbeta Antibody (C-term) - References

Strausberg, R.L., et al., Proc. Natl. Acad. Sci. U.S.A. 99(26):16899-16903 (2002).

Lee-Fruman, K.K., et al., Oncogene 18(36):5108-5114 (1999).

Saitoh, M., et al., Biochem. Biophys. Res. Commun. 253(2):470-476 (1998).

Gout, I., et al., J. Biol. Chem. 273(46):30061-30064 (1998).

p70 S6Kbeta Antibody (C-term) - Citations

- [The Class I PI3K inhibitor S14161 induces autophagy in malignant blood cells by modulating the Beclin 1/Vps34 complex.](#)
- [Regulatory effects of SKAR in interferon \$\alpha\$ signaling and its role in the generation of type I IFN responses.](#)
- [S6 kinase 2 potentiates interleukin-3-driven cell proliferation.](#)