

RPS6KB2 Antibody
Affinity Purified Rabbit Polyclonal Antibody (Pab)
Catalog # AP8009e**Specification**

RPS6KB2 Antibody - Product Information

Application	FC, IHC-P, WB,E
Primary Accession	Q9UBS0
Reactivity	Human
Host	Rabbit
Clonality	Polyclonal
Isotype	Rabbit IgG
Calculated MW	53455

RPS6KB2 Antibody - Additional Information**Gene ID** 6199**Other Names**

Ribosomal protein S6 kinase beta-2, S6K-beta-2, S6K2, 70 kDa ribosomal protein S6 kinase 2, P70S6K2, p70-S6K 2, S6 kinase-related kinase, SRK, Serine/threonine-protein kinase 14B, p70 ribosomal S6 kinase beta, S6K-beta, p70 S6 kinase beta, p70 S6K-beta, p70 S6KB, p70-beta, RPS6KB2, STK14B

Target/Specificity

This RPS6KB2 antibody is generated from rabbits immunized with human RPS6KB2 recombinant protein.

Dilution

FC~~1:10~50
IHC-P~~1:50~100
WB~~1:1000
E~~Use at an assay dependent concentration.

Format

Purified polyclonal antibody supplied in PBS with 0.09% (W/V) sodium azide. This antibody is purified through a protein A column, followed by peptide affinity purification.

Storage

Maintain refrigerated at 2-8°C for up to 2 weeks. For long term storage store at -20°C in small aliquots to prevent freeze-thaw cycles.

Precautions

RPS6KB2 Antibody is for research use only and not for use in diagnostic or therapeutic procedures.

RPS6KB2 Antibody - Protein Information**Name** RPS6KB2

Synonyms STK14B

Function Phosphorylates specifically ribosomal protein S6 (PubMed:[29750193](#)). Seems to act downstream of mTOR signaling in response to growth factors and nutrients to promote cell proliferation, cell growth and cell cycle progression in an alternative pathway regulated by MEAK7 (PubMed:[29750193](#)).

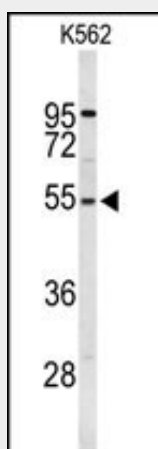
Cellular Location

Cytoplasm. Nucleus.

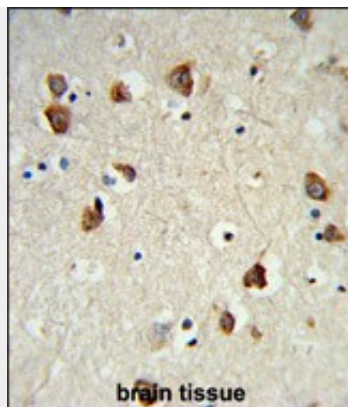
RPS6KB2 Antibody - Protocols

Provided below are standard protocols that you may find useful for product applications.

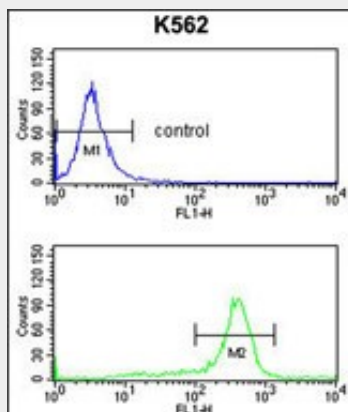
- [Western Blot](#)
- [Blocking Peptides](#)
- [Dot Blot](#)
- [Immunohistochemistry](#)
- [Immunofluorescence](#)
- [Immunoprecipitation](#)
- [Flow Cytometry](#)
- [Cell Culture](#)

RPS6KB2 Antibody - Images

Western blot analysis of RPS6KB2 Antibody (Cat. #AP8009e) in K562 cell line lysates (35ug/lane). RPS6KB2 (arrow) was detected using the purified Pab.



Formalin-fixed and paraffin-embedded mouse brain tissue reacted with RPS6KB2 Antibody, which was peroxidase-conjugated to the secondary antibody, followed by DAB staining. This data demonstrates the use of this antibody for immunohistochemistry; clinical relevance has not been evaluated.



RPS6KB2 Antibody (Cat. #AP8009e) flow cytometry analysis of K562 cells (bottom histogram) compared to a negative control cell (top histogram). FITC-conjugated goat-anti-rabbit secondary antibodies were used for the analysis.

RPS6KB2 Antibody - Background

RPS6KB2 is a member of the RSK (ribosomal S6 kinase) family of serine/threonine kinases. This kinase contains 2 nonidentical kinase catalytic domains and phosphorylates the S6 ribosomal protein and eucaryotic translation initiation factor 4B. Phosphorylation of S6 leads to an increase in protein synthesis and cell proliferation.

RPS6KB2 Antibody - References

- Strausberg, R.L., et al., Proc. Natl. Acad. Sci. U.S.A. 99(26):16899-16903 (2002).
- Lee-Fruman, K.K., et al., Oncogene 18(36):5108-5114 (1999).
- Saitoh, M., et al., Biochem. Biophys. Res. Commun. 253(2):470-476 (1998).
- Gout, I., et al., J. Biol. Chem. 273(46):30061-30064 (1998).