

PI3KC2G Antibody (N-term)
Purified Rabbit Polyclonal Antibody (Pab)
Catalog # AP8012a**Specification**

PI3KC2G Antibody (N-term) - Product Information

Application	IHC-P, WB,E
Primary Accession	O75747
Reactivity	Human
Host	Rabbit
Clonality	Polyclonal
Isotype	Rabbit IgG
Calculated MW	170682
Antigen Region	93-123

PI3KC2G Antibody (N-term) - Additional Information**Gene ID** 5288**Other Names**

Phosphatidylinositol 4-phosphate 3-kinase C2 domain-containing subunit gamma, PI3K-C2-gamma, PtdIns-3-kinase C2 subunit gamma, Phosphoinositide 3-kinase-C2-gamma, PIK3C2G

Target/Specificity

This PI3KC2G antibody is generated from rabbits immunized with a KLH conjugated synthetic peptide between 93-123 amino acids from the N-terminal region of human PI3KC2G.

Dilution

IHC-P~~1:50~100

WB~~1:1000

E~~Use at an assay dependent concentration.

Format

Purified polyclonal antibody supplied in PBS with 0.09% (W/V) sodium azide. This antibody is prepared by Saturated Ammonium Sulfate (SAS) precipitation followed by dialysis against PBS.

Storage

Maintain refrigerated at 2-8°C for up to 2 weeks. For long term storage store at -20°C in small aliquots to prevent freeze-thaw cycles.

Precautions

PI3KC2G Antibody (N-term) is for research use only and not for use in diagnostic or therapeutic procedures.

PI3KC2G Antibody (N-term) - Protein Information**Name** PIK3C2G

Function Generates phosphatidylinositol 3-phosphate (PtdIns3P) and phosphatidylinositol 3,4-bisphosphate (PtdIns(3,4)P₂) that act as second messengers (By similarity). May play a role in SDF1A-stimulated chemotaxis (By similarity).

Cellular Location

Membrane {ECO:0000250|UniProtKB:O70167}; Peripheral membrane protein {ECO:0000250|UniProtKB:O70167}

Tissue Location

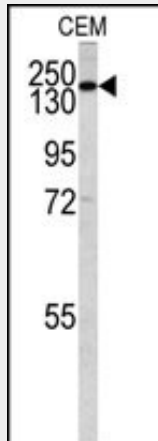
Highly expressed in liver, prostate and testis. Lower levels in small intestine, kidney and pancreas

PI3KC2G Antibody (N-term) - Protocols

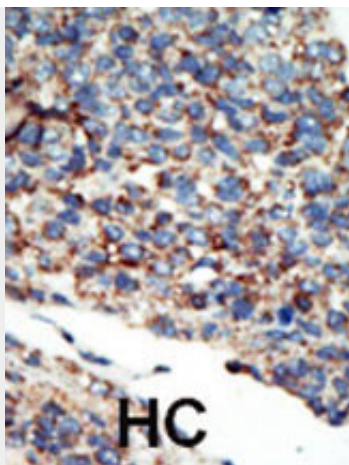
Provided below are standard protocols that you may find useful for product applications.

- [Western Blot](#)
- [Blocking Peptides](#)
- [Dot Blot](#)
- [Immunohistochemistry](#)
- [Immunofluorescence](#)
- [Immunoprecipitation](#)
- [Flow Cytometry](#)
- [Cell Culture](#)

PI3KC2G Antibody (N-term) - Images



Western blot analysis of PI3KC2G antibody (N-term) (Cat.# AP8012a) in CEM cell line lysates (35ug/lane). PI3KC2G (arrow) was detected using the purified Pab.



Formalin-fixed and paraffin-embedded human cancer tissue reacted with the primary antibody, which was peroxidase-conjugated to the secondary antibody, followed by AEC staining. This data demonstrates the use of this antibody for immunohistochemistry; clinical relevance has not been evaluated. BC = breast carcinoma; HC = hepatocarcinoma.

PI3KC2G Antibody (N-term) - Background

PI3KC2G belongs to the phosphoinositide 3-kinase (PI3K) family. PI3-kinases play roles in signaling pathways involved in cell proliferation, oncogenic transformation, cell survival, cell migration, and intracellular protein trafficking. This protein contains a lipid kinase catalytic domain as well as a C-terminal C2 domain, a characteristic of class II PI3-kinases. C2 domains act as calcium-dependent phospholipid binding motifs that mediate translocation of proteins to membranes, and may also mediate protein-protein interactions. The biological function of this gene has not yet been determined.

PI3KC2G Antibody (N-term) - References

Rozycka, M., et al., Genomics 54(3):569-574 (1998).