

NME6 Antibody (N-term)
Purified Rabbit Polyclonal Antibody (Pab)
Catalog # AP8083a**Specification**

NME6 Antibody (N-term) - Product Information

Application	WB,E
Primary Accession	O75414
Reactivity	Human
Host	Rabbit
Clonality	Polyclonal
Isotype	Rabbit IgG
Calculated MW	21142
Antigen Region	80-110

NME6 Antibody (N-term) - Additional Information**Gene ID** 10201**Other Names**

Nucleoside diphosphate kinase 6, NDK 6, NDP kinase 6, Inhibitor of p53-induced apoptosis-alpha, IPIA-alpha, nm23-H6, NME6

Target/Specificity

This NME6 antibody is generated from rabbits immunized with a KLH conjugated synthetic peptide between 80-110 amino acids from the N-terminal region of human NME6.

Dilution

WB~~1:1000

Format

Purified polyclonal antibody supplied in PBS with 0.09% (W/V) sodium azide. This antibody is prepared by Saturated Ammonium Sulfate (SAS) precipitation followed by dialysis against PBS.

Storage

Maintain refrigerated at 2-8°C for up to 2 weeks. For long term storage store at -20°C in small aliquots to prevent freeze-thaw cycles.

Precautions

NME6 Antibody (N-term) is for research use only and not for use in diagnostic or therapeutic procedures.

NME6 Antibody (N-term) - Protein Information**Name** NME6

Function Major role in the synthesis of nucleoside triphosphates other than ATP. The ATP gamma phosphate is transferred to the NDP beta phosphate via a ping-pong mechanism, using a

phosphorylated active-site intermediate. Inhibitor of p53-induced apoptosis.

Tissue Location

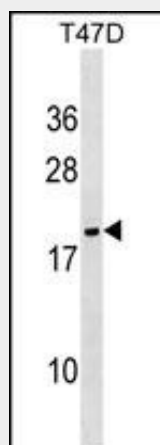
Expressed at a moderately low level in many tissues. Most abundant in kidney, prostate, ovary, intestine, and spleen

NME6 Antibody (N-term) - Protocols

Provided below are standard protocols that you may find useful for product applications.

- [Western Blot](#)
- [Blocking Peptides](#)
- [Dot Blot](#)
- [Immunohistochemistry](#)
- [Immunofluorescence](#)
- [Immunoprecipitation](#)
- [Flow Cytometry](#)
- [Cell Culture](#)

NME6 Antibody (N-term) - Images



NME6 Antibody (N-term) (Cat. #AP8083a) western blot analysis in T47D cell line lysates (35ug/lane). This demonstrates the NME6 antibody detected the NME6 protein (arrow).

NME6 Antibody (N-term) - Background

NME6 plays a major role in the synthesis of nucleoside triphosphates other than ATP. It is an inhibitor of p53-induced apoptosis. NME6 is expressed at a moderately low level in many tissues, most abundantly in kidney, prostate, ovary, intestine, and spleen.

NME6 Antibody (N-term) - References

Strausberg, R.L., et al., Proc. Natl. Acad. Sci. U.S.A. 99(26):16899-16903 (2002).
Mehus, J.G., et al., Hum. Genet. 104(6):454-459 (1999).