

PACSIN2 Antibody (C-term)
Purified Rabbit Polyclonal Antibody (Pab)
Catalog # AP8088b

Specification

PACSIN2 Antibody (C-term) - Product Information

Application	WB, IHC-P,E
Primary Accession	Q9UNF0
Reactivity	Human, Mouse
Host	Rabbit
Clonality	Polyclonal
Isotype	Rabbit Ig
Antigen Region	342-371

PACSIN2 Antibody (C-term) - Additional Information

Gene ID 11252

Other Names

Protein kinase C and casein kinase substrate in neurons protein 2, Syndapin-2, Syndapin-II, PACSIN2

Target/Specificity

This PACSIN2 antibody is generated from rabbits immunized with a KLH conjugated synthetic peptide between 342-371 amino acids from the C-terminal region of human PACSIN2.

Dilution

WB~~1:1000
IHC-P~~1:50~100

Format

Purified polyclonal antibody supplied in PBS with 0.09% (W/V) sodium azide. This antibody is purified through a protein A column, followed by peptide affinity purification.

Storage

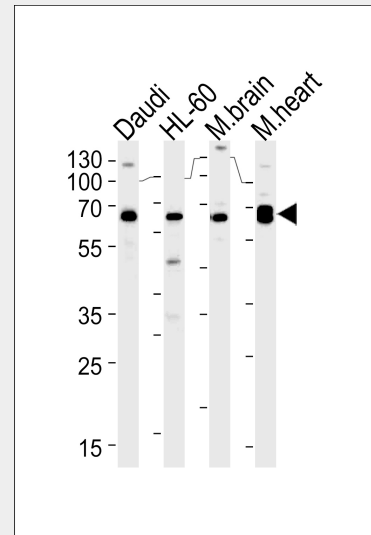
Maintain refrigerated at 2-8°C for up to 2 weeks. For long term storage store at -20°C in small aliquots to prevent freeze-thaw cycles.

Precautions

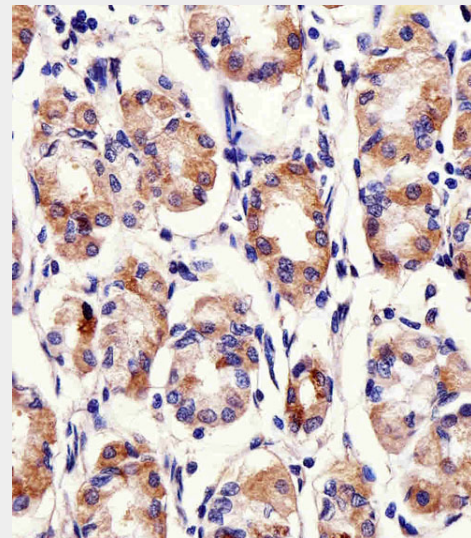
PACSIN2 Antibody (C-term) is for research use only and not for use in diagnostic or therapeutic procedures.

PACSIN2 Antibody (C-term) - Protein Information

Name PACSIN2



PACSIN2 Antibody (S357) (Cat.# AP8088b) western blot analysis in Daudi,HL-60 cell line and mouse brain, rat heart lysates (35ug/lane).This demonstrates the PACSIN2 antibody detected the PACSIN2 protein (arrow).



Immunohistochemical analysis of paraffin-embedded H. stomach section using PACSIN2 Antibody (C-term)(Cat#AP8088b). AP8088b was diluted at 1:25 dilution. A peroxidase-conjugated goat anti-rabbit IgG at 1:400 dilution was used as the secondary antibody, followed by DAB staining.

Function

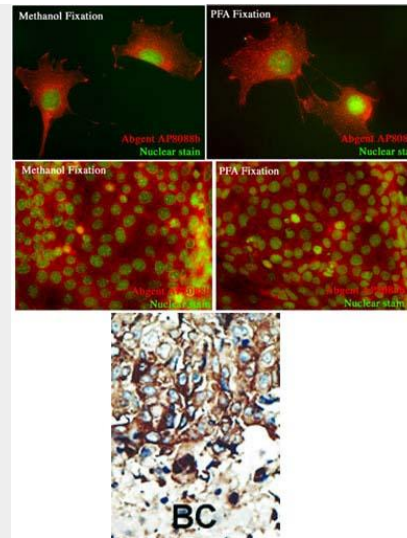
Regulates the morphogenesis and endocytosis of caveolae (By similarity). Lipid-binding protein that is able to promote the tubulation of the phosphatidic acid-containing membranes it preferentially binds. Plays a role in intracellular vesicle-mediated transport. Involved in the endocytosis of cell-surface receptors like the EGF receptor, contributing to its internalization in the absence of EGF stimulus.

Cellular Location

Cytoplasm. Cytoplasm, cytoskeleton. Cytoplasmic vesicle membrane; Peripheral membrane protein; Cytoplasmic side. Early endosome. Recycling endosome membrane. Cell projection, ruffle membrane; Peripheral membrane protein; Cytoplasmic side. Cell membrane; Peripheral membrane protein; Cytoplasmic side. Cell projection Membrane, caveola. Note=Detected at the neck of flask-shaped caveolae. Localization to tubular recycling endosomes probably requires interaction with MICALL1 and EHD1

Tissue Location

Widely expressed.



Formalin-fixed and paraffin-embedded human cancer tissue reacted with the primary antibody, which was peroxidase-conjugated to the secondary antibody, followed by DAB staining. This data demonstrates the use of this antibody for immunohistochemistry; clinical relevance has not been evaluated. BC = breast carcinoma; HC = hepatocarcinoma.

PACSIN2 Antibody (C-term) - Protocols

Provided below are standard protocols that you may find useful for product applications.

- [Western Blot](#)
- [Blocking Peptides](#)
- [Dot Blot](#)
- [Immunohistochemistry](#)
- [Immunofluorescence](#)
- [Immunoprecipitation](#)
- [Flow Cytometry](#)
- [Cell Culture](#)

PACSIN2 Antibody (C-term) - Background

PACSIN may play a role in vesicle formation and transport. This protein homo- and hetero-aggregates with other PACSINs. It also binds dynamin 1, synaptojanin, synapsin 1 and the neural Wiskott-Aldrich syndrome protein (N-WASP). The protein exhibits a vesicle-like cytoplasmic distribution and is ubiquitously expressed. PACSIN is phosphorylated by casein kinase 2 (CK2) and protein kinase C (PKC). The protein contains 1 FCH domain and 1 SH3 domain.

PACSIN2 Antibody (C-term) - References

Strausberg, R.L., et al., Proc. Natl. Acad. Sci. U.S.A. 99(26):16899-16903 (2002). Wiemann, S., et al., Genome Res. 11(3):422-435 (2001). Ritter, B., et al., FEBS Lett. 454(3):356-362 (1999). Dunham, I., et al., Nature 402(6761):489-495 (1999).

PACSIN2 Antibody (C-term) - Citations

- [A disease-associated frameshift mutation in caveolin-1 disrupts caveolae formation and function through introduction of a de novo ER retention signal.](#)
- [Clostridium difficile Toxin A Undergoes Clathrin-Independent, PACSIN2-Dependent Endocytosis.](#)
- [Characterization of a caveolin-1 mutation associated with both PAH and congenital generalized lipodystrophy.](#)
- [EHD3 is Required for Tubular Recycling Endosome Stabilization and an Asparagine-Glutamic Acid Residue Pair within its EH Domain Dictates its Selective Binding to NPF Peptides.](#)
- [Endocytic recycling protein EHD1 regulates primary cilia morphogenesis and SHH signaling during neural tube development.](#)
- [Differential roles of C-terminal Eps15 homology domain proteins as vesiculators and tubulators of recycling endosomes.](#)
- [Cooperation of MICAL-L1, syndapin2, and phosphatidic acid in tubular recycling endosome biogenesis.](#)
- [The F-BAR protein PACSIN2 regulates epidermal growth factor receptor internalization.](#)

- [Pacsin 2 is recruited to caveolae and functions in caveolar biogenesis.](#)
- [The F-BAR domain protein PACSIN2 associates with Rac1 and regulates cell spreading and migration.](#)