

SNF1LK Antibody (C-term)
Purified Rabbit Polyclonal Antibody (Pab)
Catalog # AP8099b**Specification**

SNF1LK Antibody (C-term) - Product Information

Application	WB, IHC-P,E
Primary Accession	P57059
Reactivity	Human, Mouse
Host	Rabbit
Clonality	Polyclonal
Isotype	Rabbit IgG
Antigen Region	567-597

SNF1LK Antibody (C-term) - Additional Information**Gene ID** 102724428;150094**Other Names**

Serine/threonine-protein kinase SIK1, Salt-inducible kinase 1, SIK-1, Serine/threonine-protein kinase SNF1-like kinase 1, Serine/threonine-protein kinase SNF1LK, SIK1, SIK, SNF1LK

Target/Specificity

This SNF1LK antibody is generated from rabbits immunized with a KLH conjugated synthetic peptide between 567-597 amino acids from the C-terminal region of human SNF1LK.

Dilution

WB~~1:1000
IHC-P~~1:50~100
E~~Use at an assay dependent concentration.

Format

Purified polyclonal antibody supplied in PBS with 0.09% (W/V) sodium azide. This antibody is prepared by Saturated Ammonium Sulfate (SAS) precipitation followed by dialysis against PBS.

Storage

Maintain refrigerated at 2-8°C for up to 2 weeks. For long term storage store at -20°C in small aliquots to prevent freeze-thaw cycles.

Precautions

SNF1LK Antibody (C-term) is for research use only and not for use in diagnostic or therapeutic procedures.

SNF1LK Antibody (C-term) - Protein Information**Name** SIK1**Synonyms** SIK, SNF1LK

Function Serine/threonine-protein kinase involved in various processes such as cell cycle regulation, gluconeogenesis and lipogenesis regulation, muscle growth and differentiation and tumor suppression. Phosphorylates HDAC4, HDAC5, PPME1, SREBF1, CRTC1/TORC1. Inhibits CREB activity by phosphorylating and inhibiting activity of TORCs, the CREB- specific coactivators, like CRTC2/TORC2 and CRTC3/TORC3 in response to cAMP signaling (PubMed:[29211348](#)). Acts as a tumor suppressor and plays a key role in p53/TP53-dependent anoikis, a type of apoptosis triggered by cell detachment: required for phosphorylation of p53/TP53 in response to loss of adhesion and is able to suppress metastasis. Part of a sodium-sensing signaling network, probably by mediating phosphorylation of PPME1: following increases in intracellular sodium, SIK1 is activated by CaMK1 and phosphorylates PPME1 subunit of protein phosphatase 2A (PP2A), leading to dephosphorylation of sodium/potassium-transporting ATPase ATP1A1 and subsequent increase activity of ATP1A1. Acts as a regulator of muscle cells by phosphorylating and inhibiting class II histone deacetylases HDAC4 and HDAC5, leading to promote expression of MEF2 target genes in myocytes. Also required during cardiomyogenesis by regulating the exit of cardiomyoblasts from the cell cycle via down-regulation of CDKN1C/p57Kip2. Acts as a regulator of hepatic gluconeogenesis by phosphorylating and repressing the CREB-specific coactivators CRTC1/TORC1 and CRTC2/TORC2, leading to inhibit CREB activity. Also regulates hepatic lipogenesis by phosphorylating and inhibiting SREBF1. In concert with CRTC1/TORC1, regulates the light-induced entrainment of the circadian clock by attenuating PER1 induction; represses CREB- mediated transcription of PER1 by phosphorylating and deactivating CRTC1/TORC1 (By similarity).

Cellular Location

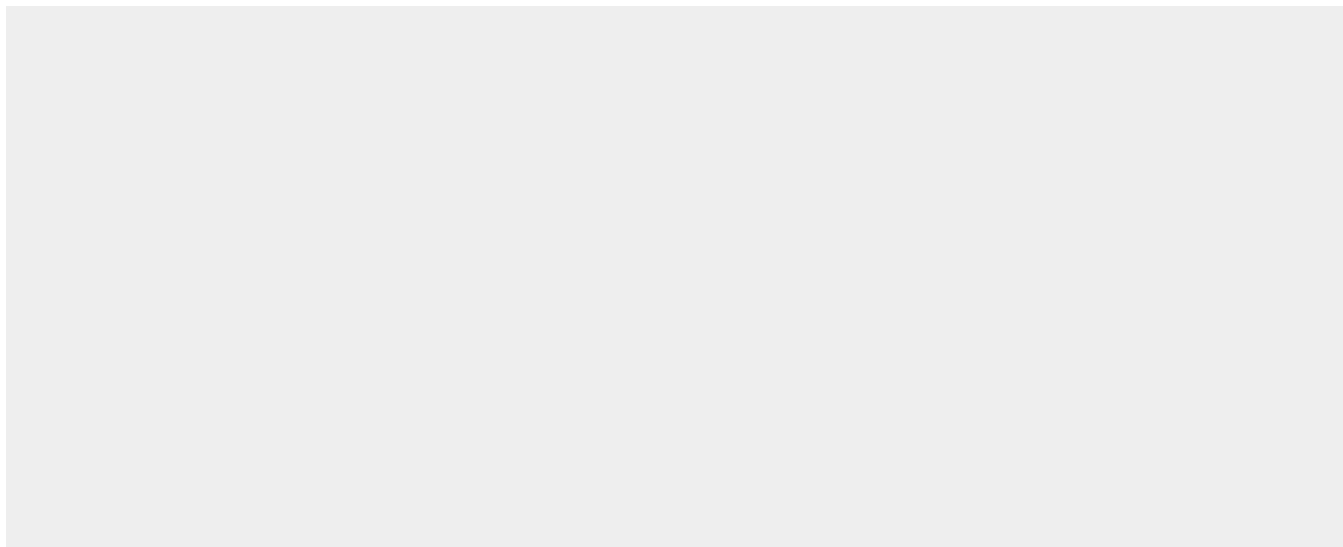
Cytoplasm. Nucleus. Note=Locates to cytoplasm when inactive following cAMP-induced phosphorylation, probably by PKA (PubMed:[29211348](#))

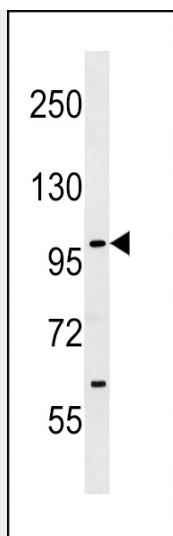
SNF1LK Antibody (C-term) - Protocols

Provided below are standard protocols that you may find useful for product applications.

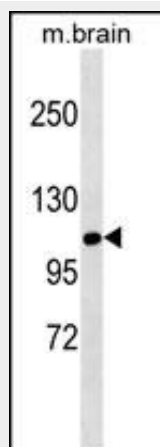
- [Western Blot](#)
- [Blocking Peptides](#)
- [Dot Blot](#)
- [Immunohistochemistry](#)
- [Immunofluorescence](#)
- [Immunoprecipitation](#)
- [Flow Cytometry](#)
- [Cell Culture](#)

SNF1LK Antibody (C-term) - Images

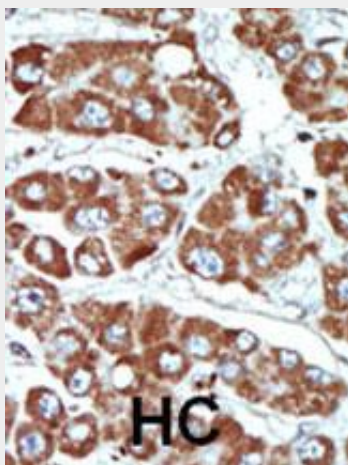




SNF1LK Antibody (C-term) (Cat. #AP8099b) western blot analysis in SK-BR-3 cell line lysates (35ug/lane). This demonstrates the SNF1LK antibody detected the SNF1LK protein (arrow).



SNF1LK Antibody (C-term) (Cat. #AP8099b) western blot analysis in mouse brain tissue lysates (35ug/lane). This demonstrates the SNF1LK antibody detected the SNF1LK protein (arrow).



Formalin-fixed and paraffin-embedded human cancer tissue reacted with the primary antibody, which was peroxidase-conjugated to the secondary antibody, followed by DAB staining. This data demonstrates the use of this antibody for immunohistochemistry; clinical relevance has not been evaluated. BC = breast carcinoma; HC = hepatocarcinoma.

SNF1LK Antibody (C-term) - Background

Protein kinases are enzymes that transfer a phosphate group from a phosphate donor, generally the γ phosphate of ATP, onto an acceptor amino acid in a substrate protein. By this basic mechanism, protein kinases mediate most of the signal transduction in eukaryotic cells, regulating cellular metabolism, transcription, cell cycle progression, cytoskeletal rearrangement and cell movement, apoptosis, and differentiation. With more than 500 gene products, the protein kinase family is one of the largest families of proteins in eukaryotes. The family has been classified in 8 major groups based on sequence comparison of their tyrosine (PTK) or serine/threonine (STK) kinase catalytic domains. The STE group (homologs of yeast Sterile 7, 11, 20 kinases) consists of 50 kinases related to the mitogen-activated protein kinase (MAPK) cascade families (Ste7/MAP2K, Ste11/MAP3K, and Ste20/MAP4K). MAP kinase cascades, consisting of a MAPK and one or more upstream regulatory kinases (MAPKKs) have been best characterized in the yeast pheromone response pathway. Pheromones bind to Ste cell surface receptors and activate yeast MAPK pathway.

SNF1LK Antibody (C-term) - References

Hattori, M., et al., Nature 405(6784):311-319 (2000).

SNF1LK Antibody (C-term) - Citations

- [SIK1 couples LKB1 to p53-dependent anoikis and suppresses metastasis.](#)