

APG1 (ULK1) Antibody (Center)
Purified Rabbit Polyclonal Antibody (Pab)
Catalog # AP8104B**Specification**

APG1 (ULK1) Antibody (Center) - Product Information

Application	WB, IF, E
Primary Accession	O75385
Reactivity	Human
Host	Rabbit
Clonality	Polyclonal
Isotype	Rabbit IgG
Antigen Region	642-672

APG1 (ULK1) Antibody (Center) - Additional Information**Gene ID** 8408**Other Names**

Serine/threonine-protein kinase ULK1, Autophagy-related protein 1 homolog, ATG1, hATG1, Unc-51-like kinase 1, ULK1, KIAA0722

Target/Specificity

This APG1 (ULK1) antibody is generated from rabbits immunized with a KLH conjugated synthetic peptide between 642-672 amino acids from the Central region of human APG1 (ULK1).

Dilution

WB~~1:1000

IF~~1:100

E~~Use at an assay dependent concentration.

Format

Purified polyclonal antibody supplied in PBS with 0.09% (W/V) sodium azide. This antibody is purified through a protein A column, followed by peptide affinity purification.

Storage

Maintain refrigerated at 2-8°C for up to 2 weeks. For long term storage store at -20°C in small aliquots to prevent freeze-thaw cycles.

Precautions

APG1 (ULK1) Antibody (Center) is for research use only and not for use in diagnostic or therapeutic procedures.

APG1 (ULK1) Antibody (Center) - Protein Information**Name** ULK1 {ECO:0000303|PubMed:9693035, ECO:0000312|HGNC:HGNC:12558}**Function** Serine/threonine-protein kinase involved in autophagy in response to starvation

(PubMed:[18936157](#), PubMed:[21460634](#), PubMed:[21795849](#), PubMed:[23524951](#), PubMed:[25040165](#), PubMed:[29487085](#), PubMed:[31123703](#)). Acts upstream of phosphatidylinositol 3-kinase PIK3C3 to regulate the formation of autophagophores, the precursors of autophagosomes (PubMed:[18936157](#), PubMed:[21460634](#), PubMed:[21795849](#), PubMed:[25040165](#)). Part of regulatory feedback loops in autophagy: acts both as a downstream effector and negative regulator of mammalian target of rapamycin complex 1 (mTORC1) via interaction with RPTOR (PubMed:[21795849](#)). Activated via phosphorylation by AMPK and also acts as a regulator of AMPK by mediating phosphorylation of AMPK subunits PRKAA1, PRKAB2 and PRKAG1, leading to negatively regulate AMPK activity (PubMed:[21460634](#)). May phosphorylate ATG13/KIAA0652 and RPTOR; however such data need additional evidences (PubMed:[18936157](#)). Plays a role early in neuronal differentiation and is required for granule cell axon formation (PubMed:[11146101](#)). Also phosphorylates SESN2 and SQSTM1 to regulate autophagy (PubMed:[25040165](#), PubMed:[37306101](#)). Phosphorylates FLCN, promoting autophagy (PubMed:[25126726](#)). Phosphorylates AMBRA1 in response to autophagy induction, releasing AMBRA1 from the cytoskeletal docking site to induce autophagosome nucleation (PubMed:[20921139](#)). Phosphorylates ATG4B, leading to inhibit autophagy by decreasing both proteolytic activation and delipidation activities of ATG4B (PubMed:[28821708](#)).

Cellular Location

Cytoplasm, cytosol. Preautophagosomal structure. Note=Under starvation conditions, is localized to punctate structures primarily representing the isolation membrane that sequesters a portion of the cytoplasm resulting in the formation of an autophagosome.

Tissue Location

Ubiquitously expressed. Detected in the following adult tissues: skeletal muscle, heart, pancreas, brain, placenta, liver, kidney, and lung

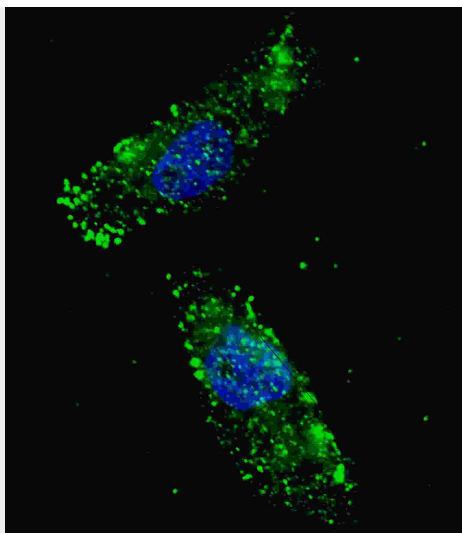
APG1 (ULK1) Antibody (Center) - Protocols

Provided below are standard protocols that you may find useful for product applications.

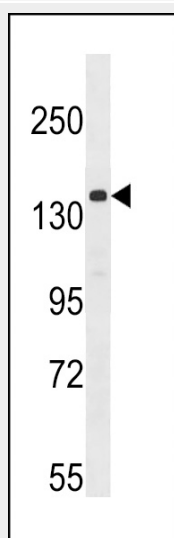
- [Western Blot](#)
- [Blocking Peptides](#)
- [Dot Blot](#)
- [Immunohistochemistry](#)
- [Immunofluorescence](#)
- [Immunoprecipitation](#)
- [Flow Cytometry](#)
- [Cell Culture](#)

APG1 (ULK1) Antibody (Center) - Images





Fluorescent image of U251 cells stained with APG1 (ULK1) (Center) antibody. U251 cells were treated with Chloroquine (50 μ M, 16h), then fixed with 4% PFA (20 min), permeabilized with Triton X-100 (0.2%, 30 min). Cells were then incubated with AP8104b APG1 (ULK1) (Center) primary antibody (1:100, 2 h at room temperature). For secondary antibody, Alexa Fluor® 488 conjugated donkey anti-rabbit antibody (green) was used (1:1000, 1h). Nuclei were counterstained with Hoechst 33342 (blue) (10 μ g/ml, 5 min). APG1 (ULK1) immunoreactivity is localized to autophagic vacuoles in the cytoplasm of U251 cells.



Western blot analysis of anti-ULK1 Pab (Cat. #AP8104b) in A2058 cell lysate. ULK1 (arrow) was detected using purified Pab. Secondary HRP-anti-rabbit was used for signal visualization with chemiluminescence.

APG1 (ULK1) Antibody (Center) - Background

Macroautophagy is the major inducible pathway for the general turnover of cytoplasmic constituents in eukaryotic cells, it is also responsible for the degradation of active cytoplasmic enzymes and organelles during nutrient starvation. Macroautophagy involves the formation of double-membrane bound autophagosomes which enclose the cytoplasmic constituent targeted for degradation in a membrane bound structure, which then fuse with the lysosome (or vacuole) releasing a single-membrane bound autophagic bodies which are then degraded within the lysosome (or vacuole). Two human homologs of the yeast autophagy-specific kinase exist: ULK1(APG1) and ULK2. APG1 plays a critical role in regulating key elements of the autophagy

pathway. APG1 stimulates autophagy, leading to autophagy-dependent restriction of cell growth and ultimately cell apoptosis at high levels of activity, and is a negative regulator of mTOR signaling.

APG1 (ULK1) Antibody (Center) - References

References for protein:

- 1.Scott, R., et al., Current Biology 17: 1-11 (2007).
- 2.Kuroyanagi, H., et al., Genomics 51(1):76-85 (1998).

References for U251 cell line:

1. Westermarck B.; Pontén J.; Hugosson R. (1973).” Determinants for the establishment of permanent tissue culture lines from human gliomas”. Acta Pathol Microbiol Scand A. 81:791-805. [PMID: 4359449].
2. Pontén, J.,Westermarck B. (1978).” Properties of Human Malignant Glioma Cells in Vitro”. Medical Biology 56: 184-193.[PMID: 359950].
3. Geng Y.;Kohli L.; Klocke B.J.; Roth K.A.(2010). “Chloroquine-induced autophagic vacuole accumulation and cell death in glioma cells is p53 independent”. Neuro Oncol. 12(5): 473-481.[PMID: 20406898].

APG1 (ULK1) Antibody (Center) - Citations

- [Machine learning with autophagy-related proteins for discriminating renal cell carcinoma subtypes](#)
- [Intensive expression of UNC-51-like kinase 1 is a novel biomarker of poor prognosis in patients with esophageal squamous cell carcinoma.](#)