

**ITPKB Antibody (N-term)**  
**Purified Rabbit Polyclonal Antibody (Pab)**  
**Catalog # AP8167a****Specification**

---

**ITPKB Antibody (N-term) - Product Information**

Application	WB, IHC-P, FC,E
Primary Accession	<a href="#">P27987</a>
Other Accession	<a href="#">NP_002212</a>
Reactivity	Human
Host	Rabbit
Clonality	Polyclonal
Isotype	Rabbit IgG
Calculated MW	102376
Antigen Region	23-54

**ITPKB Antibody (N-term) - Additional Information****Gene ID** 3707**Other Names**

Inositol-trisphosphate 3-kinase B, Inositol 1, 5-trisphosphate 3-kinase B, IP3 3-kinase B, IP3K B, InsP 3-kinase B, ITPKB

**Target/Specificity**

This ITPKB antibody is generated from rabbits immunized with a KLH conjugated synthetic peptide between 23-54 amino acids from the N-terminal region of human ITPKB.

**Dilution**WB~~1:1000  
IHC-P~~1:10~50  
FC~~1:10~50**Format**

Purified polyclonal antibody supplied in PBS with 0.09% (W/V) sodium azide. This antibody is prepared by Saturated Ammonium Sulfate (SAS) precipitation followed by dialysis against PBS.

**Storage**

Maintain refrigerated at 2-8°C for up to 2 weeks. For long term storage store at -20°C in small aliquots to prevent freeze-thaw cycles.

**Precautions**

ITPKB Antibody (N-term) is for research use only and not for use in diagnostic or therapeutic procedures.

**ITPKB Antibody (N-term) - Protein Information****Name** ITPKB ([HGNC:6179](#))

**Function** Catalyzes the phosphorylation of 1D-myo-inositol 1,4,5- trisphosphate (InsP3) into 1D-myo-inositol 1,3,4,5-tetrakisphosphate and participates to the regulation of calcium homeostasis.

**Cellular Location**

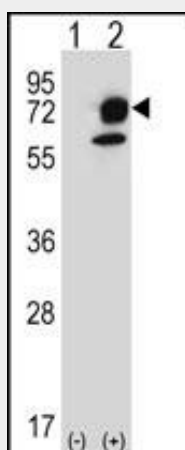
Cytoplasm, cytoskeleton. Cytoplasm Endoplasmic reticulum

**ITPKB Antibody (N-term) - Protocols**

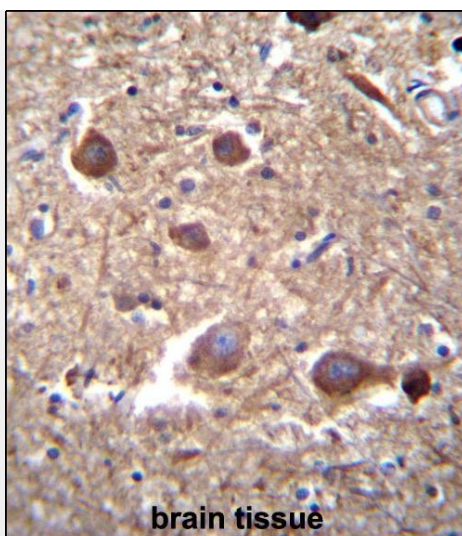
Provided below are standard protocols that you may find useful for product applications.

- [Western Blot](#)
- [Blocking Peptides](#)
- [Dot Blot](#)
- [Immunohistochemistry](#)
- [Immunofluorescence](#)
- [Immunoprecipitation](#)
- [Flow Cytometry](#)
- [Cell Culture](#)

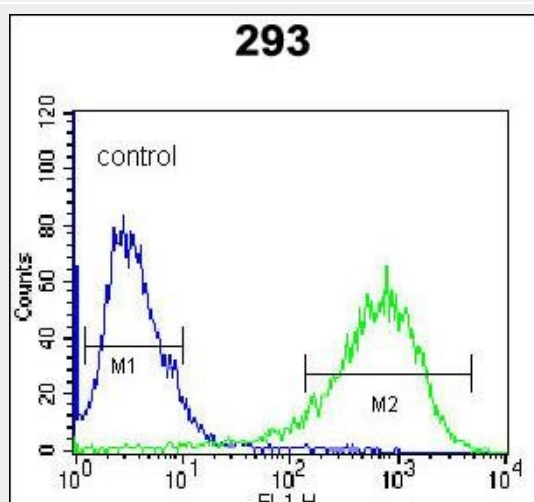
**ITPKB Antibody (N-term) - Images**



Western blot analysis of ITPKB (arrow) using rabbit polyclonal ITPKB Antibody (R38) (Cat. #AP8167a). 293 cell lysates (2 ug/lane) either nontransfected (Lane 1) or transiently transfected (Lane 2) with the ITPKB gene.



ITPKB Antibody (N-term) (Cat. #AP8167a) immunohistochemistry analysis in formalin fixed and paraffin embedded human brain tissue followed by peroxidase conjugation of the secondary antibody and DAB staining. This data demonstrates the use of ITPKB Antibody (N-term) for immunohistochemistry. Clinical relevance has not been evaluated.



ITPKB Antibody (N-term) (Cat. #AP8167a) flow cytometric analysis of 293 cells (right histogram) compared to a negative control cell (left histogram). FITC-conjugated goat-anti-rabbit secondary antibodies were used for the analysis.

#### ITPKB Antibody (N-term) - Background

ITPKB regulates inositol phosphate metabolism by phosphorylation of second messenger inositol 1,4,5-trisphosphate to Ins(1,3,4,5)P<sub>4</sub>. The activity of this encoded protein is responsible for regulating the levels of a large number of inositol polyphosphates that are important in cellular signaling. Both calcium/calmodulin and protein phosphorylation mechanisms control its activity.

#### ITPKB Antibody (N-term) - References

- Dewaste, V., et al., Biochem. Biophys. Res. Commun. 291(2):400-405 (2002).
- Woodring, P.J., et al., J. Biol. Chem. 272(48):30447-30454 (1997).
- Erneux, C., et al., Genomics 14(2):546-547 (1992).
- Takazawa, K., et al., Biochem. J. 272(1):107-112 (1990).
- Takazawa, K., et al., Biochem. J. 278 (PT 3), 883-886 (1991) ( ): ( ).