

**BAIAP1 (MAGI1)Antibody (C-term)**  
**Purified Rabbit Polyclonal Antibody (Pab)**  
**Catalog # AP8173A****Specification**

---

**BAIAP1 (MAGI1)Antibody (C-term) - Product Information**

Application	IHC-P, WB,E
Primary Accession	<a href="#">O96QZ7-3</a> and <a href="#">O96QZ7-4</a>
Other Accession	<a href="#">O4L1J4</a> , <a href="#">NP_004733</a>
Reactivity	Human
Predicted	Rat
Host	Rabbit
Clonality	Polyclonal
Isotype	Rabbit IgG
Antigen Region	1227-1256

**BAIAP1 (MAGI1)Antibody (C-term) - Additional Information****Other Names**

Membrane-associated guanylate kinase, WW and PDZ domain-containing protein 1, Atrophin-1-interacting protein 3, AIP-3, BAI1-associated protein 1, BAP-1, Membrane-associated guanylate kinase inverted 1, MAGI-1, Trinucleotide repeat-containing gene 19 protein, WW domain-containing protein 3, WWP3, MAGI1, AIP3, BAIAP1, BAP1, TNRC19

**Target/Specificity**

This BAIAP1 (MAGI1) antibody is generated from rabbits immunized with a KLH conjugated synthetic peptide between 1227-1256 amino acids from the C-terminal region of human BAIAP1 (MAGI1).

**Dilution**

IHC-P~~1:50~100

WB~~1:1000

E~~Use at an assay dependent concentration.

**Format**

Purified polyclonal antibody supplied in PBS with 0.09% (W/V) sodium azide. This antibody is prepared by Saturated Ammonium Sulfate (SAS) precipitation followed by dialysis against PBS.

**Storage**

Maintain refrigerated at 2-8°C for up to 2 weeks. For long term storage store at -20°C in small aliquots to prevent freeze-thaw cycles.

**Precautions**

BAIAP1 (MAGI1)Antibody (C-term) is for research use only and not for use in diagnostic or therapeutic procedures.

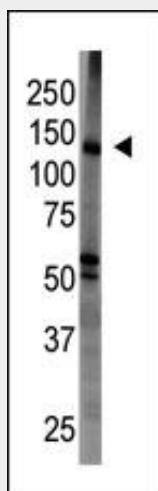
**BAIAP1 (MAGI1)Antibody (C-term) - Protein Information**

## **BAIAP1 (MAGI1)Antibody (C-term) - Protocols**

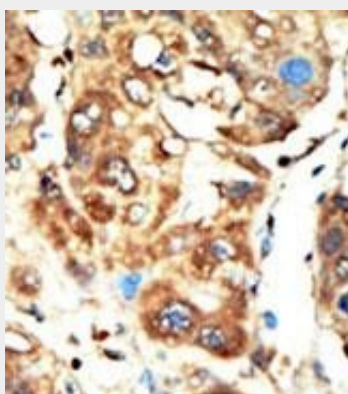
Provided below are standard protocols that you may find useful for product applications.

- [Western Blot](#)
- [Blocking Peptides](#)
- [Dot Blot](#)
- [Immunohistochemistry](#)
- [Immunofluorescence](#)
- [Immunoprecipitation](#)
- [Flow Cytometry](#)
- [Cell Culture](#)

## **BAIAP1 (MAGI1)Antibody (C-term) - Images**



The anti-BAIAP1 Pab (Cat. #AP8173a) is used in Western blot to detect BAIAP1 in mouse brain tissue lysate.



Formalin-fixed and paraffin-embedded human cancer tissue reacted with the primary antibody, which was peroxidase-conjugated to the secondary antibody, followed by AEC staining. This data demonstrates the use of this antibody for immunohistochemistry; clinical relevance has not been evaluated. BC = breast carcinoma; HC = hepatocarcinoma.

## **BAIAP1 (MAGI1)Antibody (C-term) - Background**

BAIAP1 is a member of the membrane-associated guanylate kinase homologue (MAGUK) family.

Characterized by two WW domains, a guanylate kinase domain, and five PDZ domains, this protein interacts with the cytoplasmic region of BAI1. Together, these proteins may play a role in cell adhesion and signal transduction.

#### **BAIAP1 (MAGI1)Antibody (C-term) - References**

- Patrie, K.M., et al., J. Biol. Chem. 277(33):30183-30190 (2002).  
Shiratsuchi, T., et al., Biochem. Biophys. Res. Commun. 247(3):597-604 (1998).  
Wood, J.D., et al., Mol. Cell. Neurosci. 11(3):149-160 (1998).  
Margolis, R.L., et al., Hum. Genet. 100(1):114-122 (1997).  
Pirozzi, G., et al., J. Biol. Chem. 272(23):14611-14616 (1997).