

Guanylyl Cyclase alpha 2 (GUCY1A2) Antibody (C-term)
Purified Rabbit Polyclonal Antibody (Pab)
Catalog # AP8176b**Specification**

Guanylyl Cyclase alpha 2 (GUCY1A2) Antibody (C-term) - Product Information

Application	IHC-P, WB,E
Primary Accession	P33402
Other Accession	O9WVI4 , NP_000846
Reactivity	Human
Predicted	Rat
Host	Rabbit
Clonality	Polyclonal
Isotype	Rabbit IgG
Calculated MW	81750
Antigen Region	699-732

Guanylyl Cyclase alpha 2 (GUCY1A2) Antibody (C-term) - Additional Information**Gene ID** 2977**Other Names**

Guanylate cyclase soluble subunit alpha-2, GCS-alpha-2, GUCY1A2, GUC1A2, GUCSA2

Target/Specificity

This Guanylyl Cyclase alpha 2 (GUCY1A2) antibody is generated from rabbits immunized with a KLH conjugated synthetic peptide between 699-732 amino acids from the C-terminal region of human Guanylyl Cyclase alpha 2 (GUCY1A2).

Dilution

IHC-P~~1:50~100

WB~~1:1000

E~~Use at an assay dependent concentration.

Format

Purified polyclonal antibody supplied in PBS with 0.09% (W/V) sodium azide. This antibody is prepared by Saturated Ammonium Sulfate (SAS) precipitation followed by dialysis against PBS.

Storage

Maintain refrigerated at 2-8°C for up to 2 weeks. For long term storage store at -20°C in small aliquots to prevent freeze-thaw cycles.

Precautions

Guanylyl Cyclase alpha 2 (GUCY1A2) Antibody (C-term) is for research use only and not for use in diagnostic or therapeutic procedures.

Guanylyl Cyclase alpha 2 (GUCY1A2) Antibody (C-term) - Protein Information

Name GUCY1A2

Synonyms GUC1A2, GUCSA2

Function Has guanylyl cyclase on binding to the beta-1 subunit.

Cellular Location

Cytoplasm.

Tissue Location

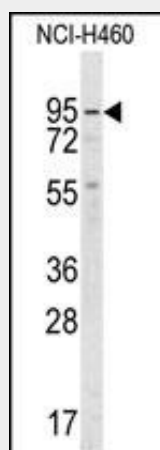
Isoform 1 is expressed in fetal brain, liver, colon, endothelium and testis. Isoform 2 is expressed only in liver, colon and endothelium

Guanylyl Cyclase alpha 2 (GUCY1A2) Antibody (C-term) - Protocols

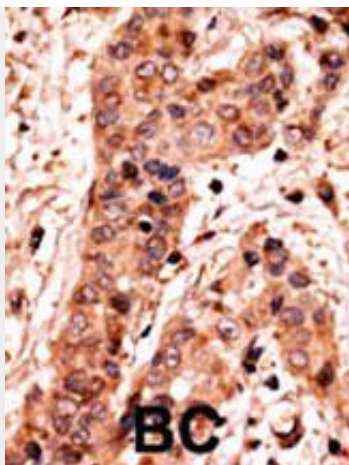
Provided below are standard protocols that you may find useful for product applications.

- [Western Blot](#)
- [Blocking Peptides](#)
- [Dot Blot](#)
- [Immunohistochemistry](#)
- [Immunofluorescence](#)
- [Immunoprecipitation](#)
- [Flow Cytometry](#)
- [Cell Culture](#)

Guanylyl Cyclase alpha 2 (GUCY1A2) Antibody (C-term) - Images



Western blot analysis of anti-GUCY1A2 Antibody (C-term) (Cat.#AP8176b) in NCI-H460 cell line lysates (35ug/lane). GUCY1A2 (arrow) was detected using the purified Pab.



Formalin-fixed and paraffin-embedded human cancer tissue reacted with the primary antibody, which was peroxidase-conjugated to the secondary antibody, followed by AEC staining. This data demonstrates the use of this antibody for immunohistochemistry; clinical relevance has not been evaluated. BC = breast carcinoma; HC = hepatocarcinoma.

Guanylyl Cyclase alpha 2 (GUCY1A2) Antibody (C-term) - Background

Soluble guanylate cyclase (sGC), a heterodimeric protein consisting of an alpha and a beta subunit, catalyzes the conversion of GTP to the second messenger cGMP and functions as the main receptor for nitric oxide and nitrovasodilator drugs.

Guanylyl Cyclase alpha 2 (GUCY1A2) Antibody (C-term) - References

- Baba, H., et al., Neuroreport 15(4):677-680 (2004).
Bellamy, T.C., et al., Proc. Natl. Acad. Sci. U.S.A. 99(1):507-510 (2002).
Russwurm, M., et al., J. Biol. Chem. 276(48):44647-44652 (2001).
Bamberger, A.M., et al., J. Clin. Endocrinol. Metab. 86(2):909-912 (2001).
Budworth, J., et al., Biochem. Biophys. Res. Commun. 263(3):696-701 (1999).