

PTP epsilon Antibody (C-term)
Purified Rabbit Polyclonal Antibody (Pab)
Catalog # AP8416a

Specification

PTP epsilon Antibody (C-term) - Product Information

Application	WB,E
Primary Accession	P23469
Reactivity	Human
Host	Rabbit
Clonality	Polyclonal
Isotype	Rabbit IgG
Calculated MW	80642
Antigen Region	558-589

PTP epsilon Antibody (C-term) - Additional Information

Gene ID 5791

Other Names

Receptor-type tyrosine-protein phosphatase epsilon, Protein-tyrosine phosphatase epsilon, R-PTP-epsilon, PTPRE

Target/Specificity

This PTP epsilon antibody is generated from rabbits immunized with a KLH conjugated synthetic peptide between 558-589 amino acids from the C-terminal region of human PTP epsilon.

Dilution

WB~~1:1000

E~~Use at an assay dependent concentration.

Format

Purified polyclonal antibody supplied in PBS with 0.09% (W/V) sodium azide. This antibody is prepared by Saturated Ammonium Sulfate (SAS) precipitation followed by dialysis against PBS.

Storage

Maintain refrigerated at 2-8°C for up to 2 weeks. For long term storage store at -20°C in small aliquots to prevent freeze-thaw cycles.

Precautions

PTP epsilon Antibody (C-term) is for research use only and not for use in diagnostic or therapeutic procedures.

PTP epsilon Antibody (C-term) - Protein Information

Name PTPRE

Function Isoform 1 plays a critical role in signaling transduction pathways and phosphoprotein

network topology in red blood cells. May play a role in osteoclast formation and function (By similarity).

Cellular Location

[Isoform 1]: Cell membrane; Single-pass type I membrane protein [Isoform 3]: Cytoplasm.

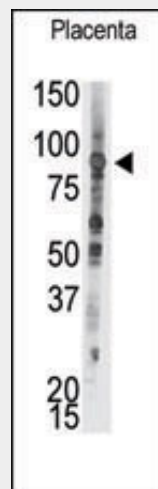
Tissue Location

Expressed in giant cell tumor (osteoclastoma rich in multinucleated osteoclastic cells).

PTP epsilon Antibody (C-term) - Protocols

Provided below are standard protocols that you may find useful for product applications.

- [Western Blot](#)
- [Blocking Peptides](#)
- [Dot Blot](#)
- [Immunohistochemistry](#)
- [Immunofluorescence](#)
- [Immunoprecipitation](#)
- [Flow Cytometry](#)
- [Cell Culture](#)

PTP epsilon Antibody (C-term) - Images

Abgent invites you to submit your data (IHC, IF, IP, WB, FC) using this product. We will award you credits, 50% of the cost you paid, for future purchases. For availability of this promotion please contact us at tech@abgent.com.

PTP epsilon Antibody (C-term) - Background

PTPepsilon is a member of the protein tyrosine phosphatase (PTP) family. PTPs are known to be signaling molecules that regulate a variety of cellular processes including cell growth, differentiation, mitotic cycle, and oncogenic transformation. Two alternatively spliced transcript variants of the gene have been reported, one of which encodes a receptor-type PTP that possesses a short extracellular domain, a single transmembrane region, and two tandem intracytoplasmic catalytic domains; Another one encodes a PTP that contains a distinct hydrophilic N-terminus, and thus represents a nonreceptor-type isoform of this PTP. Studies of the similar gene in mice suggested the regulatory roles of this PTP in RAS related signal transduction pathways, cytokines induced SATA signaling, as well as the activation of voltage-gated K⁺ channels.

PTP epsilon Antibody (C-term) - References

Toledano-Katchalski, H., et al., Mol. Cell. Biol. 23(15):5460-5471 (2003).
Blanchetot, C., et al., J. Biol. Chem. 277(49):47263-47269 (2002).
Wabakken, T., et al., Scand. J. Immunol. 56(3):276-285 (2002).
Wabakken, T., et al., Scand. J. Immunol. 56(2):195-203 (2002).
Tanuma, N., et al., J. Biol. Chem. 275(36):28216-28221 (2000).

PTP epsilon Antibody (C-term) - Citations

- [Apoptosis of estrogen-receptor negative breast cancer and colon cancer cell lines by PTP alpha and src RNAi.](#)