

PTPD1 Antibody (Center)
Purified Rabbit Polyclonal Antibody (Pab)
Catalog # AP8424a

Specification

PTPD1 Antibody (Center) - Product Information

Application	IHC-P, WB,E
Primary Accession	Q16825
Reactivity	Human
Host	Rabbit
Clonality	Polyclonal
Isotype	Rabbit IgG
Antigen Region	751-780

PTPD1 Antibody (Center) - Additional Information

Gene ID 11099

Other Names

Tyrosine-protein phosphatase non-receptor type 21, Protein-tyrosine phosphatase D1, PTPN21, PTPD1

Target/Specificity

This PTPD1 antibody is generated from rabbits immunized with a KLH conjugated synthetic peptide between 751-780 amino acids from the Central region of human PTPD1.

Dilution

IHC-P~~1:10~50

WB~~1:1000

E~~Use at an assay dependent concentration.

Format

Purified polyclonal antibody supplied in PBS with 0.09% (W/V) sodium azide. This antibody is prepared by Saturated Ammonium Sulfate (SAS) precipitation followed by dialysis against PBS.

Storage

Maintain refrigerated at 2-8°C for up to 2 weeks. For long term storage store at -20°C in small aliquots to prevent freeze-thaw cycles.

Precautions

PTPD1 Antibody (Center) is for research use only and not for use in diagnostic or therapeutic procedures.

PTPD1 Antibody (Center) - Protein Information

Name PTPN21

Synonyms PTPD1

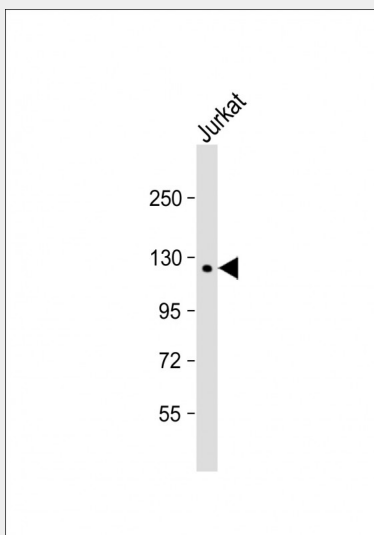
Cellular Location

Cytoplasm, cytoskeleton.

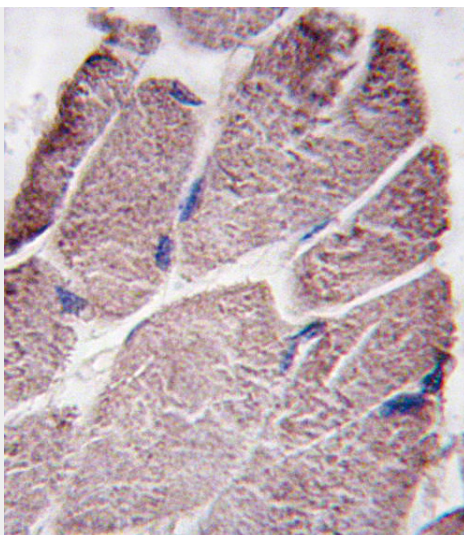
PTPD1 Antibody (Center) - Protocols

Provided below are standard protocols that you may find useful for product applications.

- [Western Blot](#)
- [Blocking Peptides](#)
- [Dot Blot](#)
- [Immunohistochemistry](#)
- [Immunofluorescence](#)
- [Immunoprecipitation](#)
- [Flow Cytometry](#)
- [Cell Culture](#)

PTPD1 Antibody (Center) - Images

Anti-PTPD1 Antibody (Center) at 1:1000 dilution + Jurkat whole cell lysate Lysates/proteins at 20 μ g per lane. Secondary Goat Anti-Rabbit IgG, (H+L), Peroxidase conjugated at 1/10000 dilution. Predicted band size : 133 kDa Blocking/Dilution buffer: 5% NFDM/TBST.



Formalin-fixed and paraffin-embedded human skeletal muscle tissue reacted with PTPD1 antibody (Center), which was peroxidase-conjugated to the secondary antibody, followed by DAB staining. This data demonstrates the use of this antibody for immunohistochemistry; clinical relevance has not been evaluated.

PTPD1 Antibody (Center) - Background

PTPD1 is a member of the protein tyrosine phosphatase (PTP) family. PTPs are known to be signaling molecules that regulate a variety of cellular processes including cell growth, differentiation, mitotic cycle, and oncogenic transformation. This PTP contains an N-terminal domain, similar to cytoskeletal-associated proteins including band 4.1, ezrin, merlin, and radixin. This PTP was shown to specially interact with BMX/ETK, a member of Tec tyrosine kinase family characterized by a multimodular structures including PH, SH3, and SH2 domains. The interaction of this PTP with BMX kinase was found to increase the activation of STAT3, but not STAT2 kinase. Studies of the similar gene in mice suggested the possible roles of this PTP in liver regeneration and spermatogenesis.

PTPD1 Antibody (Center) - References

Jui, H.Y., et al., J. Biol. Chem. 275(52):41124-41132 (2000).
Tokuchi, H., et al., Int J Urol 6(11):572-577 (1999).
Higashitsuji, H., et al., Oncogene 10(2):407-414 (1995).
Moller, N.P., et al., Proc. Natl. Acad. Sci. U.S.A. 91(16):7477-7481 (1994).

PTPD1 Antibody (Center) - Citations

- [BMX Negatively Regulates BAK Function. Thereby Increasing Apoptotic Resistance to Chemotherapeutic Drugs.](#)