

DUSP8 Antibody (N-term)
Purified Rabbit Polyclonal Antibody (Pab)
Catalog # AP8451a

Specification

DUSP8 Antibody (N-term) - Product Information

Application	WB, IHC-P,E
Primary Accession	O13202
Other Accession	O09112 , NP_004411
Reactivity	Human, Mouse
Host	Rabbit
Clonality	Polyclonal
Isotype	Rabbit IgG
Calculated MW	65827
Antigen Region	1-30

DUSP8 Antibody (N-term) - Additional Information

Gene ID 1850

Other Names

Dual specificity protein phosphatase 8, Dual specificity protein phosphatase hVH-5, DUSP8, C11orf81, VH5

Target/Specificity

This DUSP8 antibody is generated from rabbits immunized with a KLH conjugated synthetic peptide between 1-30 amino acids from the N-terminal region of human DUSP8.

Dilution

WB~~1:1000
IHC-P~~1:50~100

Format

Purified polyclonal antibody supplied in PBS with 0.09% (W/V) sodium azide. This antibody is prepared by Saturated Ammonium Sulfate (SAS) precipitation followed by dialysis against PBS.

Storage

Maintain refrigerated at 2-8°C for up to 2 weeks. For long term storage store at -20°C in small aliquots to prevent freeze-thaw cycles.

Precautions

DUSP8 Antibody (N-term) is for research use only and not for use in diagnostic or therapeutic procedures.

DUSP8 Antibody (N-term) - Protein Information

Name DUSP8

Synonyms C11orf81, VH5

Function Has phosphatase activity with synthetic phosphatase substrates and negatively regulates mitogen-activated protein kinase activity, presumably by catalysing their dephosphorylation. Expected to display protein phosphatase activity toward phosphotyrosine, phosphoserine and phosphothreonine residues.

Cellular Location

Cytoplasm {ECO:0000250|UniProtKB:O09112}. Nucleus {ECO:0000250|UniProtKB:O09112}

Tissue Location

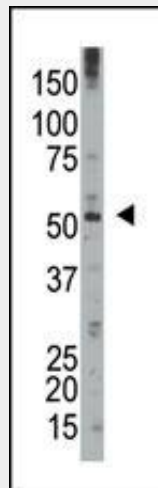
Abundant in brain, heart and skeletal muscle.

DUSP8 Antibody (N-term) - Protocols

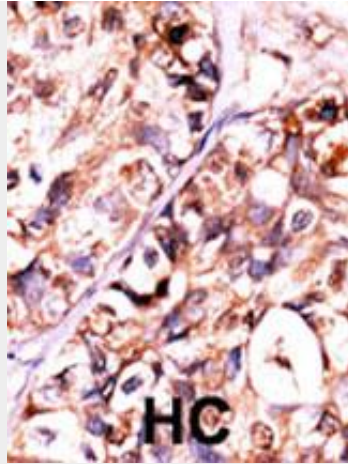
Provided below are standard protocols that you may find useful for product applications.

- [Western Blot](#)
- [Blocking Peptides](#)
- [Dot Blot](#)
- [Immunohistochemistry](#)
- [Immunofluorescence](#)
- [Immunoprecipitation](#)
- [Flow Cytometry](#)
- [Cell Culture](#)

DUSP8 Antibody (N-term) - Images



The anti-DUSP8 Pab (Cat. #AP8451a) is used in Western blot to detect DUSP8 in mouse brain cell lysate.



Formalin-fixed and paraffin-embedded human cancer tissue reacted with the primary antibody, which was peroxidase-conjugated to the secondary antibody, followed by AEC staining. This data demonstrates the use of this antibody for immunohistochemistry; clinical relevance has not been evaluated. BC = breast carcinoma; HC = hepatocarcinoma.

DUSP8 Antibody (N-term) - Background

DUSP8 is a member of the dual specificity protein phosphatase subfamily. These phosphatases inactivate their target kinases by dephosphorylating both the phosphoserine/threonine and phosphotyrosine residues. They negatively regulate members of the mitogen-activated protein (MAP) kinase superfamily (MAPK/ERK, SAPK/JNK, p38), which is associated with cellular proliferation and differentiation. Different members of the family of dual specificity phosphatases show distinct substrate specificities for various MAP kinases, different tissue distribution and subcellular localization, and different modes of inducibility of their expression by extracellular stimuli. DUSP8 inactivates SAPK/JNK and p38, is expressed predominantly in the adult brain, heart, and skeletal muscle, is localized in the cytoplasm, and is induced by nerve growth factor and insulin.

DUSP8 Antibody (N-term) - References

Berger, I.R., et al., *Cancer Genet. Cytogenet.* 159(2):155-159 (2005). Hink, R.L., et al., *Genomics* 8(3):305-312 (2003). Nesbit, M.A., et al., *Genomics* 42(2):284-294 (1997). Martell, K.J., et al., *J. Neurochem.* 65(4):1823-1833 (1995).

DUSP8 Antibody (N-term) - Citations

- [Prevention of JNK phosphorylation as a mechanism for rosiglitazone in neuroprotection after transient cerebral ischemia: activation of dual specificity phosphatase.](#)