

DUSP13-L184 Antibody (C-term)
Purified Rabbit Polyclonal Antibody (Pab)
Catalog # AP8455b**Specification**

DUSP13-L184 Antibody (C-term) - Product Information

| | |
|-------------------|------------------------|
| Application | IHC-P, WB,E |
| Primary Accession | Q9UII6 |
| Reactivity | Human |
| Host | Rabbit |
| Clonality | Polyclonal |
| Isotype | Rabbit IgG |
| Antigen Region | 169-198 |

DUSP13-L184 Antibody (C-term) - Additional Information**Gene ID** 51207**Other Names**

Dual specificity protein phosphatase 13 isoform B, DUSP13B, Dual specificity phosphatase SKRP4, Testis- and skeletal-muscle-specific DSP, DUSP13, DUSP13B, TMDP

Target/Specificity

This DUSP13-L184 antibody is generated from rabbits immunized with a KLH conjugated synthetic peptide between 169-198 amino acids from the C-terminal region of human DUSP13-L184.

Dilution

IHC-P~~1:50~100

WB~~1:1000

E~~Use at an assay dependent concentration.

Format

Purified polyclonal antibody supplied in PBS with 0.09% (W/V) sodium azide. This antibody is prepared by Saturated Ammonium Sulfate (SAS) precipitation followed by dialysis against PBS.

Storage

Maintain refrigerated at 2-8°C for up to 2 weeks. For long term storage store at -20°C in small aliquots to prevent freeze-thaw cycles.

Precautions

DUSP13-L184 Antibody (C-term) is for research use only and not for use in diagnostic or therapeutic procedures.

DUSP13-L184 Antibody (C-term) - Protein Information**Name** DUSP13B ([HGNC:19681](#))**Synonyms** DUSP13, SKRP4, TMDP

Function Dual specificity phosphatase that dephosphorylates MAPK8/JNK and MAPK14/p38, but not MAPK1/ERK2, in vitro (PubMed:[21360282](#)). Exhibits intrinsic phosphatase activity towards both phospho- seryl/threonyl and -tyrosyl residues, with similar specific activities in vitro (PubMed:[10585869](#)).

Tissue Location

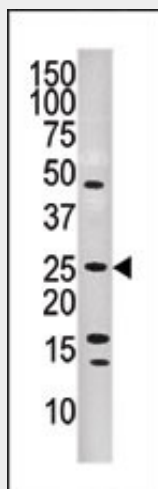
Highly expressed in the testis (at protein level) (PubMed:10585869, PubMed:15252030). Also found in the skeletal muscle (PubMed:15252030).

DUSP13-L184 Antibody (C-term) - Protocols

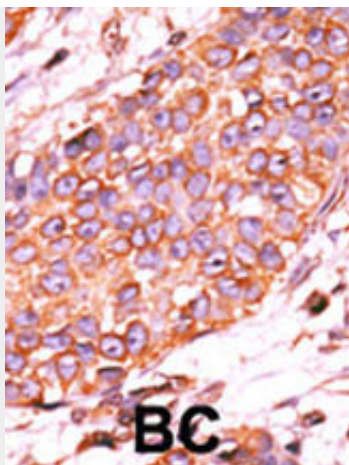
Provided below are standard protocols that you may find useful for product applications.

- [Western Blot](#)
- [Blocking Peptides](#)
- [Dot Blot](#)
- [Immunohistochemistry](#)
- [Immunofluorescence](#)
- [Immunoprecipitation](#)
- [Flow Cytometry](#)
- [Cell Culture](#)

DUSP13-L184 Antibody (C-term) - Images



The anti-DUSP13 Pab (Cat. #AP8455b) is used in Western blot to detect DUSP13 in human CEM lysate.



Formalin-fixed and paraffin-embedded human cancer tissue reacted with the primary antibody, which was peroxidase-conjugated to the secondary antibody, followed by AEC staining. This data demonstrates the use of this antibody for immunohistochemistry; clinical relevance has not been evaluated. BC = breast carcinoma; HC = hepatocarcinoma.

DUSP13-L184 Antibody (C-term) - Background

Dual-specificity phosphatases, a subfamily of protein-tyrosine phosphatases, play important roles in signal transduction, cell cycle progression, and tumor suppression. The cDNA encoding a novel phosphatase, PIR1, phosphatase that interacts with RNA/RNP complex 1. Sequence analysis revealed that the predicted 329-amino acid protein has homology to several dual-specificity phosphatases and contains 2 stretches of arginine-rich sequence similar to those found in some RNA-binding proteins. In vitro, recombinant protein displays protein-tyrosine phosphatase activity and binds directly to RNA.

DUSP13-L184 Antibody (C-term) - References

Nakamura K., Shima H., Watanabe M., Haneji T., Kikuchi K. Biochem. J. 344:819-825(1999).
Deloukas et al. Nature 429:375-381(2004). Strausberg et al. Proc. Natl. Acad. Sci. U.S.A. 99:16899-16903(2002).

DUSP13-L184 Antibody (C-term) - Citations

- [Regulation of MITF stability by the USP13 deubiquitinase.](#)