

DUSP15 Antibody (N-term)
Purified Rabbit Polyclonal Antibody (Pab)
Catalog # AP8457a**Specification**

DUSP15 Antibody (N-term) - Product Information

Application	IHC-P, WB,E
Primary Accession	Q9H1R2
Other Accession	Q8R4V2 , Q6PGN7
Reactivity	Human
Predicted	Mouse
Host	Rabbit
Clonality	Polyclonal
Isotype	Rabbit IgG
Calculated MW	31882
Antigen Region	17-44

DUSP15 Antibody (N-term) - Additional Information**Gene ID** 128853**Other Names**

Dual specificity protein phosphatase 15, VH1-related member Y, Vaccinia virus VH1-related dual-specific protein phosphatase Y, DUSP15, C20orf57, VHY

Target/Specificity

This DUSP15 antibody is generated from rabbits immunized with a KLH conjugated synthetic peptide between 17-44 amino acids from the N-terminal region of human DUSP15.

Dilution

IHC-P~~1:50~100

WB~~1:1000

E~~Use at an assay dependent concentration.

Format

Purified polyclonal antibody supplied in PBS with 0.09% (W/V) sodium azide. This antibody is prepared by Saturated Ammonium Sulfate (SAS) precipitation followed by dialysis against PBS.

Storage

Maintain refrigerated at 2-8°C for up to 2 weeks. For long term storage store at -20°C in small aliquots to prevent freeze-thaw cycles.

Precautions

DUSP15 Antibody (N-term) is for research use only and not for use in diagnostic or therapeutic procedures.

DUSP15 Antibody (N-term) - Protein Information

Name DUSP15 ([HGNC:16236](#))

Function May dephosphorylate MAPK13, ATF2, ERBB3, PDGFRB and SNX6 (PubMed:[22792334](#)).

Cellular Location
Cytoplasm.

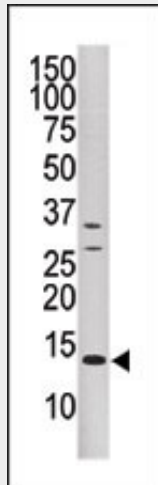
Tissue Location
Highly expressed in testis (PubMed:15138252). Expressed in brain; up-regulated in patients with multiple sclerosis gray matter lesions (PubMed:22792334).

DUSP15 Antibody (N-term) - Protocols

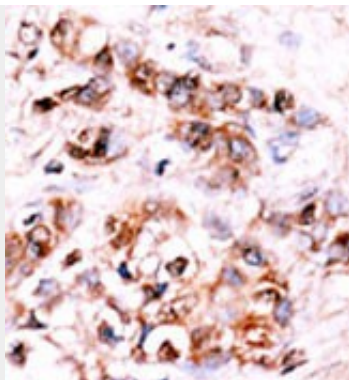
Provided below are standard protocols that you may find useful for product applications.

- [Western Blot](#)
- [Blocking Peptides](#)
- [Dot Blot](#)
- [Immunohistochemistry](#)
- [Immunofluorescence](#)
- [Immunoprecipitation](#)
- [Flow Cytometry](#)
- [Cell Culture](#)

DUSP15 Antibody (N-term) - Images



Western blot analysis of anti-DUSP15 Pab (Cat. #AP8457a) in CEM cell line tissue lysate (35ug/lane). DUSP15 (arrow) was detected using the purified Pab.



Formalin-fixed and paraffin-embedded human cancer tissue reacted with the primary antibody, which was peroxidase-conjugated to the secondary antibody, followed by AEC staining. This data demonstrates the use of this antibody for immunohistochemistry; clinical relevance has not been evaluated. BC = breast carcinoma; HC = hepatocarcinoma.

DUSP15 Antibody (N-term) - Background

DUSP15 belongs to the non-receptor class of the protein-tyrosine phosphatase family. This protein has both protein-tyrosine phosphatase activity and serine/threonine-specific phosphatase activity, and therefore is known as a dual specificity phosphatase.

DUSP15 Antibody (N-term) - References

Alonso, A., et al., J. Biol. Chem. 279(31):32586-32591 (2004).