

PPM1F Antibody (N-term)
Purified Rabbit Polyclonal Antibody (Pab)
Catalog # AP8459a

Specification

PPM1F Antibody (N-term) - Product Information

Application	IHC-P, WB,E
Primary Accession	P49593
Reactivity	Human
Host	Rabbit
Clonality	Polyclonal
Isotype	Rabbit IgG
Calculated MW	49831
Antigen Region	11-40

PPM1F Antibody (N-term) - Additional Information

Gene ID 9647

Other Names

Protein phosphatase 1F, Ca(2+)/calmodulin-dependent protein kinase phosphatase, CaM-kinase phosphatase, CaMKPase, Partner of PIX 2, Protein fem-2 homolog, hFem-2, PPM1F, KIAA0015, POPX2

Target/Specificity

This PPM1F antibody is generated from rabbits immunized with a KLH conjugated synthetic peptide between 11-40 amino acids from the N-terminal region of human PPM1F.

Dilution

IHC-P~~1:50~100

WB~~1:1000

E~~Use at an assay dependent concentration.

Format

Purified polyclonal antibody supplied in PBS with 0.09% (W/V) sodium azide. This antibody is prepared by Saturated Ammonium Sulfate (SAS) precipitation followed by dialysis against PBS.

Storage

Maintain refrigerated at 2-8°C for up to 2 weeks. For long term storage store at -20°C in small aliquots to prevent freeze-thaw cycles.

Precautions

PPM1F Antibody (N-term) is for research use only and not for use in diagnostic or therapeutic procedures.

PPM1F Antibody (N-term) - Protein Information

Name PPM1F

Synonyms KIAA0015, POPX2

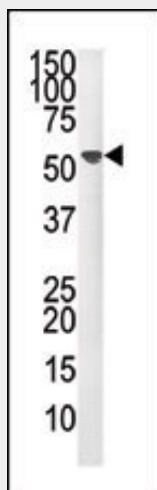
Function Dephosphorylates and concomitantly deactivates CaM-kinase II activated upon autophosphorylation, and CaM-kinases IV and I activated upon phosphorylation by CaM-kinase kinase. Promotes apoptosis.

PPM1F Antibody (N-term) - Protocols

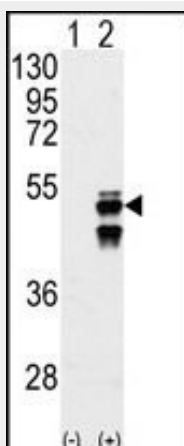
Provided below are standard protocols that you may find useful for product applications.

- [Western Blot](#)
- [Blocking Peptides](#)
- [Dot Blot](#)
- [Immunohistochemistry](#)
- [Immunofluorescence](#)
- [Immunoprecipitation](#)
- [Flow Cytometry](#)
- [Cell Culture](#)

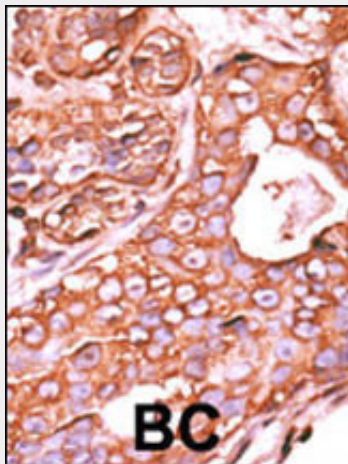
PPM1F Antibody (N-term) - Images



Western blot analysis of anti-PPM1F Pab (Cat. #AP8459a) in mouse liver tissue lysate (35ug/lane). PPM1F (arrow) was detected using the purified Pab.



Western blot analysis of PPM1F (arrow) using PPM1F Antibody (N-term) (Cat.#AP8459a). 293 cell lysates (2 ug/lane) either nontransfected (Lane 1) or transiently transfected with the PPM1F gene (Lane 2) (Origene Technologies).



Formalin-fixed and paraffin-embedded human cancer tissue reacted with the primary antibody, which was peroxidase-conjugated to the secondary antibody, followed by AEC staining. This data demonstrates the use of this antibody for immunohistochemistry; clinical relevance has not been evaluated. BC = breast carcinoma; HC = hepatocarcinoma.

PPM1F Antibody (N-term) - Background

PPM1F is a member of the PP2C family of Ser/Thr protein phosphatases. PP2C family members are known to be negative regulators of cell stress response pathways. This phosphatase can interact with Rho guanine nucleotide exchange factors (PIX), and thus block the effects of p21-activated kinase 1 (PAK), a protein kinase mediating biological effects downstream of Rho GTPases. Calcium/calmodulin-dependent protein kinase II gamma (CAMK2G/CAMK-II) is found to be one of the substrates of this phosphatase. The overexpression of this phosphatase or CAMK2G has been shown to mediate caspase-dependent apoptosis.

PPM1F Antibody (N-term) - References

Harvey, B.P., et al., J. Biol. Chem. 279(23):24889-24898 (2004).
Izmailova, E., et al., Nat. Med. 9(2):191-197 (2003).
Koh, C.G., et al., Curr. Biol. 12(4):317-321 (2002).
Tan, K.M., et al., J. Biol. Chem. 276(47):44193-44202 (2001).