

DUSP1 Antibody (N-term)
Purified Rabbit Polyclonal Antibody (Pab)
Catalog # AP8470a**Specification**

DUSP1 Antibody (N-term) - Product Information

| | |
|-------------------|------------------------|
| Application | IF, WB,E |
| Primary Accession | P28562 |
| Other Accession | P28563 |
| Reactivity | Human |
| Predicted | Mouse |
| Host | Rabbit |
| Clonality | Polyclonal |
| Isotype | Rabbit IgG |
| Antigen Region | 46-76 |

DUSP1 Antibody (N-term) - Additional Information**Gene ID** 1843**Other Names**

Dual specificity protein phosphatase 1, Dual specificity protein phosphatase hVH1, Mitogen-activated protein kinase phosphatase 1, MAP kinase phosphatase 1, MKP-1, Protein-tyrosine phosphatase CL100, DUSP1, CL100, MKP1, PTPN10, VH1

Target/Specificity

This DUSP1 antibody is generated from rabbits immunized with a KLH conjugated synthetic peptide between 46-76 amino acids from the N-terminal region of human DUSP1.

Dilution

IF~~1:10~50

WB~~1:1000

Format

Purified polyclonal antibody supplied in PBS with 0.09% (W/V) sodium azide. This antibody is prepared by Saturated Ammonium Sulfate (SAS) precipitation followed by dialysis against PBS.

Storage

Maintain refrigerated at 2-8°C for up to 2 weeks. For long term storage store at -20°C in small aliquots to prevent freeze-thaw cycles.

Precautions

DUSP1 Antibody (N-term) is for research use only and not for use in diagnostic or therapeutic procedures.

DUSP1 Antibody (N-term) - Protein Information**Name** DUSP1 ([HGNC:3064](#))

Function Dual specificity phosphatase that dephosphorylates MAP kinase MAPK1/ERK2 on both 'Thr-183' and 'Tyr-185', regulating its activity during the meiotic cell cycle.

Cellular Location

Nucleus {ECO:0000250|UniProtKB:Q91790}.

Tissue Location

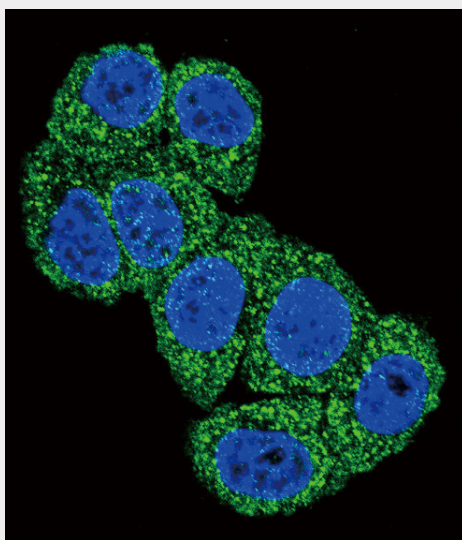
Expressed at high levels in the lung, liver placenta and pancreas. Moderate levels seen in the heart and skeletal muscle. Lower levels found in the brain and kidney

DUSP1 Antibody (N-term) - Protocols

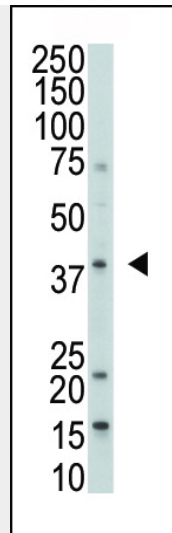
Provided below are standard protocols that you may find useful for product applications.

- [Western Blot](#)
- [Blocking Peptides](#)
- [Dot Blot](#)
- [Immunohistochemistry](#)
- [Immunofluorescence](#)
- [Immunoprecipitation](#)
- [Flow Cytometry](#)
- [Cell Culture](#)

DUSP1 Antibody (N-term) - Images



Confocal immunofluorescent analysis of DUSP1 Antibody (N-term)(Cat#AP8470a) with HeLa cell followed by Alexa Fluor 488-conjugated goat anti-rabbit IgG (green). DAPI was used to stain the cell nuclear (blue).



The anti-DUSP1 Pab (Cat. #AP8470a) is used in Western blot to detect DUSP1 in 293 cell lysate.

DUSP1 Antibody (N-term) - Background

The expression of DUSP1 gene is induced in human skin fibroblasts by oxidative/heat stress and growth factors. It specifies a protein with structural features similar to members of the non-receptor-type protein-tyrosine phosphatase family, and which has significant amino-acid sequence similarity to a Tyr/Ser-protein phosphatase encoded by the late gene H1 of vaccinia virus. The bacterially expressed and purified DUSP1 protein has intrinsic phosphatase activity, and specifically inactivates mitogen-activated protein (MAP) kinase in vitro by the concomitant dephosphorylation of both its phosphothreonine and phosphotyrosine residues. Furthermore, it suppresses the activation of MAP kinase by oncogenic ras in extracts of *Xenopus* oocytes. Thus, DUSP1 may play an important role in the human cellular response to environmental stress as well as in the negative regulation of cellular proliferation.

DUSP1 Antibody (N-term) - References

- Wu,W., et al., J. Biol. Chem. 280 (6), 4117-4124 (2005).
Small,G.W., et al., Mol. Pharmacol. 66 (6), 1478-1490 (2004).
Chandrasekharan,U.M., et al., J. Biol. Chem. 279 (45), 46678-46685 (2004).
Mizuno,R., et al., J. Urol. 172 (2), 723-727 (2004).
Vicent,S., et al., Clin. Cancer Res. 10 (11), 3639-3649 (2004).