

CKIP-1 Antibody (N-term)
Purified Rabbit Polyclonal Antibody (Pab)
Catalog # AP8500a**Specification**

CKIP-1 Antibody (N-term) - Product Information

Application	FC, IHC-P, WB,E
Primary Accession	Q53GL0
Other Accession	A4IFK0
Reactivity	Human
Predicted	Bovine
Host	Rabbit
Clonality	Polyclonal
Isotype	Rabbit IgG
Antigen Region	49-77

CKIP-1 Antibody (N-term) - Additional Information**Gene ID** 51177**Other Names**

Pleckstrin homology domain-containing family O member 1, PH domain-containing family O member 1, C-Jun-binding protein, JBP, Casein kinase 2-interacting protein 1, CK2-interacting protein 1, CKIP-1, Osteoclast maturation-associated gene 120 protein, PLEKHO1, CKIP1, OC120

Target/Specificity

This CKIP-1 antibody is generated from rabbits immunized with a KLH conjugated synthetic peptide between 49-77 amino acids from the N-terminal region of human CKIP-1.

Dilution

FC~~1:10~50

IHC-P~~1:50~100

WB~~1:1000

E~~Use at an assay dependent concentration.

Format

Purified polyclonal antibody supplied in PBS with 0.09% (W/V) sodium azide. This antibody is prepared by Saturated Ammonium Sulfate (SAS) precipitation followed by dialysis against PBS.

Storage

Maintain refrigerated at 2-8°C for up to 2 weeks. For long term storage store at -20°C in small aliquots to prevent freeze-thaw cycles.

Precautions

CKIP-1 Antibody (N-term) is for research use only and not for use in diagnostic or therapeutic procedures.

CKIP-1 Antibody (N-term) - Protein Information

Name PLEKHO1

Synonyms CKIP1, OC120

Function Plays a role in the regulation of the actin cytoskeleton through its interactions with actin capping protein (CP). May function to target CK2 to the plasma membrane thereby serving as an adapter to facilitate the phosphorylation of CP by protein kinase 2 (CK2). Appears to target ATM to the plasma membrane. Appears to also inhibit tumor cell growth by inhibiting AKT-mediated cell-survival. Also implicated in PI3K-regulated muscle differentiation, the regulation of AP-1 activity (plasma membrane bound AP-1 regulator that translocates to the nucleus) and the promotion of apoptosis induced by tumor necrosis factor TNF. When bound to PKB, it inhibits it probably by decreasing PKB level of phosphorylation.

Cellular Location

Cell membrane; Peripheral membrane protein. Nucleus. Cytoplasm Note=Predominantly localized to the plasma membrane through the binding to phosphatidylinositol 3-phosphate (PubMed:14729969). In C2C12 cells, with the absence of growth factor, it is found in the nucleus (PubMed:14729969). It rapidly translocates to the plasma membrane after insulin stimulation (PubMed:14729969). In response to TNF, it translocates from the plasma membrane to the cytoplasm and then to the nucleus accompanied by cleavage by caspase-3 (PubMed:15706351). However, the subcellular location is highly dependent of the cell type, and this explains why it is found exclusively at the plasma membrane, in some type of cells (Probable).
{ECO:0000269|PubMed:14729969, ECO:0000269|PubMed:15706351, ECO:0000305}

Tissue Location

Abundantly expressed in skeletal muscle and heart, moderately in kidney, liver, brain and placenta and sparingly in the pancreas and lung. Easily detectable in cell lines such as MOLT-4, HEK293 and Jurkat.

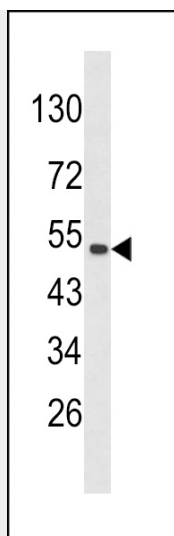
CKIP-1 Antibody (N-term) - Protocols

Provided below are standard protocols that you may find useful for product applications.

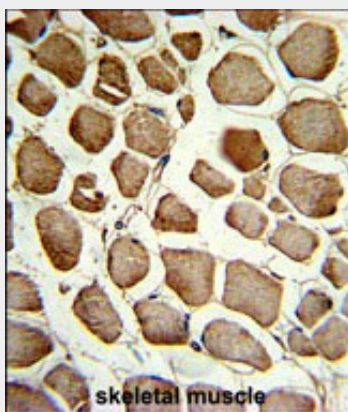
- [Western Blot](#)
- [Blocking Peptides](#)
- [Dot Blot](#)
- [Immunohistochemistry](#)
- [Immunofluorescence](#)
- [Immunoprecipitation](#)
- [Flow Cytometry](#)
- [Cell Culture](#)

CKIP-1 Antibody (N-term) - Images

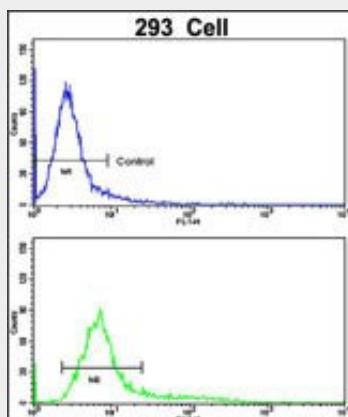




Western blot analysis of CKIP-1 Antibody (N-term) (Cat. #AP8500a) in 293 cell line lysates (35ug/lane). CKIP-1 (arrow) was detected using the purified Pab.



Formalin-fixed and paraffin-embedded human skeletal muscle reacted with CKIP-1 Antibody (N-term), which was peroxidase-conjugated to the secondary antibody, followed by DAB staining. This data demonstrates the use of this antibody for immunohistochemistry; clinical relevance has not been evaluated.



Flow cytometric analysis of 293 cells using CKIP-1 Antibody (N-term)(bottom histogram) compared to a negative control cell (top histogram). FITC-conjugated goat-anti-rabbit secondary antibodies were used for the analysis.

CKIP-1 Antibody (N-term) - Background

CKIP-1 plays a role in the regulation of the actin cytoskeleton through its interactions with actin capping protein (CP). This protein may function to target CK2 to the plasma membrane thereby serving as an adapter to facilitate the phosphorylation of CP by protein kinase 2 (CK2). It appears to target ATM to the plasma membrane and appears to also inhibit tumor cell growth by inhibiting AKT-mediated cell-survival. Also implicated in PI3K-regulated muscle differentiation, the regulation of AP-1 activity (plasma membrane bound AP-1 regulator that translocates to the nucleus) and the promotion of apoptosis induced by tumor necrosis factor TNF. When bound to PKB, it inhibits it probably by decreasing PKB level of phosphorylation.

CKIP-1 Antibody (N-term) - References

Barrios-Rodiles,M., et.al., Science 307 (5715), 1621-1625 (2005)