

SIL1 Antibody (Center)
Affinity Purified Rabbit Polyclonal Antibody (Pab)
Catalog # AP8511c

Specification

SIL1 Antibody (Center) - Product Information

| | |
|-------------------|------------------------|
| Application | FC, IHC-P, WB,E |
| Primary Accession | O9H173 |
| Reactivity | Human, Mouse |
| Host | Rabbit |
| Clonality | Polyclonal |
| Isotype | Rabbit IgG |
| Calculated MW | 52085 |
| Antigen Region | 99-126 |

SIL1 Antibody (Center) - Additional Information

Gene ID 64374

Other Names

Nucleotide exchange factor SIL1, BiP-associated protein, BAP, SIL1

Target/Specificity

This SIL1 antibody is generated from rabbits immunized with a KLH conjugated synthetic peptide between 99-126 amino acids from the Central region of human SIL1.

Dilution

FC~~1:10~50

IHC-P~~1:50~100

WB~~1:1000

E~~Use at an assay dependent concentration.

Format

Purified polyclonal antibody supplied in PBS with 0.09% (W/V) sodium azide. This antibody is purified through a protein A column, followed by peptide affinity purification.

Storage

Maintain refrigerated at 2-8°C for up to 2 weeks. For long term storage store at -20°C in small aliquots to prevent freeze-thaw cycles.

Precautions

SIL1 Antibody (Center) is for research use only and not for use in diagnostic or therapeutic procedures.

SIL1 Antibody (Center) - Protein Information

Name SIL1

Function Required for protein translocation and folding in the endoplasmic reticulum (ER). Functions as a nucleotide exchange factor for the ER luminal chaperone HSPA5.

Cellular Location

Endoplasmic reticulum lumen

Tissue Location

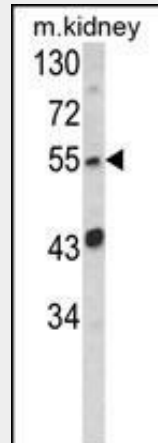
Highly expressed in tissues which produce large amounts of secreted proteins such as kidney, liver and placenta. Also expressed in colon, heart, lung, ovary, pancreas, peripheral leukocyte, prostate, spleen and thymus. Expressed at low levels throughout the brain.

SIL1 Antibody (Center) - Protocols

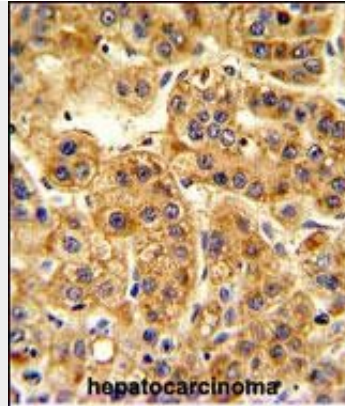
Provided below are standard protocols that you may find useful for product applications.

- [Western Blot](#)
- [Blocking Peptides](#)
- [Dot Blot](#)
- [Immunohistochemistry](#)
- [Immunofluorescence](#)
- [Immunoprecipitation](#)
- [Flow Cytometry](#)
- [Cell Culture](#)

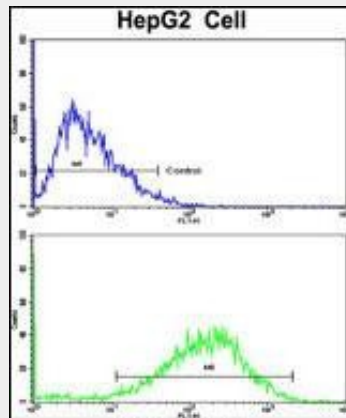
SIL1 Antibody (Center) - Images



Western blot analysis of SIL1 Antibody (Center) (Cat. #AP8511c) in mouse kidney tissue lysates (35ug/lane).SIL1 (arrow) was detected using the purified Pab.



Formalin-fixed and paraffin-embedded human hepatocarcinoma reacted with SIL1 Antibody (Center), which was peroxidase-conjugated to the secondary antibody, followed by DAB staining. This data demonstrates the use of this antibody for immunohistochemistry; clinical relevance has not been evaluated.



Flow cytometric analysis of HepG2 cells using SIL1 Antibody (Center)(bottom histogram) compared to a negative control cell (top histogram). FITC-conjugated goat-anti-rabbit secondary antibodies were used for the analysis.

SIL1 Antibody (Center) - Background

SIL1 IS a resident endoplasmic reticulum (ER), N-linked glycoprotein with an N-terminal ER targeting sequence, 2 putative N-glycosylation sites, and a C-terminal ER retention signal. This protein functions as a nucleotide exchange factor for another unfolded protein response protein.

SIL1 Antibody (Center) - References

Clark,H.F., ET.AL., Genome Res. 13 (10), 2265-2270 (2003)