

ACTN1 Antibody (N-term)
Affinity Purified Rabbit Polyclonal Antibody (Pab)
Catalog # AP8512a**Specification**

ACTN1 Antibody (N-term) - Product Information

Application	FC, IHC-P, WB,E
Primary Accession	P12814
Other Accession	Q9Z1P2 , Q7TPR4 , Q2PFV7 , Q3B7N2
Reactivity	Human
Predicted	Bovine, Monkey, Mouse, Rat
Host	Rabbit
Clonality	Polyclonal
Isotype	Rabbit IgG
Calculated MW	103058
Antigen Region	1-30

ACTN1 Antibody (N-term) - Additional Information**Gene ID 87****Other Names**

Alpha-actinin-1, Alpha-actinin cytoskeletal isoform, F-actin cross-linking protein, Non-muscle alpha-actinin-1, ACTN1

Target/Specificity

This ACTN1 antibody is generated from rabbits immunized with a KLH conjugated synthetic peptide between 1-30 amino acids from the N-terminal region of human ACTN1.

Dilution

FC~~1:10~50

IHC-P~~1:50~100

WB~~1:1000

E~~Use at an assay dependent concentration.

Format

Purified polyclonal antibody supplied in PBS with 0.09% (W/V) sodium azide. This antibody is purified through a protein A column, followed by peptide affinity purification.

Storage

Maintain refrigerated at 2-8°C for up to 2 weeks. For long term storage store at -20°C in small aliquots to prevent freeze-thaw cycles.

Precautions

ACTN1 Antibody (N-term) is for research use only and not for use in diagnostic or therapeutic procedures.

ACTN1 Antibody (N-term) - Protein Information

Name ACTN1

Function F-actin cross-linking protein which is thought to anchor actin to a variety of intracellular structures. Association with IGSF8 regulates the immune synapse formation and is required for efficient T- cell activation (PubMed:[22689882](#)).

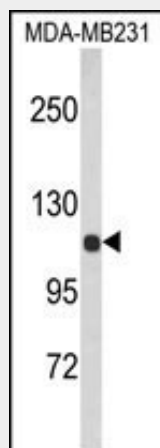
Cellular Location

Cytoplasm, cytoskeleton. Cytoplasm, myofibril, sarcomere, Z line. Cell membrane. Cell junction {ECO:0000250|UniProtKB:Q9Z1P2}. Cell projection, ruffle {ECO:0000250|UniProtKB:Q7TPR4}. Note=Colocalizes with MYOZ2 and PPP3CA at the Z-line of heart and skeletal muscle. Colocalizes with PSD in membrane ruffles and central reticular structures {ECO:0000250|UniProtKB:Q7TPR4}

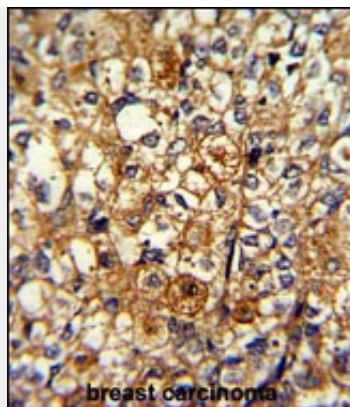
ACTN1 Antibody (N-term) - Protocols

Provided below are standard protocols that you may find useful for product applications.

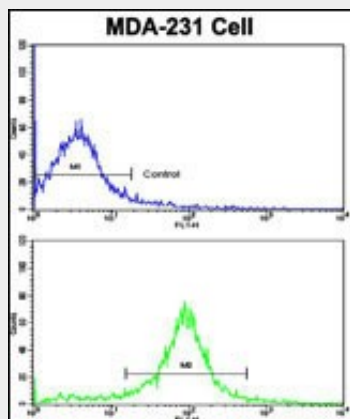
- [Western Blot](#)
- [Blocking Peptides](#)
- [Dot Blot](#)
- [Immunohistochemistry](#)
- [Immunofluorescence](#)
- [Immunoprecipitation](#)
- [Flow Cytometry](#)
- [Cell Culture](#)

ACTN1 Antibody (N-term) - Images

Western blot analysis of ACTN1 Antibody (N-term) (Cat. #AP8512a) in MDA-MB231 cell line lysates (35ug/lane). ACTN1 (arrow) was detected using the purified Pab.



Formalin-fixed and paraffin-embedded human breast carcinoma with ACTN1 Antibody (N-term), which was peroxidase-conjugated to the secondary antibody, followed by DAB staining. This data demonstrates the use of this antibody for immunohistochemistry; clinical relevance has not been evaluated.



Flow cytometric analysis of MDA-231 cells using ACTN1 Antibody (N-term)(bottom histogram) compared to a negative control cell (top histogram). FITC-conjugated goat-anti-rabbit secondary antibodies were used for the analysis.

ACTN1 Antibody (N-term) - Background

ACTN1 is a F-actin cross-linking protein which is thought to anchor actin to a variety of intracellular structures. This is a bundling protein.

ACTN1 Antibody (N-term) - References

Zhang,Z., et.al., J. Biol. Chem. 281 (3), 1746-1754 (2006)