

ACTR3B Antibody (C-term)
Affinity Purified Rabbit Polyclonal Antibody (Pab)
Catalog # AP8540b**Specification**

ACTR3B Antibody (C-term) - Product Information

Application	WB,E
Primary Accession	O9P1U1
Reactivity	Human, Mouse
Host	Rabbit
Clonality	Polyclonal
Isotype	Rabbit IgG
Calculated MW	47608
Antigen Region	325-352

ACTR3B Antibody (C-term) - Additional Information**Gene ID** 57180**Other Names**

Actin-related protein 3B, ARP3-beta, Actin-like protein 3B, Actin-related protein ARP4, ACTR3B, ARP11, ARP4

Target/Specificity

This ACTR3B antibody is generated from rabbits immunized with a KLH conjugated synthetic peptide between 325-352 amino acids from the C-terminal region of human ACTR3B.

Dilution

WB~~1:1000

E~~Use at an assay dependent concentration.

Format

Purified polyclonal antibody supplied in PBS with 0.09% (W/V) sodium azide. This antibody is purified through a protein A column, followed by peptide affinity purification.

Storage

Maintain refrigerated at 2-8°C for up to 2 weeks. For long term storage store at -20°C in small aliquots to prevent freeze-thaw cycles.

Precautions

ACTR3B Antibody (C-term) is for research use only and not for use in diagnostic or therapeutic procedures.

ACTR3B Antibody (C-term) - Protein Information**Name** ACTR3B**Synonyms** ARP11, ARP4

Function Plays a role in the organization of the actin cytoskeleton. May function as ATP-binding component of the Arp2/3 complex which is involved in regulation of actin polymerization and together with an activating nucleation-promoting factor (NPF) mediates the formation of branched actin networks. May decrease the metastatic potential of tumors.

Cellular Location

Cytoplasm, cytoskeleton. Cell projection

Tissue Location

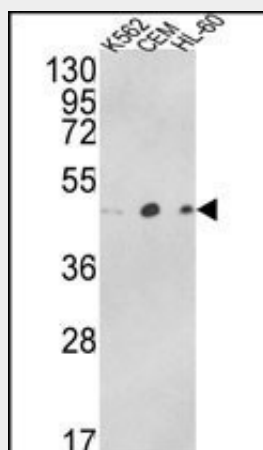
Detected in fetal brain. Detected throughout the adult brain, in neurons from gray matter, but not in white matter Detected in liver, skeletal muscle and pancreas. Detected in lung adenocarcinoma cells with low metastatic potential, but not in lung adenocarcinoma cells with high metastatic potential

ACTR3B Antibody (C-term) - Protocols

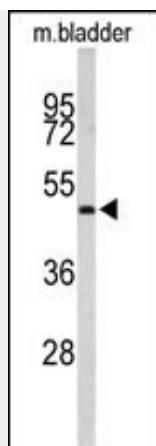
Provided below are standard protocols that you may find useful for product applications.

- [Western Blot](#)
- [Blocking Peptides](#)
- [Dot Blot](#)
- [Immunohistochemistry](#)
- [Immunofluorescence](#)
- [Immunoprecipitation](#)
- [Flow Cytometry](#)
- [Cell Culture](#)

ACTR3B Antibody (C-term) - Images



Western blot analysis of ACTR3B Antibody (C-term) (Cat. #AP8540b) in K562, CEM, HL-60 cell line lysates (35ug/lane). ACTR3B (arrow) was detected using the purified Pab.



Western blot analysis of ACTR3B Antibody (C-term) (Cat. #AP8540b) in mouse bladder tissue lysates (35ug/lane). ACTR3B (arrow) was detected using the purified Pab.

ACTR3B Antibody (C-term) - Background

ACTR3B plays a role in the organization of the actin cytoskeleton. It may function as ATP-binding component of the Arp2/3 complex which is involved in regulation of actin polymerization and together with an activating nucleation-promoting factor (NPF) mediates the formation of branched actin networks and may decrease the metastatic potential of tumors.

ACTR3B Antibody (C-term) - References

Ewing,R.M., et.al., Mol. Syst. Biol. 3, 89 (2007)
Shindo-Okada,N.et.al., Biochem. Biophys. Res. Commun. 280 (1), 61-67 (2001)