

LTC4S Antibody (N-term)
Affinity Purified Rabbit Polyclonal Antibody (Pab)
Catalog # AP8584a

Specification

LTC4S Antibody (N-term) - Product Information

Application	WB,E
Primary Accession	Q16873
Reactivity	Human
Host	Rabbit
Clonality	Polyclonal
Isotype	Rabbit IgG
Calculated MW	16567
Antigen Region	29-55

LTC4S Antibody (N-term) - Additional Information

Gene ID 4056

Other Names

Leukotriene C4 synthase, LTC4 synthase, Leukotriene-C(4) synthase, LTC4S

Target/Specificity

This LTC4S antibody is generated from rabbits immunized with a KLH conjugated synthetic peptide between 29-55 amino acids from the N-terminal region of human LTC4S.

Dilution

WB~~1:1000

E~~Use at an assay dependent concentration.

Format

Purified polyclonal antibody supplied in PBS with 0.09% (W/V) sodium azide. This antibody is purified through a protein A column, followed by peptide affinity purification.

Storage

Maintain refrigerated at 2-8°C for up to 2 weeks. For long term storage store at -20°C in small aliquots to prevent freeze-thaw cycles.

Precautions

LTC4S Antibody (N-term) is for research use only and not for use in diagnostic or therapeutic procedures.

LTC4S Antibody (N-term) - Protein Information

Name LTC4S

Function Catalyzes the conjugation of leukotriene A4 with reduced glutathione (GSH) to form leukotriene C4 with high specificity (PubMed:[23409838](#), PubMed:[27365393](#), PubMed:[27791009](#),

PubMed:[7937884](#), PubMed:[9153254](#)). Can also catalyze the transfer of a glutathionyl group from glutathione (GSH) to 13(S),14(S)-epoxy-docosahexaenoic acid to form maresin conjugate in tissue regeneration 1 (MCTR1), a bioactive lipid mediator that possess potent anti-inflammatory and proresolving actions (PubMed:[27791009](#)).

Cellular Location

Nucleus outer membrane; Multi-pass membrane protein. Endoplasmic reticulum membrane; Multi-pass membrane protein. Nucleus membrane; Multi-pass membrane protein

Tissue Location

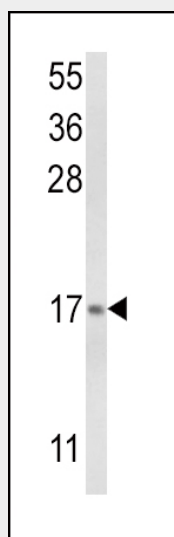
Detected in lung, platelets and the myelogenous leukemia cell line KG-1 (at protein level). LTC4S activity is present in eosinophils, basophils, mast cells, certain phagocytic mononuclear cells, endothelial cells, vascular smooth muscle cells and platelets

LTC4S Antibody (N-term) - Protocols

Provided below are standard protocols that you may find useful for product applications.

- [Western Blot](#)
- [Blocking Peptides](#)
- [Dot Blot](#)
- [Immunohistochemistry](#)
- [Immunofluorescence](#)
- [Immunoprecipitation](#)
- [Flow Cytometry](#)
- [Cell Culture](#)

LTC4S Antibody (N-term) - Images



Western blot analysis of LTC4S Antibody (N-term) (Cat. #AP8584a) in NCI-H460 cell line lysates (35ug/lane). LTC4S (arrow) was detected using the purified Pab.(2ug/ml)

LTC4S Antibody (N-term) - Background

LTC4S catalyzes the conjugation of leukotriene A4 with reduced glutathione to form leukotriene C4.

LTC4S Antibody (N-term) - References

Song,X.Y., et.al., Diabetologia 52 (8), 1543-1553 (2009)
Schurks,M., et.al., J Pain 10 (7), 759-766 (2009)