

**USF2 Antibody (Center)**  
**Affinity Purified Rabbit Polyclonal Antibody (Pab)**  
**Catalog # AP8585c**

**Specification**

---

**USF2 Antibody (Center) - Product Information**

Application	IHC-P, WB,E
Primary Accession	<a href="#">Q15853</a>
Other Accession	<a href="#">Q63665</a> , <a href="#">Q64705</a>
Reactivity	Human, Mouse
Predicted	Rat
Host	Rabbit
Clonality	Polyclonal
Isotype	Rabbit IgG
Calculated MW	36955
Antigen Region	218-246

**USF2 Antibody (Center) - Additional Information**

**Gene ID** 7392

**Other Names**

Upstream stimulatory factor 2, Class B basic helix-loop-helix protein 12, bHLHb12, FOS-interacting protein, FIP, Major late transcription factor 2, Upstream transcription factor 2, USF2, BHLHB12

**Target/Specificity**

This USF2 antibody is generated from rabbits immunized with a KLH conjugated synthetic peptide between 218-246 amino acids from the Central region of human USF2.

**Dilution**

IHC-P~~1:50~100

WB~~1:1000

E~~Use at an assay dependent concentration.

**Format**

Purified polyclonal antibody supplied in PBS with 0.09% (W/V) sodium azide. This antibody is purified through a protein A column, followed by peptide affinity purification.

**Storage**

Maintain refrigerated at 2-8°C for up to 2 weeks. For long term storage store at -20°C in small aliquots to prevent freeze-thaw cycles.

**Precautions**

USF2 Antibody (Center) is for research use only and not for use in diagnostic or therapeutic procedures.

**USF2 Antibody (Center) - Protein Information**

**Name** USF2

**Synonyms** BHLHB12

**Function** Transcription factor that binds to a symmetrical DNA sequence (E-boxes) (5'-CACGTG-3') that is found in a variety of viral and cellular promoters.

**Cellular Location**

Nucleus.

**Tissue Location**

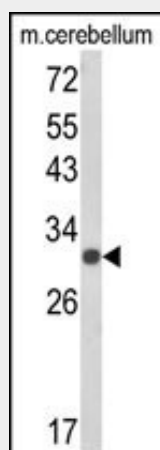
Ubiquitous.

### USF2 Antibody (Center) - Protocols

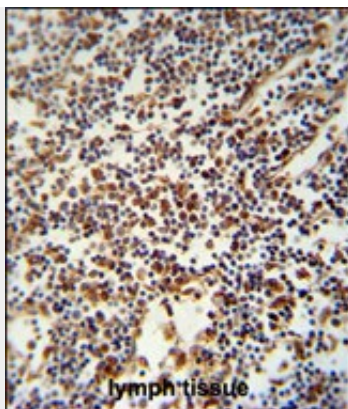
Provided below are standard protocols that you may find useful for product applications.

- [Western Blot](#)
- [Blocking Peptides](#)
- [Dot Blot](#)
- [Immunohistochemistry](#)
- [Immunofluorescence](#)
- [Immunoprecipitation](#)
- [Flow Cytometry](#)
- [Cell Culture](#)

### USF2 Antibody (Center) - Images



Western blot analysis of USF2 Antibody (Center) (Cat. #AP8585c) in mouse cerebellum tissue lysates (35ug/lane).USF2 (arrow) was detected using the purified Pab.



USF2 Antibody (Center) (Cat. #AP8585c) immunohistochemistry analysis in formalin fixed and paraffin embedded human lymph tissue followed by peroxidase conjugation of the secondary antibody and DAB staining. This data demonstrates the use of the USF2 Antibody (Center) for immunohistochemistry. Clinical relevance has not been evaluated.

#### **USF2 Antibody (Center) - Background**

USF2 is a member of the basic helix-loop-helix leucine zipper family, and can function as a cellular transcription factor. This protein can activate transcription through pyrimidine-rich initiator (Inr) elements and E-box motifs.

#### **USF2 Antibody (Center) - References**

Olsen,J.V., et.al., Cell 127 (3), 635-648 (2006)  
Groenen,P.M., et.al., Genomics 38 (2), 141-148 (1996)