

CEP55 Antibody (N-term)
Affinity Purified Rabbit Polyclonal Antibody (Pab)
Catalog # AP8586a**Specification**

CEP55 Antibody (N-term) - Product Information

Application	WB,E
Primary Accession	Q53EZ4
Reactivity	Human
Host	Rabbit
Clonality	Polyclonal
Isotype	Rabbit IgG
Calculated MW	54178
Antigen Region	38-64

CEP55 Antibody (N-term) - Additional Information**Gene ID** 55165**Other Names**

Centrosomal protein of 55 kDa, Cep55, Up-regulated in colon cancer 6, CEP55, C10orf3, URCC6

Target/Specificity

This CEP55 antibody is generated from rabbits immunized with a KLH conjugated synthetic peptide between 38-64 amino acids from the N-terminal region of human CEP55.

Dilution

WB~~1:1000

E~~Use at an assay dependent concentration.

Format

Purified polyclonal antibody supplied in PBS with 0.09% (W/V) sodium azide. This antibody is purified through a protein A column, followed by peptide affinity purification.

Storage

Maintain refrigerated at 2-8°C for up to 2 weeks. For long term storage store at -20°C in small aliquots to prevent freeze-thaw cycles.

Precautions

CEP55 Antibody (N-term) is for research use only and not for use in diagnostic or therapeutic procedures.

CEP55 Antibody (N-term) - Protein Information**Name** CEP55 ([HGNC:1161](#))**Function** Plays a role in mitotic exit and cytokinesis (PubMed:[16198290](#), PubMed:[17853893](#)). Recruits PDCCD6IP and TSG101 to midbody during cytokinesis. Required for successful completion

of cytokinesis (PubMed:[17853893](#)). Not required for microtubule nucleation (PubMed:[16198290](#)). Plays a role in the development of the brain and kidney (PubMed:[28264986](#)).

Cellular Location

Cytoplasm. Cytoplasm, cytoskeleton, microtubule organizing center, centrosome, centriole. Cytoplasm, cytoskeleton, microtubule organizing center, centrosome. Cleavage furrow. Midbody, Midbody ring. Note=Present at the centrosomes at interphase. A small portion is associated preferentially with the mother centriole, whereas the majority localizes to the pericentriolar material. During mitosis, loses affinity for the centrosome at the onset of prophase and diffuses throughout the cell. This dissociation from the centrosome is phosphorylation-dependent. May remain localized at the centrosome during mitosis in certain cell types. Appears at the cleavage furrow in late anaphase and in the midbody in cytokinesis

Tissue Location

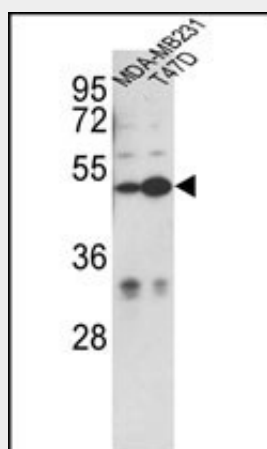
Expressed in embryonic brain (PubMed:28264986). Expressed in fetal brain ganglionic eminence, kidney tubules and multinucleate neurons in the temporal cortex (PubMed:28264986) Expressed in adult brain, cerebellum, kidney tubules, intestine and muscles (at protein level) (PubMed:28264986, PubMed:28295209). Widely expressed, mostly in proliferative tissues. Highly expressed in testis Intermediate levels in adult and fetal thymus, as well as in various cancer cell lines. Low levels in different parts of the digestive tract, bone marrow, lymph nodes, placenta, fetal heart and fetal spleen. Hardly detected in brain.

CEP55 Antibody (N-term) - Protocols

Provided below are standard protocols that you may find useful for product applications.

- [Western Blot](#)
- [Blocking Peptides](#)
- [Dot Blot](#)
- [Immunohistochemistry](#)
- [Immunofluorescence](#)
- [Immunoprecipitation](#)
- [Flow Cytometry](#)
- [Cell Culture](#)

CEP55 Antibody (N-term) - Images



Western blot analysis of CEP55 Antibody (N-term) (Cat. #AP8586a) in MDA-MB231, T47D cell line lysates (35ug/lane). CEP55 (arrow) was detected using the purified Pab.

CEP55 Antibody (N-term) - Background

CEP55 Plays a role in mitotic exit and cytokinesis. Not required for microtubule nucleation. Recruits PD607501 and TSG101 to midbody during cytokinesis.

CEP55 Antibody (N-term) - References

Grupe,A., et.al., Am. J. Hum. Genet. 78 (1), 78-88 (2006)
Fabbro,M., et.al., Dev. Cell 9 (4), 477-488 (2005)