

**TSPAN31 Antibody (Center)**  
**Affinity Purified Rabbit Polyclonal Antibody (Pab)**  
**Catalog # AP8587c****Specification**

---

**TSPAN31 Antibody (Center) - Product Information**

Application	WB,E
Primary Accession	<a href="#">Q12999</a>
Other Accession	<a href="#">Q32KP1</a>
Reactivity	Human, Rat
Predicted	Bovine
Host	Rabbit
Clonality	Polyclonal
Isotype	Rabbit IgG
Antigen Region	102-128

**TSPAN31 Antibody (Center) - Additional Information****Gene ID** 6302**Other Names**

Tetraspanin-31, Tspan-31, Sarcoma-amplified sequence, TSPAN31, SAS

**Target/Specificity**

This TSPAN31 antibody is generated from rabbits immunized with a KLH conjugated synthetic peptide between 102-128 amino acids from the Central region of human TSPAN31.

**Dilution**

WB~~1:1000

**Format**

Purified polyclonal antibody supplied in PBS with 0.09% (W/V) sodium azide. This antibody is purified through a protein A column, followed by peptide affinity purification.

**Storage**

Maintain refrigerated at 2-8°C for up to 2 weeks. For long term storage store at -20°C in small aliquots to prevent freeze-thaw cycles.

**Precautions**

TSPAN31 Antibody (Center) is for research use only and not for use in diagnostic or therapeutic procedures.

**TSPAN31 Antibody (Center) - Protein Information****Name** TSPAN31**Synonyms** SAS

## Cellular Location

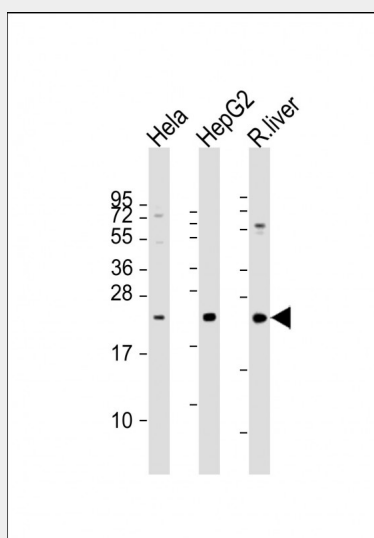
Membrane; Multi-pass membrane protein.

## TSPAN31 Antibody (Center) - Protocols

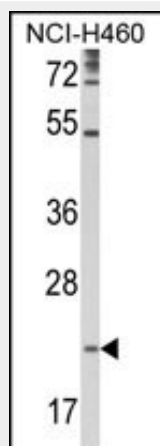
Provided below are standard protocols that you may find useful for product applications.

- [Western Blot](#)
- [Blocking Peptides](#)
- [Dot Blot](#)
- [Immunohistochemistry](#)
- [Immunofluorescence](#)
- [Immunoprecipitation](#)
- [Flow Cytometry](#)
- [Cell Culture](#)

## TSPAN31 Antibody (Center) - Images



All lanes : Anti-TSPAN31 Antibody (Center) at 1:2000 dilution Lane 1: HeLa whole cell lysate Lane 2: HepG2 whole cell lysate Lane 3: rat liver lysate Lysates/proteins at 20 µg per lane. Secondary Goat Anti-Rabbit IgG, (H+L), Peroxidase conjugated at 1/10000 dilution. Predicted band size : 23 kDa Blocking/Dilution buffer: 5% NFDm/TBST.



Western blot analysis of TSPAN31 Antibody (Center) (Cat. #AP8587c) in NCI-H460 cell line lysates (35ug/lane). TSPAN31 (arrow) was detected using the purified Pab. (2ug/ml)

#### **TSPAN31 Antibody (Center) - Background**

TSPAN31 is a member of the transmembrane 4 superfamily, also known as the tetraspanin family. Most of these members are cell-surface proteins that are characterized by the presence of four hydrophobic domains. The proteins mediate signal transduction events that play a role in the regulation of cell development, activation, growth and motility. This encoded protein is thought to be involved in growth-related cellular processes. It is associated with tumorigenesis and osteosarcoma.

#### **TSPAN31 Antibody (Center) - References**

Jankowski, S.A., et al., *Oncogene* 9 (4), 1205-1211 (1994)  
Ragazzini, P., et al., *Histol. Histopathol.* 19 (2), 401-411 (2004)