

PON3 Antibody (N-term)
Affinity Purified Rabbit Polyclonal Antibody (Pab)
Catalog # AP8595a

Specification

PON3 Antibody (N-term) - Product Information

Application	FC, IHC-P, WB,E
Primary Accession	Q15166
Reactivity	Human
Host	Rabbit
Clonality	Polyclonal
Isotype	Rabbit IgG
Calculated MW	39607
Antigen Region	10-38

PON3 Antibody (N-term) - Additional Information

Gene ID 5446

Other Names

Serum paraoxonase/lactonase 3, PON3

Target/Specificity

This PON3 antibody is generated from rabbits immunized with a KLH conjugated synthetic peptide between 10-38 amino acids from the N-terminal region of human PON3.

Dilution

FC~~1:10~50

IHC-P~~1:50~100

WB~~1:1000

E~~Use at an assay dependent concentration.

Format

Purified polyclonal antibody supplied in PBS with 0.09% (W/V) sodium azide. This antibody is purified through a protein A column, followed by peptide affinity purification.

Storage

Maintain refrigerated at 2-8°C for up to 2 weeks. For long term storage store at -20°C in small aliquots to prevent freeze-thaw cycles.

Precautions

PON3 Antibody (N-term) is for research use only and not for use in diagnostic or therapeutic procedures.

PON3 Antibody (N-term) - Protein Information

Name PON3

Function Has low activity towards the organophosphate paraxon and aromatic carboxylic acid esters. Rapidly hydrolyzes lactones such as statin prodrugs (e.g. lovastatin). Hydrolyzes aromatic lactones and 5- or 6-member ring lactones with aliphatic substituents but not simple lactones or those with polar substituents.

Cellular Location

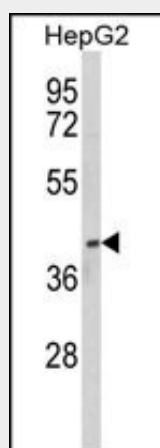
Secreted, extracellular space.

PON3 Antibody (N-term) - Protocols

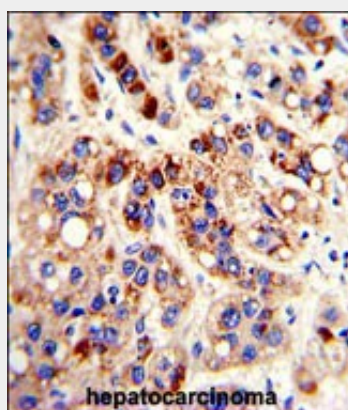
Provided below are standard protocols that you may find useful for product applications.

- [Western Blot](#)
- [Blocking Peptides](#)
- [Dot Blot](#)
- [Immunohistochemistry](#)
- [Immunofluorescence](#)
- [Immunoprecipitation](#)
- [Flow Cytometry](#)
- [Cell Culture](#)

PON3 Antibody (N-term) - Images

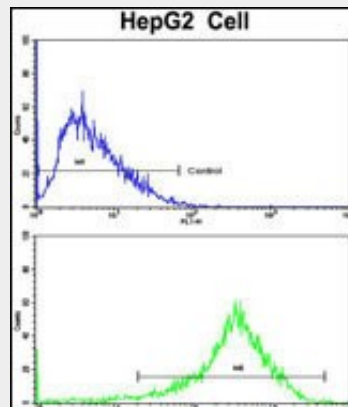


Western blot analysis of PON3 Antibody (N-term) (Cat. #AP8595a) in HepG2 cell line lysates (35ug/lane). PON3 (arrow) was detected using the purified Pab.



Formalin-fixed and paraffin-embedded human hepatocarcinoma with PON3 Antibody (N-term),

which was peroxidase-conjugated to the secondary antibody, followed by DAB staining. This data demonstrates the use of this antibody for immunohistochemistry; clinical relevance has not been evaluated.



Flow cytometric analysis of HepG2 cells using PON3 Antibody (N-term)(bottom histogram) compared to a negative control cell (top histogram). FITC-conjugated goat-anti-rabbit secondary antibodies were used for the analysis.

PON3 Antibody (N-term) - Background

PON3 is secreted into the bloodstream and associates with high-density lipoprotein (HDL). The protein also rapidly hydrolyzes lactones and can inhibit the oxidation of low-density lipoprotein (LDL), a function that is believed to slow the initiation and progression of atherosclerosis.

PON3 Antibody (N-term) - References

Precourt,L.P., et.al., Int. J. Biochem. Cell Biol. 41 (7), 1628-1637 (2009)
Mackness,B., et.al., Curr. Opin. Lipidol. 13 (4), 357-362 (2002)