

SERPINB7 Antibody (Center)
Affinity Purified Rabbit Polyclonal Antibody (Pab)
Catalog # AP8597c**Specification**

SERPINB7 Antibody (Center) - Product Information

Application	FC, IHC-P, WB,E
Primary Accession	O75635
Reactivity	Human
Host	Rabbit
Clonality	Polyclonal
Isotype	Rabbit IgG
Calculated MW	42905
Antigen Region	108-137

SERPINB7 Antibody (Center) - Additional Information**Gene ID** 8710**Other Names**

SerpB7, Megsin, TP55, SERPINB7

Target/Specificity

This SERPINB7 antibody is generated from rabbits immunized with a KLH conjugated synthetic peptide between 108-137 amino acids from the Central region of human SERPINB7.

Dilution

FC~~1:10~50

IHC-P~~1:50~100

WB~~1:1000

E~~Use at an assay dependent concentration.

Format

Purified polyclonal antibody supplied in PBS with 0.09% (W/V) sodium azide. This antibody is purified through a protein A column, followed by peptide affinity purification.

Storage

Maintain refrigerated at 2-8°C for up to 2 weeks. For long term storage store at -20°C in small aliquots to prevent freeze-thaw cycles.

Precautions

SERPINB7 Antibody (Center) is for research use only and not for use in diagnostic or therapeutic procedures.

SERPINB7 Antibody (Center) - Protein Information**Name** SERPINB7

Function Might function as an inhibitor of Lys-specific proteases. Might influence the maturation of megakaryocytes via its action as a serpin.

Cellular Location

Cytoplasm.

Tissue Location

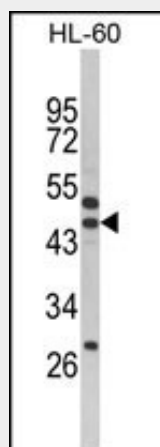
Predominantly expressed in mesangial cells. Expressed in the epidermis of the whole body

SERPINB7 Antibody (Center) - Protocols

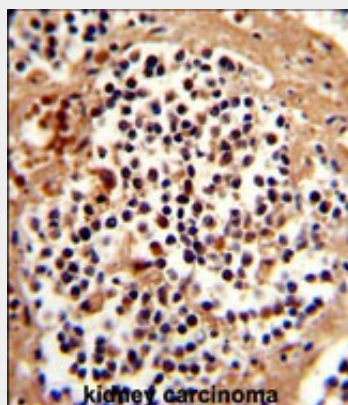
Provided below are standard protocols that you may find useful for product applications.

- [Western Blot](#)
- [Blocking Peptides](#)
- [Dot Blot](#)
- [Immunohistochemistry](#)
- [Immunofluorescence](#)
- [Immunoprecipitation](#)
- [Flow Cytometry](#)
- [Cell Culture](#)

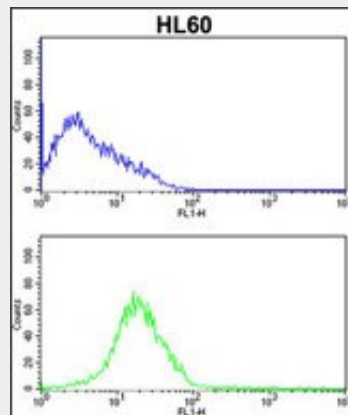
SERPINB7 Antibody (Center) - Images



Western blot analysis of SERPINB7 Antibody (Center) (Cat. #AP8597c) in HL-60 cell line lysates (35ug/lane). SERPINB7 (arrow) was detected using the purified Pab.



Formalin-fixed and paraffin-embedded human kidney carcinoma reacted with SERPINB7 Antibody (Center), which was peroxidase-conjugated to the secondary antibody, followed by DAB staining. This data demonstrates the use of this antibody for immunohistochemistry; clinical relevance has not been evaluated.



SERPINB7 Antibody (Center) (Cat. #AP8597c) flow cytometric analysis of HL60 cells (bottom histogram) compared to a negative control cell (top histogram). FITC-conjugated goat-anti-rabbit secondary antibodies were used for the analysis.

SERPINB7 Antibody (Center) - Background

SERPINB7 might function as an inhibitor of Lys-specific proteases and might influence the maturation of megakaryocytes via its action as a serpin.

SERPINB7 Antibody (Center) - References

- Maixnerova,D., et.al., Folia Biol. (Praha) 54 (2), 40-45 (2008)
- Wang,Z.H., et.al., Zhonghua Yi Xue Za Zhi 86 (19), 1337-1341 (2006)
- Inagi,R., et.al., J. Am. Soc. Nephrol. 13 (11), 2715-2722 (2002)