

**PPP2R2B Antibody (Center)**  
**Affinity Purified Rabbit Polyclonal Antibody (Pab)**  
**Catalog # AP8600c**

## Specification

---

### PPP2R2B Antibody (Center) - Product Information

Application	FC, IHC-P, WB,E
Primary Accession	<a href="#">Q00005</a>
Other Accession	<a href="#">A1L3L9</a> , <a href="#">P36877</a> , <a href="#">Q00006</a> , <a href="#">P54614</a> , <a href="#">Q6ZWR4</a> , <a href="#">Q4R8L3</a> , <a href="#">Q5E9Q7</a>
Reactivity	Human
Predicted	Bovine, Monkey, Mouse, Pig, Rabbit, Rat, Xenopus
Host	Rabbit
Clonality	Polyclonal
Isotype	Rabbit IgG
Calculated MW	51710
Antigen Region	104-130

### PPP2R2B Antibody (Center) - Additional Information

**Gene ID** 5521

#### Other Names

Serine/threonine-protein phosphatase 2A 55 kDa regulatory subunit B beta isoform, PP2A subunit B isoform B55-beta, PP2A subunit B isoform PR55-beta, PP2A subunit B isoform R2-beta, PP2A subunit B isoform beta, PPP2R2B

#### Target/Specificity

This PPP2R2B antibody is generated from rabbits immunized with a KLH conjugated synthetic peptide between 104-130 amino acids from the Central region of human PPP2R2B.

#### Dilution

FC~~1:10~50

IHC-P~~1:50~100

WB~~1:1000

E~~Use at an assay dependent concentration.

#### Format

Purified polyclonal antibody supplied in PBS with 0.09% (W/V) sodium azide. This antibody is purified through a protein A column, followed by peptide affinity purification.

#### Storage

Maintain refrigerated at 2-8°C for up to 2 weeks. For long term storage store at -20°C in small aliquots to prevent freeze-thaw cycles.

#### Precautions

PPP2R2B Antibody (Center) is for research use only and not for use in diagnostic or therapeutic procedures.

## PPP2R2B Antibody (Center) - Protein Information

**Name** PPP2R2B

**Function** The B regulatory subunit might modulate substrate selectivity and catalytic activity, and might also direct the localization of the catalytic enzyme to a particular subcellular compartment. Within the PP2A holoenzyme complex, isoform 2 is required to promote proapoptotic activity (By similarity). Isoform 2 regulates neuronal survival through the mitochondrial fission and fusion balance (By similarity).

### Cellular Location

[Isoform 1]: Cytoplasm. Cytoplasm, cytoskeleton. Membrane

### Tissue Location

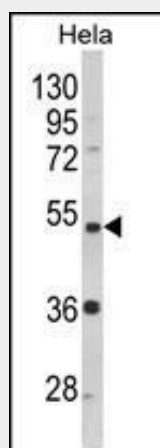
Brain.

## PPP2R2B Antibody (Center) - Protocols

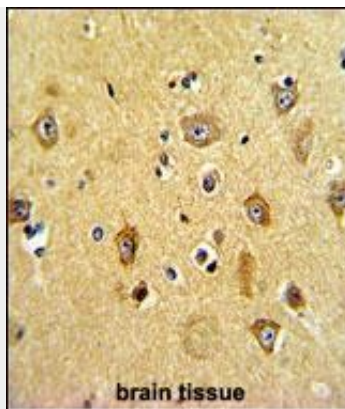
Provided below are standard protocols that you may find useful for product applications.

- [Western Blot](#)
- [Blocking Peptides](#)
- [Dot Blot](#)
- [Immunohistochemistry](#)
- [Immunofluorescence](#)
- [Immunoprecipitation](#)
- [Flow Cytometry](#)
- [Cell Culture](#)

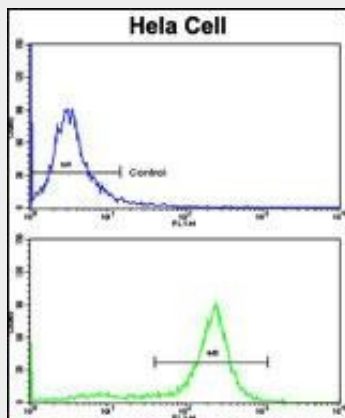
## PPP2R2B Antibody (Center) - Images



Western blot analysis of PPP2R2B Antibody (Center) (Cat. #AP8600c) in HeLa cell line lysates (35ug/lane). PPP2R2B (arrow) was detected using the purified Pab.



Formalin-fixed and paraffin-embedded human brain tissue with PPP2R2B Antibody (Center), which was peroxidase-conjugated to the secondary antibody, followed by DAB staining. This data demonstrates the use of this antibody for immunohistochemistry; clinical relevance has not been evaluated.



Flow cytometric analysis of hela cells using PPP2R2B Antibody (Center)(bottom histogram) compared to a negative control cell (top histogram). FITC-conjugated goat-anti-rabbit secondary antibodies were used for the analysis.

### PPP2R2B Antibody (Center) - Background

PPP2R2B belongs to the phosphatase 2 regulatory subunit B family. Protein phosphatase 2 is one of the four major Ser/Thr phosphatases, and it is implicated in the negative control of cell growth and division. It consists of a common heteromeric core enzyme, which is composed of a catalytic subunit and a constant regulatory subunit, that associates with a variety of regulatory subunits. The B regulatory subunit might modulate substrate selectivity and catalytic activity. This protein is a beta isoform of the regulatory subunit B55 subfamily.

### PPP2R2B Antibody (Center) - References

- Rajkiewicz,M., et.al., Neurol. Neurochir. Pol. 42 (6), 497-504 (2008)
- Ben-Israel,H., et.al., J. Virol. 82 (19), 9381-9388 (2008)
- Strack,S., et.al., J. Comp. Neurol. 392 (4), 515-527 (1998)