

WNT5B Antibody (Center)
Affinity Purified Rabbit Polyclonal Antibody (Pab)
Catalog # AP8603C**Specification**

WNT5B Antibody (Center) - Product Information

Application	FC, IHC-P, WB,E
Primary Accession	Q9H1J7
Other Accession	P33945 , P22726 , P31286 , Q9OXQ7 , Q27Q52 , P22725 , P41221
Reactivity	Human, Mouse
Predicted	Rabbit, Rat, Xenopus
Host	Rabbit
Clonality	Polyclonal
Isotype	Rabbit IgG
Calculated MW	40323
Antigen Region	153-182

WNT5B Antibody (Center) - Additional Information**Gene ID** 81029**Other Names**

Protein Wnt-5b, WNT5B

Target/Specificity

This WNT5B antibody is generated from rabbits immunized with a KLH conjugated synthetic peptide between 153-182 amino acids from the Central region of human WNT5B.

Dilution

FC~~1:10~50

IHC-P~~1:10~50

WB~~1:1000

E~~Use at an assay dependent concentration.

Format

Purified polyclonal antibody supplied in PBS with 0.09% (W/V) sodium azide. This antibody is purified through a protein A column, followed by peptide affinity purification.

Storage

Maintain refrigerated at 2-8°C for up to 2 weeks. For long term storage store at -20°C in small aliquots to prevent freeze-thaw cycles.

Precautions

WNT5B Antibody (Center) is for research use only and not for use in diagnostic or therapeutic procedures.

WNT5B Antibody (Center) - Protein Information

Name WNT5B

Function Ligand for members of the frizzled family of seven transmembrane receptors. Probable developmental protein. May be a signaling molecule which affects the development of discrete regions of tissues. Is likely to signal over only few cell diameters (By similarity).

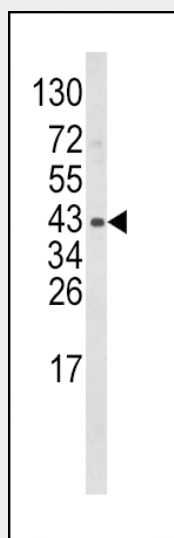
Cellular Location

Secreted, extracellular space, extracellular matrix

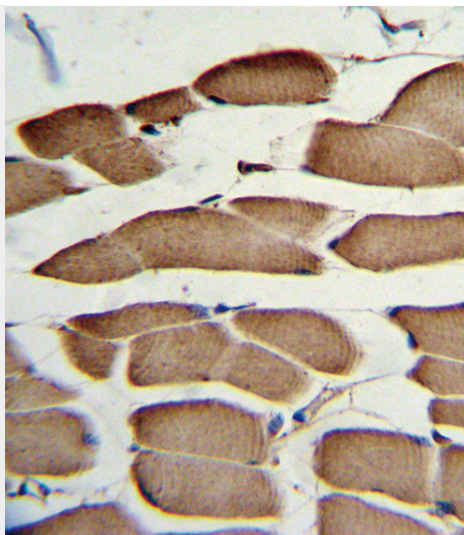
WNT5B Antibody (Center) - Protocols

Provided below are standard protocols that you may find useful for product applications.

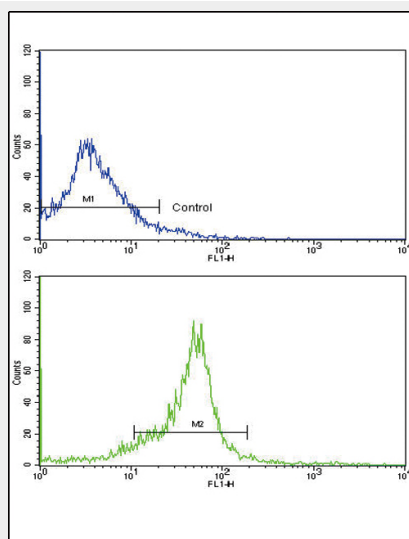
- [Western Blot](#)
- [Blocking Peptides](#)
- [Dot Blot](#)
- [Immunohistochemistry](#)
- [Immunofluorescence](#)
- [Immunoprecipitation](#)
- [Flow Cytometry](#)
- [Cell Culture](#)

WNT5B Antibody (Center) - Images

Western blot analysis of WNT5B Antibody (Center) (Cat. #AP8603c) in mouse bladder tissue lysates (35ug/lane). WNT5B (arrow) was detected using the purified Pab.



Formalin-fixed and paraffin-embedded human skeletal muscle with WNT5B Antibody (Center), which was peroxidase-conjugated to the secondary antibody, followed by DAB staining. This data demonstrates the use of this antibody for immunohistochemistry; clinical relevance has not been evaluated.



Flow cytometric analysis of widr cells using WNT5B Antibody (Center)(bottom histogram) compared to a negative control cell (top histogram). FITC-conjugated goat-anti-rabbit secondary antibodies were used for the analysis.

WNT5B Antibody (Center) - Background

WNT5B is a protein which shows 94% and 80% amino acid identity to the mouse Wnt5b protein and the human WNT5A protein, respectively.

WNT5B Antibody (Center) - References

Saitoh,T. et.al., Int. J. Mol. Med. 10 (3), 345-349 (2002) Yates,K.E. et.al., Osteoarthr. Cartil. 12 (6), 497-505 (2004)