

GMPS Antibody (Center)
Purified Rabbit Polyclonal Antibody (Pab)
Catalog # AP8613C**Specification**

GMPS Antibody (Center) - Product Information

Application	FC, IHC-P, WB,E
Primary Accession	P49915
Other Accession	Q4V7C6 , Q3THK7
Reactivity	Human
Predicted	Mouse, Rat
Host	Rabbit
Clonality	Polyclonal
Isotype	Rabbit IgG
Calculated MW	76715
Antigen Region	296-325

GMPS Antibody (Center) - Additional Information**Gene ID** 8833**Other Names**

GMP synthase [glutamine-hydrolyzing], GMP synthetase, Glutamine amidotransferase, GMPS

Target/Specificity

This GMPS antibody is generated from rabbits immunized with a KLH conjugated synthetic peptide between 296-325 amino acids from the Central region of human GMPS.

Dilution

FC~~1:10~50

IHC-P~~1:10~50

WB~~1:1000

E~~Use at an assay dependent concentration.

Format

Purified polyclonal antibody supplied in PBS with 0.09% (W/V) sodium azide. This antibody is prepared by Saturated Ammonium Sulfate (SAS) precipitation followed by dialysis against PBS.

Storage

Maintain refrigerated at 2-8°C for up to 2 weeks. For long term storage store at -20°C in small aliquots to prevent freeze-thaw cycles.

Precautions

GMPS Antibody (Center) is for research use only and not for use in diagnostic or therapeutic procedures.

GMPS Antibody (Center) - Protein Information

Name GMPS

Function Catalyzes the conversion of xanthine monophosphate (XMP) to GMP in the presence of glutamine and ATP through an adenylyl-XMP intermediate.

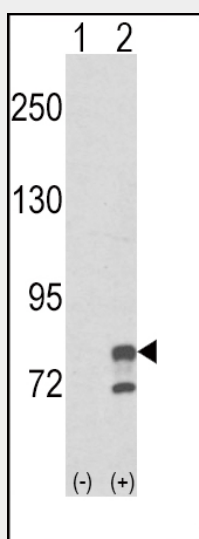
Cellular Location

Cytoplasm, cytosol.

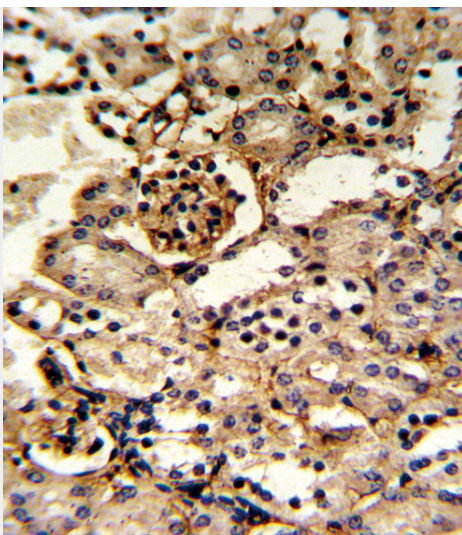
GMPS Antibody (Center) - Protocols

Provided below are standard protocols that you may find useful for product applications.

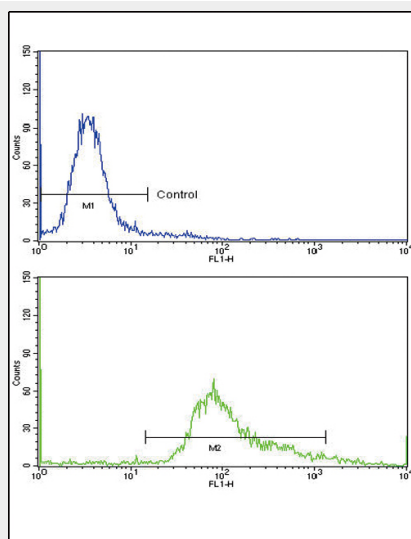
- [Western Blot](#)
- [Blocking Peptides](#)
- [Dot Blot](#)
- [Immunohistochemistry](#)
- [Immunofluorescence](#)
- [Immunoprecipitation](#)
- [Flow Cytometry](#)
- [Cell Culture](#)

GMPS Antibody (Center) - Images

Western blot analysis of GMPS (arrow) using rabbit polyclonal GMPS Antibody (Center) (Cat. #AP8613c). 293 cell lysates (2 ug/lane) either nontransfected (Lane 1) or transiently transfected with the GMPS gene (Lane 2) (Origene Technologies).



Formalin-fixed and paraffin-embedded kidney tissue reacted with GMPS Antibody (Center), which was peroxidase-conjugated to the secondary antibody, followed by DAB staining. This data demonstrates the use of this antibody for immunohistochemistry; clinical relevance has not been evaluated.



Flow cytometric analysis of hela cells using GMPS Antibody (Center)(bottom histogram) compared to a negative control cell (top histogram) FITC-conjugated goat-anti-rabbit secondary antibodies were used for the analysis.

GMPS Antibody (Center) - Background

GMPS is involved in the de novo synthesis of guanine nucleotides which are not only essential for DNA and RNA synthesis, but also provide GTP, which is involved in a number of cellular processes important for cell division.

GMPS Antibody (Center) - References

Nakamura,J., et.al., J. Biol. Chem. 270 (40), 23450-23455 (1995)
Nakamura,J. et.al., J. Biol. Chem. 270 (13), 7347-7353 (1995)