

**HLA-B Antibody (N-term)**  
**Affinity Purified Rabbit Polyclonal Antibody (Pab)**  
**Catalog # AP8616a****Specification**

---

**HLA-B Antibody (N-term) - Product Information**

|                   |   |
|-------------------|---|
| Application       | WB, IHC-P-Leica, FC,E   |
| Primary Accession | <a href="#">P03989</a>  |
| Other Accession   | <a href="#">P30490</a> , <a href="#">P30488</a> , <a href="#">P30487</a> , <a href="#">P30486</a> , <a href="#">P30485</a> ,<br><a href="#">P30483</a> , <a href="#">P30481</a> , <a href="#">P30479</a> , <a href="#">Q04826</a> , <a href="#">P18463</a> ,<br><a href="#">P30464</a> , <a href="#">P30461</a> |
| Reactivity        | Human   |
| Host              | Rabbit  |
| Clonality         | Polyclonal  |
| Isotype           | Rabbit IgG  |
| Antigen Region    | 62-90   |

**HLA-B Antibody (N-term) - Additional Information****Other Names**

HLA class I histocompatibility antigen, B-27 alpha chain, MHC class I antigen B\*27, HLA-B, HLAB

**Target/Specificity**

This HLA-B antibody is generated from rabbits immunized with a KLH conjugated synthetic peptide between 62-90 amino acids from the N-terminal region of human HLA-B.

**Dilution**

WB~~1:1000-2000

IHC-P-Leica~~1:500

FC~~1:25

E~~Use at an assay dependent concentration.

**Format**

Purified polyclonal antibody supplied in PBS with 0.09% (W/V) sodium azide. This antibody is purified through a protein A column, followed by peptide affinity purification.

**Storage**

Maintain refrigerated at 2-8°C for up to 2 weeks. For long term storage store at -20°C in small aliquots to prevent freeze-thaw cycles.

**Precautions**

HLA-B Antibody (N-term) is for research use only and not for use in diagnostic or therapeutic procedures.

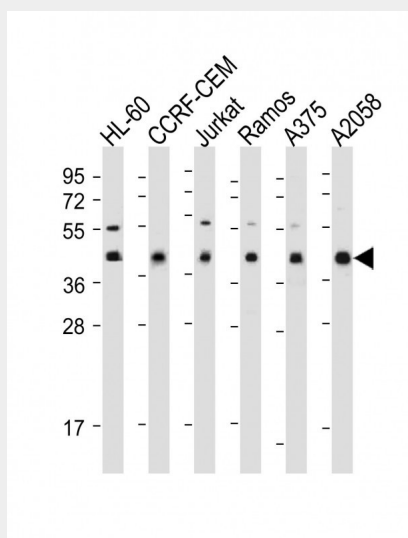
**HLA-B Antibody (N-term) - Protein Information**

## HLA-B Antibody (N-term) - Protocols

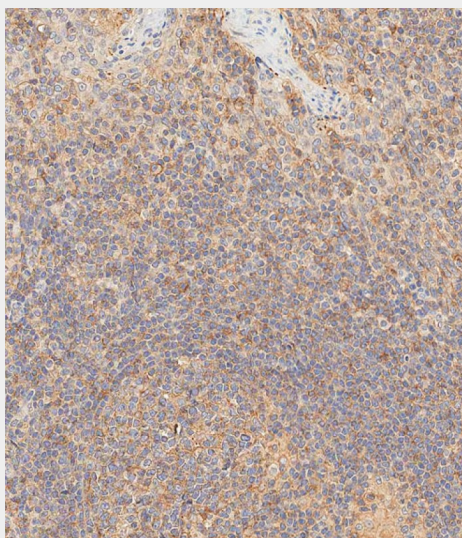
Provided below are standard protocols that you may find useful for product applications.

- [Western Blot](#)
- [Blocking Peptides](#)
- [Dot Blot](#)
- [Immunohistochemistry](#)
- [Immunofluorescence](#)
- [Immunoprecipitation](#)
- [Flow Cytometry](#)
- [Cell Culture](#)

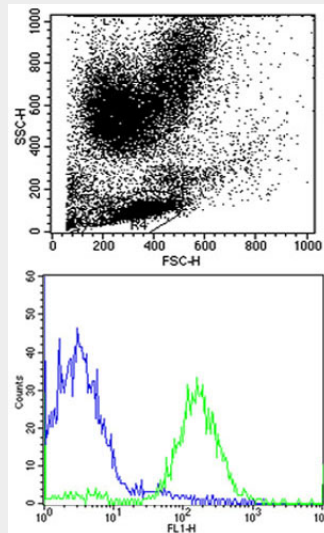
## HLA-B Antibody (N-term) - Images



All lanes : Anti-HLA-B Antibody (N-term) at 1:1000-2000 dilution Lane 1: HL-60 whole cell lysate Lane 2: CCRF-CEM whole cell lysate Lane 3: Jurkat whole cell lysate Lane 4: Ramos whole cell lysate Lane 5: A375 whole cell lysate Lane 6: A2058 whole cell lysate Lysates/proteins at 20 µg per lane. Secondary Goat Anti-Rabbit IgG, (H+L), Peroxidase conjugated at 1/10000 dilution. Predicted band size : 40 kDa Blocking/Dilution buffer: 5% NFDM/TBST.



Immunohistochemical analysis of paraffin-embedded Human tonsil tissue using AP8616a performed on the Leica® BOND RXm. Tissue was fixed with formaldehyde at room temperature, antigen retrieval was by heat mediation with a EDTA buffer (pH9. 0). Samples were incubated with primary antibody(1:500) for 1 hours at room temperature. A undiluted biotinylated CRF Anti-Polyvalent HRP Polymer antibody was used as the secondary antibody.



Flow cytometric analysis of human peripheral blood lymphocytes cells using HLA-B Antibody (N-term) (green, Cat#AP8616a) compared to an isotype control of rabbit IgG (blue). AP8616a was diluted at 1:25 dilution. An Alexa Fluor 488-conjugated goat anti-rabbit IgG at 1:400 dilution was used as the secondary antibody.

#### HLA-B Antibody (N-term) - Background

HLA-B is involved in the presentation of foreign antigens to the immune system.

#### HLA-B Antibody (N-term) - References

- Higgins,C.M., et.al., Ann. Rheum. Dis. 51 (7), 855-862 (1992)
- Guild,B.C.et.al., J. Biol. Chem. 259 (14), 9235-9240 (1984)
- Orr,H.T., et.alt., Biochemistry 18 (25), 5711-5720 (1979)