

**TSHB Antibody (Center)**  
**Affinity Purified Rabbit Polyclonal Antibody (Pab)**  
**Catalog # AP8617c**

**Specification**

---

**TSHB Antibody (Center) - Product Information**

Application	WB, IF, FC, IHC-P,E
Primary Accession	<a href="#">P01222</a>
Other Accession	<a href="#">P12656</a>
Reactivity	Human
Predicted	Mouse
Host	Rabbit
Clonality	Polyclonal
Isotype	Rabbit IgG
Calculated MW	15639
Antigen Region	58-86

**TSHB Antibody (Center) - Additional Information**

**Gene ID** 7252

**Other Names**

Thyrotropin subunit beta, Thyroid-stimulating hormone subunit beta, TSH-B, TSH-beta, Thyrotropin beta chain, Thyrotropin alfa, TSHB

**Target/Specificity**

This TSHB antibody is generated from rabbits immunized with a KLH conjugated synthetic peptide between 58-86 amino acids from the Central region of human TSHB.

**Dilution**

WB~~1:1000  
IF~~1:10~50  
FC~~1:10~50  
IHC-P~~1:50~100  
E~~Use at an assay dependent concentration.

**Format**

Purified polyclonal antibody supplied in PBS with 0.09% (W/V) sodium azide. This antibody is purified through a protein A column, followed by peptide affinity purification.

**Storage**

Maintain refrigerated at 2-8°C for up to 2 weeks. For long term storage store at -20°C in small aliquots to prevent freeze-thaw cycles.

**Precautions**

TSHB Antibody (Center) is for research use only and not for use in diagnostic or therapeutic procedures.

**TSHB Antibody (Center) - Protein Information**

**Name** TSHB

**Function** Indispensable for the control of thyroid structure and metabolism.

**Cellular Location**

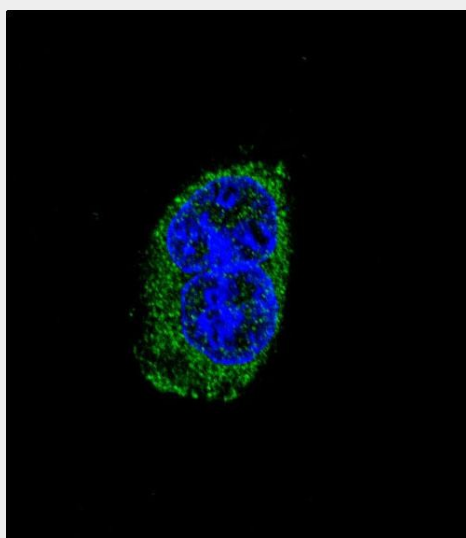
Secreted.

### **TSHB Antibody (Center) - Protocols**

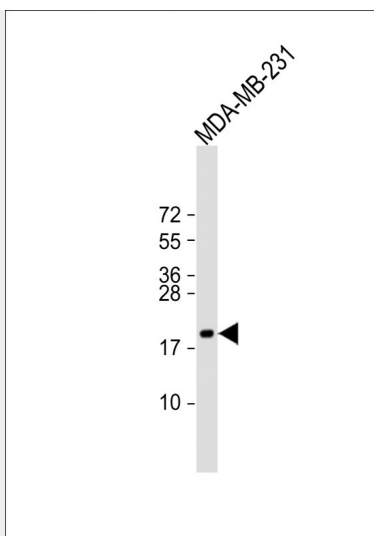
Provided below are standard protocols that you may find useful for product applications.

- [Western Blot](#)
- [Blocking Peptides](#)
- [Dot Blot](#)
- [Immunohistochemistry](#)
- [Immunofluorescence](#)
- [Immunoprecipitation](#)
- [Flow Cytometry](#)
- [Cell Culture](#)

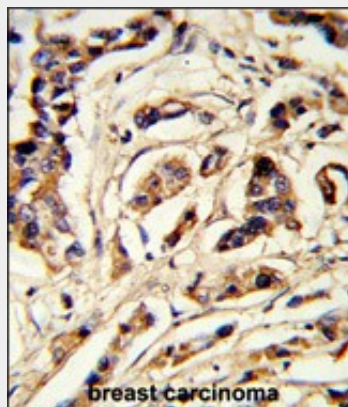
### **TSHB Antibody (Center) - Images**



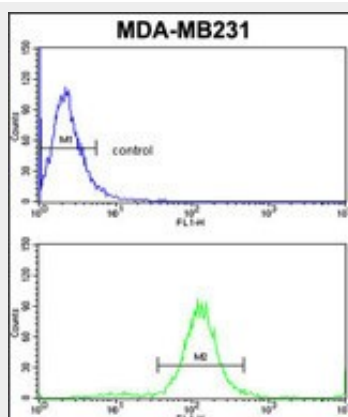
Confocal immunofluorescent analysis of TSHB Antibody (Center)(Cat#AP8617c) with MDA-MB231 cell followed by Alexa Fluor® 488-conjugated goat anti-rabbit IgG (green). DAPI was used to stain the cell nuclear (blue).



Anti-TSHB Antibody (Center) at 1:1000 dilution + MDA-MB-231 whole cell lysate Lysates/proteins at 20 µg per lane. Secondary Goat Anti-Rabbit IgG, (H+L), Peroxidase conjugated at 1/10000 dilution. Predicted band size : 16 kDa Blocking/Dilution buffer: 5% NFDM/TBST.



Formalin-fixed and paraffin-embedded human breast carcinoma reacted with TSHB Antibody (Center), which was peroxidase-conjugated to the secondary antibody, followed by DAB staining. This data demonstrates the use of this antibody for immunohistochemistry; clinical relevance has not been evaluated.



TSHB Antibody (Center) (Cat. #AP8617c) flow cytometric analysis of MDA-MB231 cells (bottom histogram) compared to a negative control cell (top histogram). FITC-conjugated goat-anti-rabbit secondary antibodies were used for the analysis.

#### **TSHB Antibody (Center) - Background**

TSHB is indispensable for the control of thyroid structure and metabolism.