

MPZ Antibody (C-term)
Affinity Purified Rabbit Polyclonal Antibody (Pab)
Catalog # AP8621b

Specification

MPZ Antibody (C-term) - Product Information

Application	WB, IHC-P, FC,E
Primary Accession	P25189
Reactivity	Human
Host	Rabbit
Clonality	Polyclonal
Isotype	Rabbit IgG
Antigen Region	186-215

MPZ Antibody (C-term) - Additional Information

Gene ID 4359

Other Names

Myelin protein P0, Myelin peripheral protein, MPP, Myelin protein zero, MPZ

Target/Specificity

This MPZ antibody is generated from rabbits immunized with a KLH conjugated synthetic peptide between 186-215 amino acids from the C-terminal region of human MPZ.

Dilution

WB~~1:2000
IHC-P~~1:50~100
FC~~1:10~50
E~~Use at an assay dependent concentration.

Format

Purified polyclonal antibody supplied in PBS with 0.09% (W/V) sodium azide. This antibody is purified through a protein A column, followed by peptide affinity purification.

Storage

Maintain refrigerated at 2-8°C for up to 2 weeks. For long term storage store at -20°C in small aliquots to prevent freeze-thaw cycles.

Precautions

MPZ Antibody (C-term) is for research use only and not for use in diagnostic or therapeutic procedures.

MPZ Antibody (C-term) - Protein Information

Name MPZ

Function Is an adhesion molecule necessary for normal myelination in the peripheral nervous

system. It mediates adhesion between adjacent myelin wraps and ultimately drives myelin compaction.

Cellular Location

Cell membrane; Single-pass type I membrane protein

Tissue Location

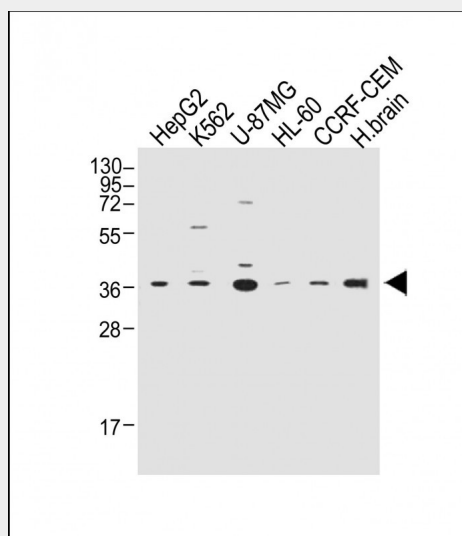
Found only in peripheral nervous system Schwann cells

MPZ Antibody (C-term) - Protocols

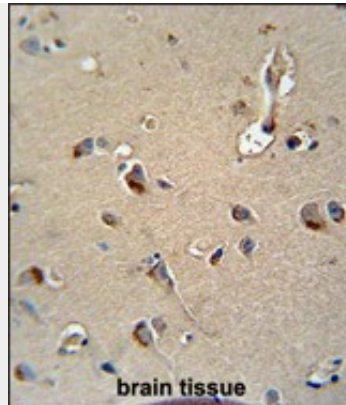
Provided below are standard protocols that you may find useful for product applications.

- [Western Blot](#)
- [Blocking Peptides](#)
- [Dot Blot](#)
- [Immunohistochemistry](#)
- [Immunofluorescence](#)
- [Immunoprecipitation](#)
- [Flow Cytometry](#)
- [Cell Culture](#)

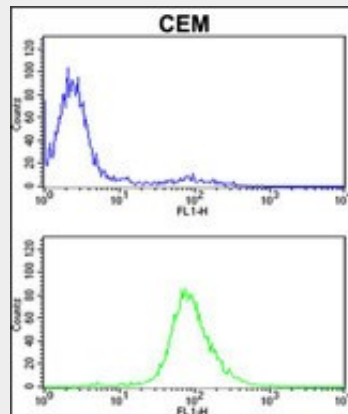
MPZ Antibody (C-term) - Images



All lanes : Anti-MPZ Antibody (C-term) at 1:2000 dilution Lane 1: HepG2 whole cell lysate Lane 2: K562 whole cell lysate Lane 3: U-87MG whole cell lysate Lane 4: HL-60 whole cell lysate Lane 5: CCRF-CEM whole cell lysate Lane 6: Human brain whole tissue lysate Lysates/proteins at 20 µg per lane. Secondary Goat Anti-Rabbit IgG, (H+L), Peroxidase conjugated at 1/2000 dilution. Predicted band size : 28 kDa Blocking/Dilution buffer: 5% NFDM/TBST.



MPZ Antibody (C-term) (Cat. #AP8621b) immunohistochemistry analysis in formalin fixed and paraffin embedded human brain tissue followed by peroxidase conjugation of the secondary antibody and DAB staining. This data demonstrates the use of the MPZ Antibody (C-term) for immunohistochemistry. Clinical relevance has not been evaluated.



MPZ Antibody (C-term) (Cat. #AP8621b) flow cytometric analysis of CEM cells (bottom histogram) compared to a negative control cell (top histogram). FITC-conjugated goat-anti-rabbit secondary antibodies were used for the analysis.

MPZ Antibody (C-term) - Background

MPZ is a major structural protein of peripheral myelin. Creation of an extracellular membrane face which guides the wrapping process and ultimately compacts adjacent lamellae.

MPZ Antibody (C-term) - References

- Tachi, N., et al., Brain Dev. 6 (6), 560-565 (1984)
 Hayasaka, K., et al., Biochem. Biophys. Res. Commun. 180 (2), 515-518 (1991)
 Hayasaka, K., et al., Genomics 17 (3), 755-758 (1993)

MPZ Antibody (C-term) - Citations

- [Number of embryos transferred could possibly be associated with angular pregnancy in in vitro fertilization-embryo transfer](#)