

CAT Antibody (Center)
Affinity Purified Rabbit Polyclonal Antibody (Pab)
Catalog # AP8623c**Specification**

CAT Antibody (Center) - Product Information

Application	FC, IHC-P, WB,E
Primary Accession	P04040
Other Accession	P04762 , O62839 , P24270 , O9PT92 , P00432
Reactivity	Human, Mouse
Predicted	Bovine, Zebrafish, Pig, Rat
Host	Rabbit
Clonality	Polyclonal
Isotype	Rabbit IgG
Antigen Region	152-180

CAT Antibody (Center) - Additional Information**Gene ID** 847**Other Names**

Catalase, CAT

Target/Specificity

This CAT antibody is generated from rabbits immunized with a KLH conjugated synthetic peptide between 152-180 amino acids from the Central region of human CAT.

Dilution

FC~~1:10~50

IHC-P~~1:50~100

WB~~1:2000

E~~Use at an assay dependent concentration.

Format

Purified polyclonal antibody supplied in PBS with 0.09% (W/V) sodium azide. This antibody is purified through a protein A column, followed by peptide affinity purification.

Storage

Maintain refrigerated at 2-8°C for up to 2 weeks. For long term storage store at -20°C in small aliquots to prevent freeze-thaw cycles.

Precautions

CAT Antibody (Center) is for research use only and not for use in diagnostic or therapeutic procedures.

CAT Antibody (Center) - Protein Information**Name** CAT

Function Catalyzes the degradation of hydrogen peroxide (H_2O_2) generated by peroxisomal oxidases to water and oxygen, thereby protecting cells from the toxic effects of hydrogen peroxide (PubMed:[7882369](#)). Promotes growth of cells including T-cells, B-cells, myeloid leukemia cells, melanoma cells, mastocytoma cells and normal and transformed fibroblast cells (PubMed:[7882369](#)).

Cellular Location

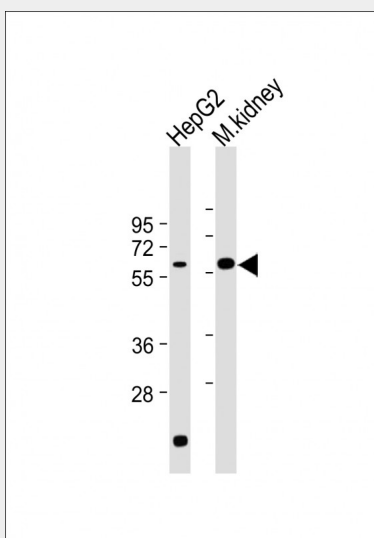
Peroxisome matrix

CAT Antibody (Center) - Protocols

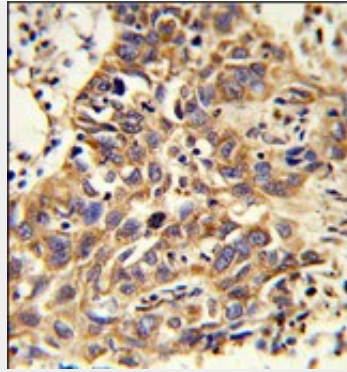
Provided below are standard protocols that you may find useful for product applications.

- [Western Blot](#)
- [Blocking Peptides](#)
- [Dot Blot](#)
- [Immunohistochemistry](#)
- [Immunofluorescence](#)
- [Immunoprecipitation](#)
- [Flow Cytometry](#)
- [Cell Culture](#)

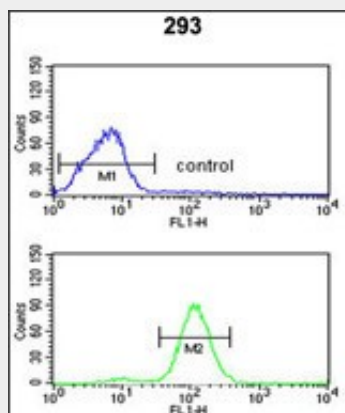
CAT Antibody (Center) - Images



All lanes : Anti-CAT Antibody (Center) at 1:2000 dilution Lane 1: HepG2 whole cell lysate Lane 2: Mouse kidney lysate Lysates/proteins at 20 μ g per lane. Secondary Goat Anti-Rabbit IgG, (H+L), Peroxidase conjugated at 1/10000 dilution. Predicted band size : 60 kDa Blocking/Dilution buffer: 5% NFDM/TBST.



Formalin-fixed and paraffin-embedded human lung carcinoma reacted with CAT Antibody (Center), which was peroxidase-conjugated to the secondary antibody, followed by DAB staining. This data demonstrates the use of this antibody for immunohistochemistry; clinical relevance has not been evaluated.



CAT Antibody (Center) (Cat. #AP8623c) flow cytometric analysis of 293 cells (bottom histogram) compared to a negative control cell (top histogram). FITC-conjugated goat-anti-rabbit secondary antibodies were used for the analysis.

CAT Antibody (Center) - Background

CAT occurs in almost all aerobically respiring organisms and serves to protect cells from the toxic effects of hydrogen peroxide. It promotes growth of cells including T-cells, B-cells, myeloid leukemia cells, melanoma cells, mastocytoma cells and normal and transformed fibroblast cells.

CAT Antibody (Center) - References

Oh, J.H., et.al., Mamm. Genome 16 (12), 942-954 (2005)

CAT Antibody (Center) - Citations

- [Cardiac fatty acid uptake and metabolism in the rat model of polycystic ovary syndrome.](#)
- [The expression and activity of antioxidant enzymes in the liver of rats exposed to high-fructose diet in period from weaning to adulthood.](#)